

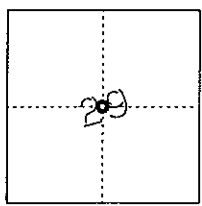
CORNER RECORD

Document Number 51895B

City of \_\_\_\_\_

County of Madera, California

Brief Legal Description \_\_\_\_\_



CORNER TYPE

- Government Corner  Control
- Meander  Property
- Rancho  Other
- Date of Survey \_\_\_\_\_

COORDINATES (OPTIONAL)

N. \_\_\_\_\_  
 E. \_\_\_\_\_  
 Zone \_\_\_\_\_ Datum \_\_\_\_\_  
 Elevation \_\_\_\_\_

CORNER -- Left as found  Found and tagged  Established  Reestablished  Rebuilt

Identification and type of corner found; Evidence used to identify or procedure used to establish or reestablish the corner:  
*Center of Section 29, Township 7 South, Range 20 East, Mount Diablo Base and Meridian:  
 Set monument at intersection of lines connecting established opposing quarter corners of Section 29.*

A description of the physical condition of the monument as found and as set or reset:  
*Set 3/4" iron pipe, up 6" in rock mound, set tag PLS 7061 on September 15, 1994.*

SURVEYOR'S STATEMENT

This Corner Record was prepared by me or under my direction in conformance with the Land Surveyors' Act on September 16, 1994.

Signed Travis Davis PLS 7061



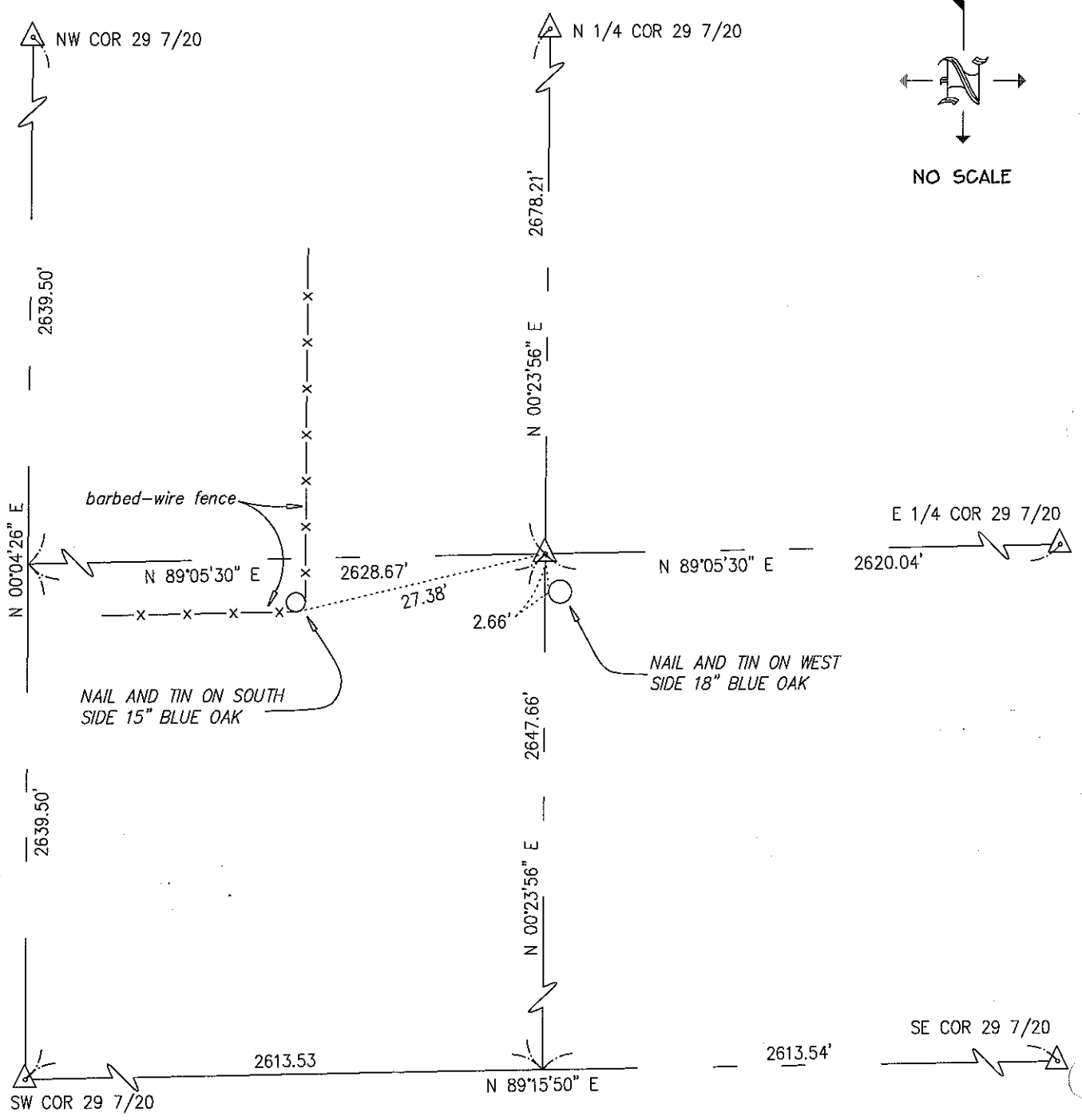
COUNTY SURVEYOR'S STATEMENT

This Corner Record was received 18 MAY 1994<sup>5</sup> and examined and filed 19 MAY 1994<sup>5</sup>.

Signed Mark R. Miller Title ACTING COUNTY SURVEYOR



County Surveyor's Comment: \_\_\_\_\_  
 \_\_\_\_\_  
 \_\_\_\_\_



0720240240