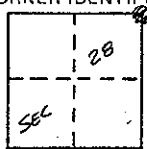


# CORNER RECORD

COUNTY OF MADERA T. 7 S. R. 20 E. M.D.B.E. MERIDIAN CALIFORNIA  
 CORNER TYPE: GOV'T. CORNER  MEANDER  RANCHO  CONTROL  OTHER   
 CORNER IDENTIFICATION - DATE OF VISIT 11-22 19 80



NE. COR. SEC 28 7/20

CORNER - LEFT AS FOUND  FOUND AND TAGGED  REESTABLISHED OBLITERATED CORNER  REBUILT

PHYSICAL DESCRIPTION OF CORNER FOUND; EVIDENCE AND METHOD USED TO IDENTIFY OR REESTABLISH

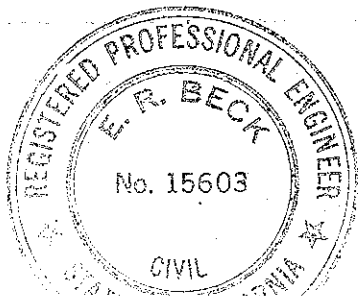
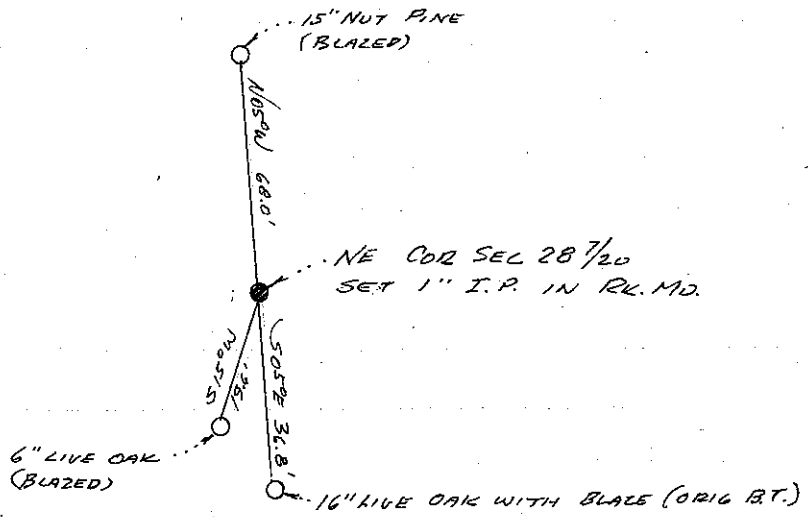
FOUND 16" LIVE OAK WITH BLAZE (ORIG B.T.)

PHYSICAL DESCRIPTION OF MONUMENTS REBUILT OR PERPETUATED

SET 1" IRON PIPE UP 6", TAGGED R.C.E. 15603 IN MD. OF ROCKS. FROM ORIG BT TIES.

CALIFORNIA COORDINATE SYSTEM ORDER: FIRST  SECOND  THIRD   
 STATIONS USED: NGS (USC & GS)  STATE  COUNTY  OTHER  STATION \_\_\_\_\_ STATION \_\_\_\_\_  
 ZONE \_\_\_\_\_ ELEVATION \_\_\_\_\_ NORTHINGS (Y) \_\_\_\_\_ EASTINGS (X) \_\_\_\_\_

SKETCH: (Include reference tie or witness points, remarks and topo of area)



**SURVEYOR'S CERTIFICATE**  
 THIS CORNER RECORD WAS PREPARED BY ME OR UNDER MY DIRECTION IN CONFORMANCE WITH THE LAND SURVEYORS ACT ON 12-16 19 80.  
 SIGNED: E.R. Beck  
 R.C.E. No. 15603

**COUNTY SURVEYOR'S CERTIFICATE**  
 THE CORNER RECORD WAS RECEIVED \_\_\_\_\_ 19 \_\_\_\_\_ AND EXAMINED AND FILED \_\_\_\_\_ 19 \_\_\_\_\_ BY: Barbara Anderson  
 TITLE: \_\_\_\_\_  
 DOCUMENT No. \_\_\_\_\_  
 STATEMENT ON BACK OF SHEET YES  NO

SEAL