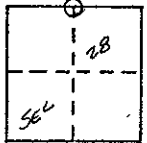


CORNER RECORD

COUNTY OF MADERA T. 7 S. R. 20 E. M.D.B. & MERIDIAN CALIFORNIA

CORNER TYPE: GOV'T. CORNER MEANDER RANCHO CONTROL OTHER

CORNER IDENTIFICATION - DATE OF VISIT 11-22 1980



N 1/4 COR SEC 28 7/20

CORNER - LEFT AS FOUND FOUND AND TAGGED REESTABLISHED OBLITERATED CORNER - REBUILT

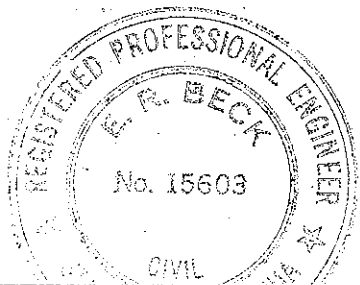
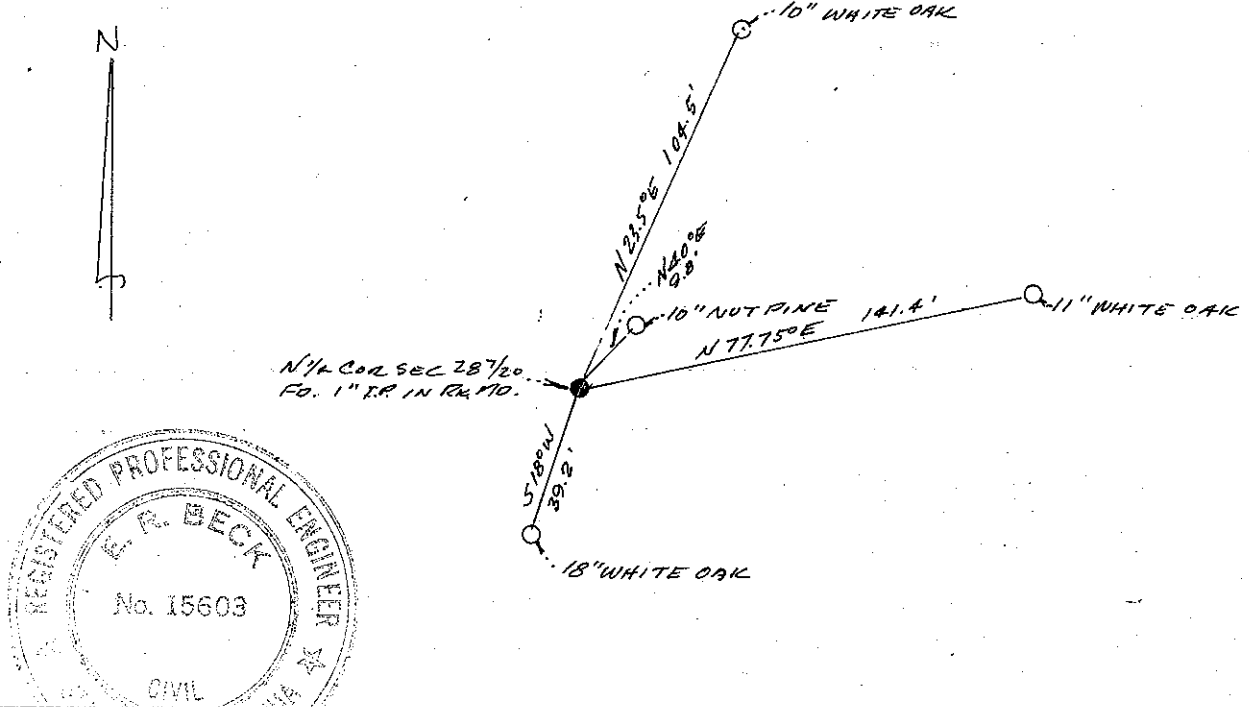
PHYSICAL DESCRIPTION OF CORNER FOUND; EVIDENCE AND METHOD USED TO IDENTIFY OR REESTABLISH

FOUND 1" IRON PIPE TAGGED R.C.E. 5982 IN ROCK MOUND

PHYSICAL DESCRIPTION OF MONUMENTS REBUILT OR PERPETUATED

CALIFORNIA COORDINATE SYSTEM ORDER: FIRST SECOND THIRD
 STATIONS USED: NGS (USC & GS) STATE COUNTY OTHER STATION _____ STATION _____
 ZONE _____ ELEVATION _____ NORTHINGS (Y) _____ EASTINGS (X) _____

SKETCH: (Include reference tie or witness points, remarks and topo of area)



SURVEYOR'S CERTIFICATE
 THIS CORNER RECORD WAS PREPARED BY ME OR UNDER MY DIRECTION IN CONFORMANCE WITH THE LAND SURVEYORS ACT ON 12-16 1980.
 SIGNED: E.R. Beck
 or R.C.E. No.: 15603

COUNTY SURVEYOR'S CERTIFICATE
 THE CORNER RECORD WAS RECEIVED _____ 19____ AND EXAMINED AND FILED _____ 19____ BY: [Signature] TITLE: _____
 DOCUMENT No. _____
 STATEMENT ON BACK OF SHEET YES NO

SEAL