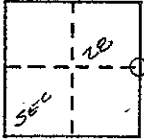


# CORNER RECORD

COUNTY OF MADERA T. 7 S. R. 20 E. M.D.B. & MERIDIAN CALIFORNIA  
 CORNER TYPE: GOV'T. CORNER  MEANDER  RANCHO  CONTROL  OTHER   
 CORNER IDENTIFICATION - DATE OF VISIT 11-22 1980



*E 1/4 COR. SEC 28 7/20*

CORNER - LEFT AS FOUND  FOUND AND TAGGED  REESTABLISHED OBLITERATED CORNER  REBUILT

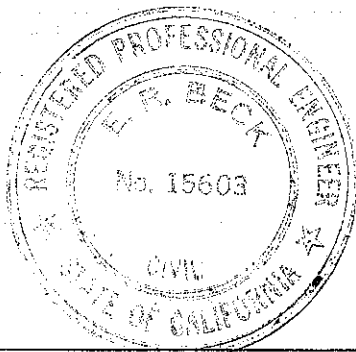
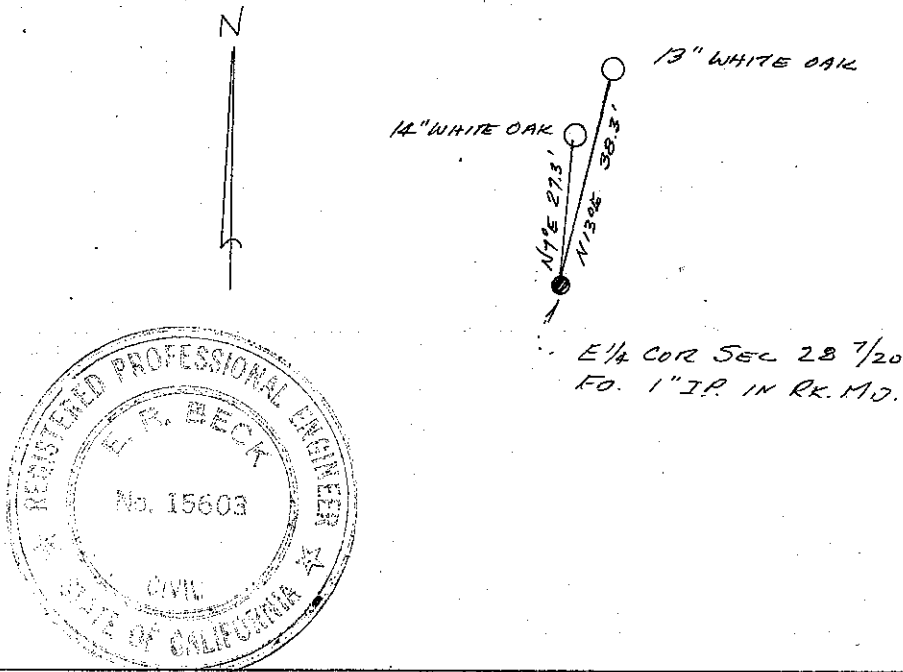
PHYSICAL DESCRIPTION OF CORNER FOUND; EVIDENCE AND METHOD USED TO IDENTIFY OR REESTABLISH

*FOUND 1 1/2" IRON PIPE TAGGED LS 3722 IN ROCK MOUND.*

PHYSICAL DESCRIPTION OF MONUMENTS REBUILT OR PERPETUATED

CALIFORNIA COORDINATE SYSTEM ORDER: FIRST  SECOND  THIRD   
 STATIONS USED: NGS (USC & GS)  STATE  COUNTY  OTHER  STATION \_\_\_\_\_ STATION \_\_\_\_\_  
 ZONE \_\_\_\_\_ ELEVATION \_\_\_\_\_ NORTHINGS (Y) \_\_\_\_\_ EASTINGS (X) \_\_\_\_\_

SKETCH: (Include reference tie or witness points, remarks and topo of area)



**SURVEYOR'S CERTIFICATE**  
 THIS CORNER RECORD WAS PREPARED BY ME OR UNDER MY DIRECTION IN CONFORMANCE WITH THE LAND SURVEYORS ACT ON 12-16 1980.  
 SIGNED: E.R. Beck  
 or R.C.E. No.: 15603  
 SEAL

**COUNTY SURVEYOR'S CERTIFICATE**  
 THE CORNER RECORD WAS RECEIVED \_\_\_\_\_ 19\_\_\_\_ AND EXAMINED AND FILED \_\_\_\_\_ 19\_\_\_\_  
 BY: [Signature]  
 TITLE: \_\_\_\_\_  
 DOCUMENT No. \_\_\_\_\_  
 STATEMENT ON BACK OF SHEET  
 YES  NO