

# CORNER RECORD

COUNTY OF MADERA T. 7 S. R. 20 E M.D.B. 5 MERIDIAN CALIFORNIA

CORNER TYPE: GOV'T. CORNER  MEANDER  RANCHO  CONTROL  OTHER

CORNER IDENTIFICATION - DATE OF VISIT 11-31 1980



*NE. COR. SEC. 27 1/20*

CORNER - LEFT AS FOUND  FOUND AND TAGGED  REESTABLISHED OBLITERATED CORNER  REBUILT

PHYSICAL DESCRIPTION OF CORNER FOUND; EVIDENCE AND METHOD USED TO IDENTIFY OR REESTABLISH

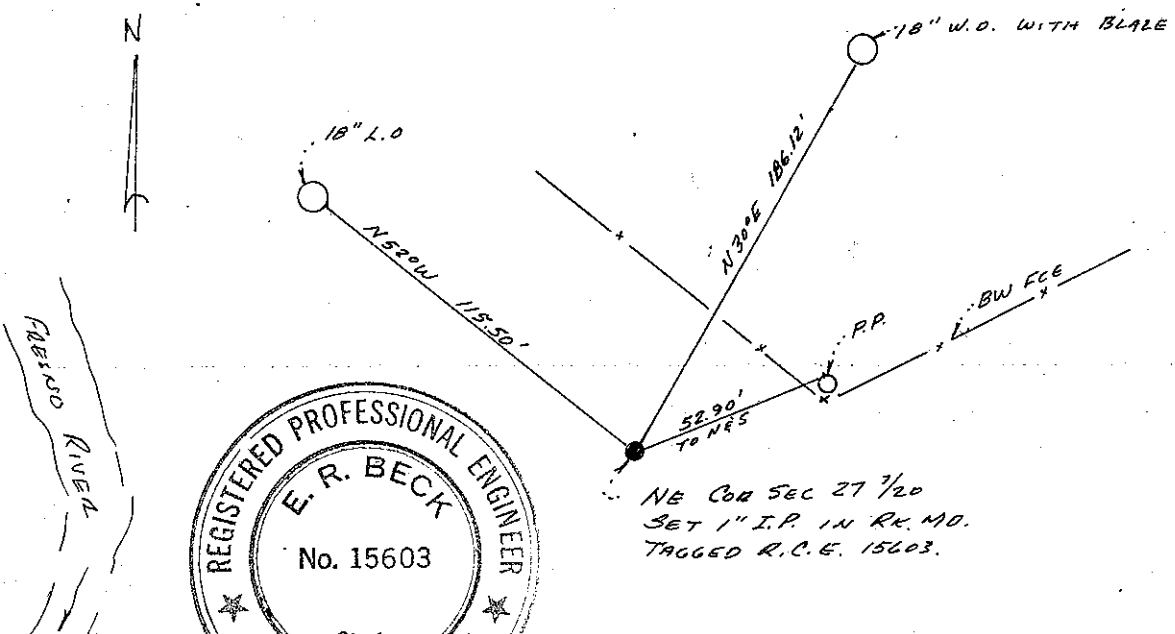
*FOUND 2 ORIG. B.T.S 18" WHITE OAK WITH BLAZE N30°E 186.12'*  
*RESET COR. FROM B.T.S 18" LIVE OAK N52°W 115.50'*

PHYSICAL DESCRIPTION OF MONUMENTS REBUILT OR PERPETUATED

*SET 1" X 30" IRON PIPE UP 6" TAGGED R.C.E. 15603 IN MID. OF ROCKS.*

CALIFORNIA COORDINATE SYSTEM ORDER: FIRST  SECOND  THIRD   
 STATIONS USED: NGS (USC & GSI)  STATE  COUNTY  OTHER  STATION \_\_\_\_\_ STATION \_\_\_\_\_  
 ZONE \_\_\_\_\_ ELEVATION \_\_\_\_\_ NORTHINGS (Y) \_\_\_\_\_ EASTINGS (X) \_\_\_\_\_

SKETCH: (Include reference tie or witness points, remarks and topo of area)



**SURVEYOR'S CERTIFICATE**  
 THIS CORNER RECORD WAS PREPARED BY ME OR UNDER MY DIRECTION IN CONFORMANCE WITH THE LAND SURVEYORS ACT ON 12-16 1980.

SIGNED: E.R. Beck  
 L.S. or R.C.E. No. 15603

SEAL

**COUNTY SURVEYOR'S CERTIFICATE**  
 THE CORNER RECORD WAS RECEIVED \_\_\_\_\_ 19\_\_\_\_\_  
 AND EXAMINED AND FILED \_\_\_\_\_ 19\_\_\_\_\_  
 BY: [Signature]  
 TITLE: \_\_\_\_\_

DOCUMENT No. \_\_\_\_\_

STATEMENT ON BACK OF SHEET

YES  NO