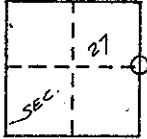


CORNER RECORD

COUNTY OF MADERA T. 7 S. R. 20 E. M.D.B. & MERIDIAN CALIFORNIA

CORNER TYPE: GOV'T. CORNER MEANDER RANCHO CONTROL OTHER

CORNER IDENTIFICATION - DATE OF VISIT 11-30 1980



E 1/4 COR. SEC 27 7/20

CORNER - LEFT AS FOUND FOUND AND TAGGED REESTABLISHED OBLITERATED CORNER REBUILT

PHYSICAL DESCRIPTION OF CORNER FOUND; EVIDENCE AND METHOD USED TO IDENTIFY OR REESTABLISH

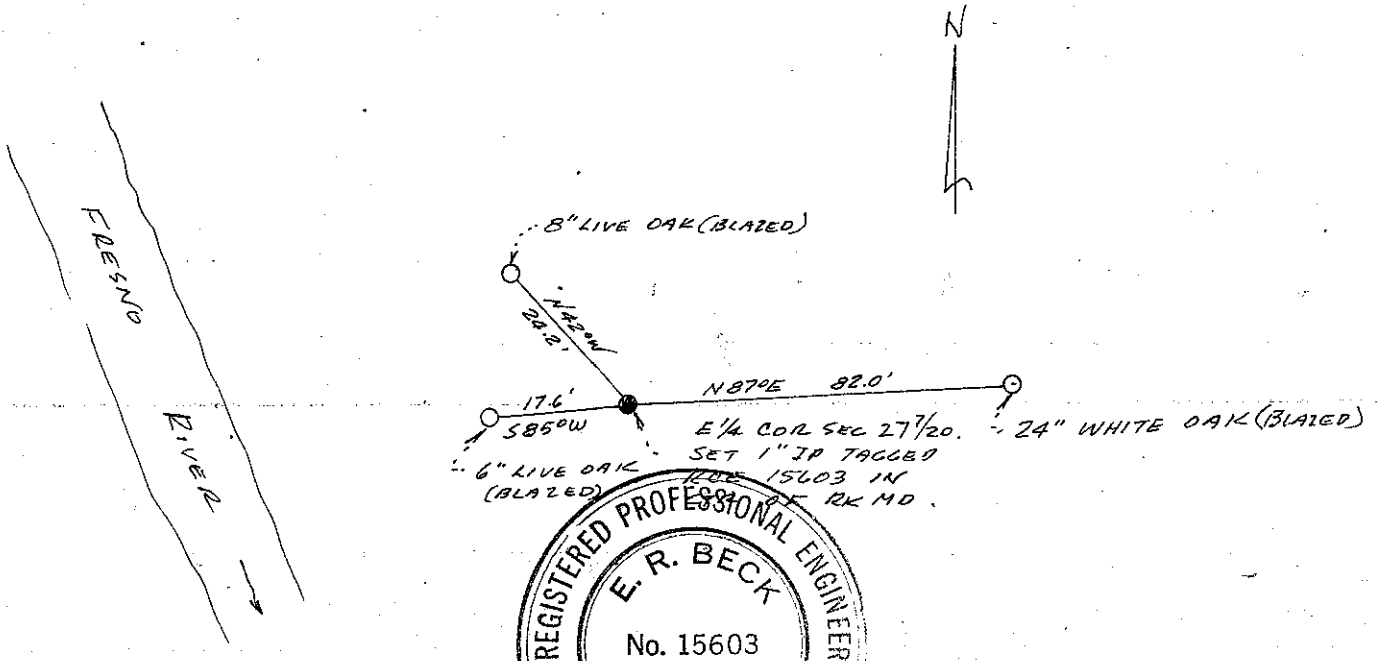
FOUND MOUND OF ROCKS.

PHYSICAL DESCRIPTION OF MONUMENTS REBUILT OR PERPETUATED

SET 1" I.P. IN CTR. OF ROCK MD. WITH R.C.E. 15603 TAG (100 G.)

CALIFORNIA COORDINATE SYSTEM ORDER: FIRST SECOND THIRD
 STATIONS USED: NGS (USC & GS) STATE COUNTY OTHER STATION _____ STATION _____
 ZONE _____ ELEVATION _____ NORTHINGS (Y) _____ EASTINGS (X) _____

SKETCH: (Include reference tie or witness points, remarks and topo of area)



SURVEYOR'S CERTIFICATE
 THIS CORNER RECORD WAS PREPARED BY ME OR UNDER MY DIRECTION IN CONFORMANCE WITH THE LAND SURVEYING ACT ON 12-16 1980.

SIGNED: E.R. Beck
 L.S. or R.C.E. No. 15603

SEAL

COUNTY SURVEYOR'S CERTIFICATE
 THE CORNER RECORD WAS RECEIVED _____ 19____ AND EXAMINED AND FILED _____ 19____ BY: Thomas Anderson
 TITLE: _____

DOCUMENT No. _____

STATEMENT ON BACK OF SHEET

YES NO