

**CORNER RECORD**

COUNTY OF MADERA T. 7 S. R. 20 E. MDM MERIDIAN CALIFORNIA  
 CORNER TYPE: GOVT. CORNER  MEANDER  RANCHO  CONTROL  OTHER  Center Sec. 20  
 CORNER IDENTIFICATION — DATE OF VISIT NOVEMBER 1976



*Cen. Sec.*

CORNER — LEFT AS FOUND  FOUND AND TAGGED  REESTABLISHED OBLITERATED CORNER  REBUILT

PHYSICAL DESCRIPTION OF CORNER FOUND; EVIDENCE AND METHOD USED TO IDENTIFY OR REESTABLISH

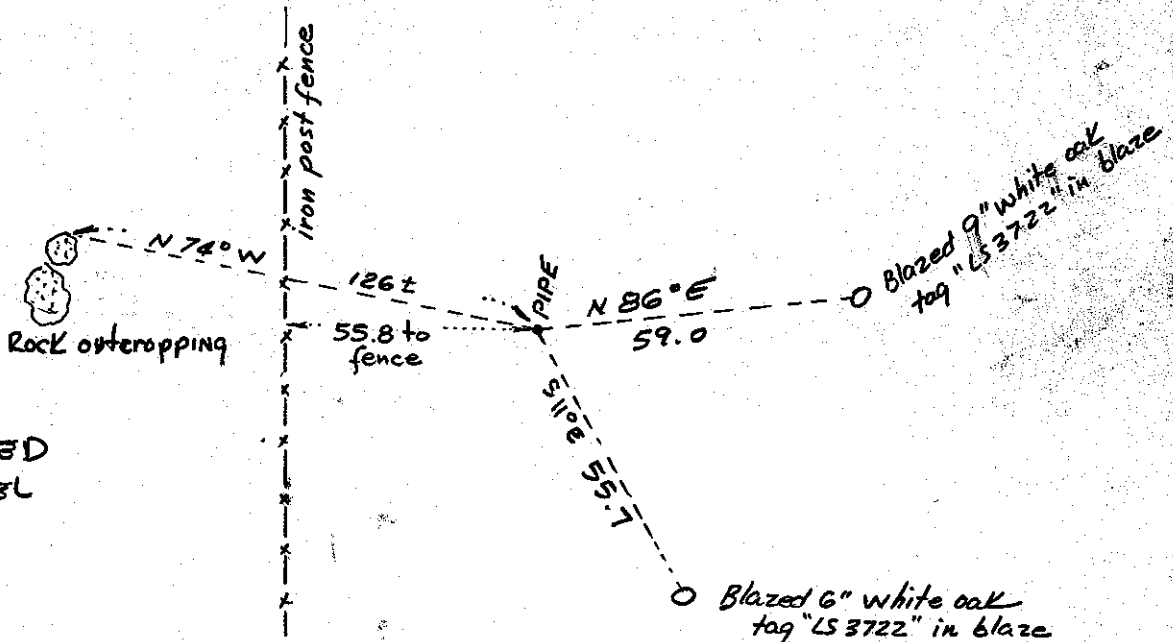
*Found 1/2" pipe and brass tag "LS 3722" in large rock mound.*

PHYSICAL DESCRIPTION OF MONUMENTS REBUILT OR PERPETUATED

*NONE*

CALIFORNIA COORDINATE SYSTEM ORDER: FIRST  SECOND  THIRD   
 STATIONS USED: NCS (USC & GS)  STATE  COUNTY  OTHER  STATION \_\_\_\_\_ STATION \_\_\_\_\_  
 ZONE \_\_\_\_\_ ELEVATION \_\_\_\_\_ NORTHINGS (Y) \_\_\_\_\_ EASTINGS (X) \_\_\_\_\_

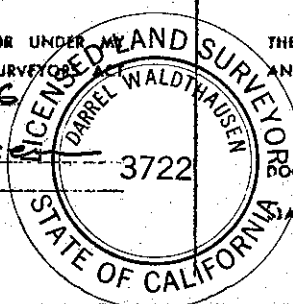
SKETCH: (Include reference tie or witness points, remarks and topo of area)



**ESTABLISHED FOR PARCEL MDP # 986**

**SURVEYOR'S CERTIFICATE**  
 THIS CORNER RECORD WAS PREPARED BY ME OR UNDER MY DIRECTION IN CONFORMANCE WITH THE LAND SURVEYOR ACT ON Nov 23 1976

SIGNED: D. Waldthaus  
 L.S. or R.C.E. No. LS 3722



**COUNTY SURVEYOR'S CERTIFICATE**  
 THE CORNER RECORD WAS RECEIVED Nov 30 1976 AND EXAMINED AND FILED DEC 6 1976 BY: A. Grote TITLE: County Engineer DOCUMENT No. 76-36-62

SEAL

STATEMENT ON BACK OF SHEET

YES

NO