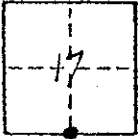


CORNER RECORD

COUNTY OF Madera T. 7 S. R. 20 E. MDM MERIDIAN CALIFORNIA  
CORNER TYPE: GOV'T. CORNER  MEANDER  RANCHO  CONTROL  OTHER   
CORNER IDENTIFICATION — DATE OF VISIT Sept 1976



S  $\frac{1}{4}$  SEC 17

CORNER — LEFT AS FOUND  FOUND AND TAGGED  REESTABLISHED OBLITERATED CORNER  REBUILT

PHYSICAL DESCRIPTION OF CORNER FOUND; EVIDENCE AND METHOD USED TO IDENTIFY OR REESTABLISH

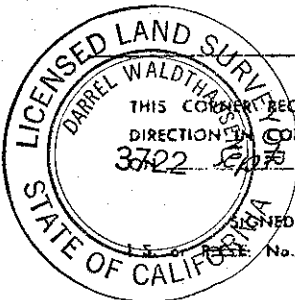
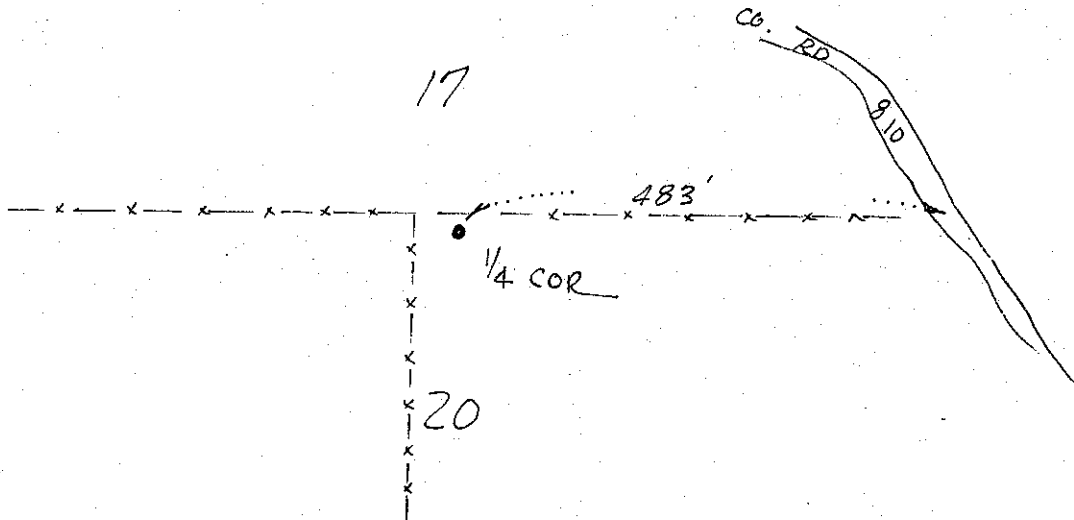
Found 1 1/2" galv pipe with Brass Cap marked for 1/4 cor. and stamped "L.S. 3722" See Parcel Map BK 17 PG. 13, 14, 15, 16

PHYSICAL DESCRIPTION OF MONUMENTS REBUILT OR PERPETUATED

NONE

CALIFORNIA COORDINATE SYSTEM ORDER: FIRST  SECOND  THIRD   
STATIONS USED: NGS (USC & GS)  STATE  COUNTY  OTHER  STATION \_\_\_\_\_ STATION \_\_\_\_\_  
ZONE \_\_\_\_\_ ELEVATION \_\_\_\_\_ NORTHINGS (Y) \_\_\_\_\_ EASTINGS (X) \_\_\_\_\_

SKETCH: (Include reference tie or witness points, remarks and topo of area)



SURVEYOR'S CERTIFICATE  
THIS CORNER RECORD WAS PREPARED BY ME OR UNDER MY DIRECTION IN CONFORMANCE WITH THE LAND SURVEYORS ACT  
3722 Sept 29 1976  
SIGNED: D. Waldthaus  
FILE No: 3722

COUNTY SURVEYOR'S CERTIFICATE  
THE CORNER RECORD WAS RECEIVED 10-4 1976  
AND EXAMINED AND FILED Oct 6 1976  
BY: A. Erste  
TITLE: County Engineer  
DOCUMENT No. 76-29-6

SEAL

STATEMENT ON BACK OF SHEET

YES  NO