

# CORNER RECORD

COUNTY OF Madera T. 7 S R. 20 E MDM MERIDIAN CALIFORNIA  
 CORNER TYPE: GOVT. CORNER  MEANDER  RANCHO  CONTROL  OTHER   
 CORNER IDENTIFICATION — DATE OF VISIT Sept 1976



SECTION 17

CORNER — LEFT AS FOUND  FOUND AND TAGGED  REESTABLISHED OBLITERATED CORNER  REBUILT

PHYSICAL DESCRIPTION OF CORNER FOUND; EVIDENCE AND METHOD USED TO IDENTIFY OR REESTABLISH

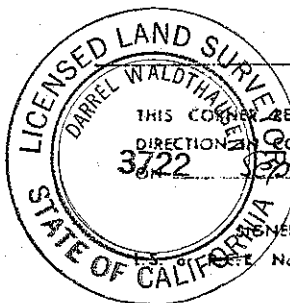
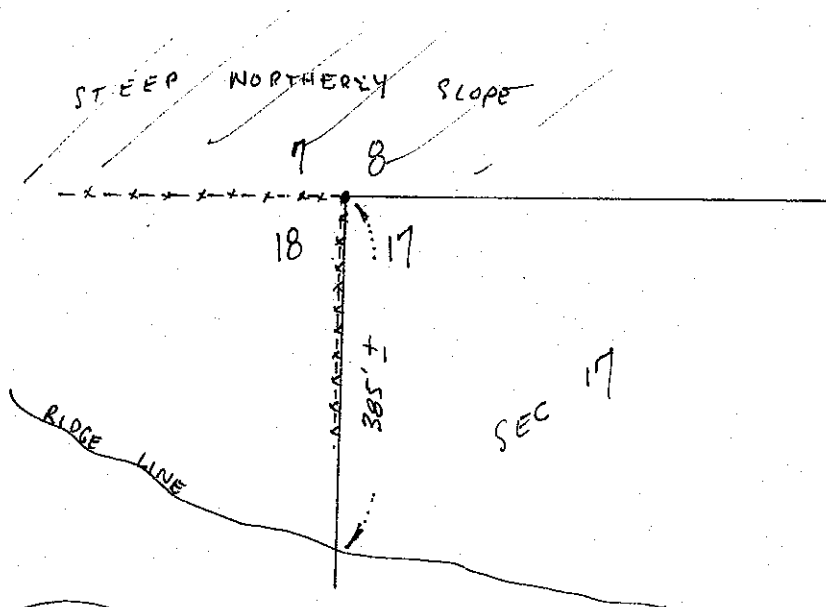
*Found River Stone 3" x 7" x 20" set at fence cor. 385± northerly or ridge called for in Govt. Field Notes of 1874. Also local landowners indicated that this was accepted section cor.  
 ORIG. BEARING TREES NOT FOUND.*

PHYSICAL DESCRIPTION OF MONUMENTS REBUILT OR PERPETUATED

*Set 2 1/2" tagged pipe between stone and fence cor.*

CALIFORNIA COORDINATE SYSTEM ORDER: FIRST  SECOND  THIRD   
 STATIONS USED: NGS (USC & GS)  STATE  COUNTY  OTHER  STATION \_\_\_\_\_ STATION \_\_\_\_\_  
 ZONE \_\_\_\_\_ ELEVATION \_\_\_\_\_ NORTHINGS (Y) \_\_\_\_\_ EASTINGS (X) \_\_\_\_\_

SKETCH: (Include reference tie or witness points, remarks and topo of area)



**SURVEYOR'S CERTIFICATE**

THIS CORNER RECORD WAS PREPARED BY ME OR UNDER MY DIRECTION IN CONFORMANCE WITH THE LAND SURVEYORS ACT  
 No. 3722 Date Sept 29 1976

SIGNED: D. Waldthalem

Exp. No. 3722

SEAL

**COUNTY SURVEYOR'S CERTIFICATE**

THE CORNER RECORD WAS RECEIVED 10-4 1976  
 AND EXAMINED AND FILED Oct 6 1976

BY: A. Grote  
 TITLE: County Engineer

DOCUMENT No. 76-2902

STATEMENT ON BACK OF SHEET

YES  NO