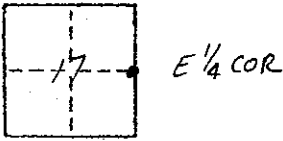


CORNER RECORD

COUNTY OF Madera T. 7 S R. 20 E MDM MERIDIAN CALIFORNIA
 CORNER TYPE: GOVT. CORNER MEANDER RANCHO CONTROL OTHER
 CORNER IDENTIFICATION — DATE OF VISIT Sept 19 76



CORNER — LEFT AS FOUND FOUND AND TAGGED REESTABLISHED OBLITERATED CORNER REBUILT

PHYSICAL DESCRIPTION OF CORNER FOUND; EVIDENCE AND METHOD USED TO IDENTIFY OR REESTABLISH

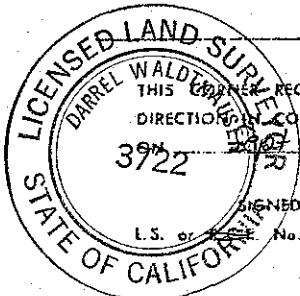
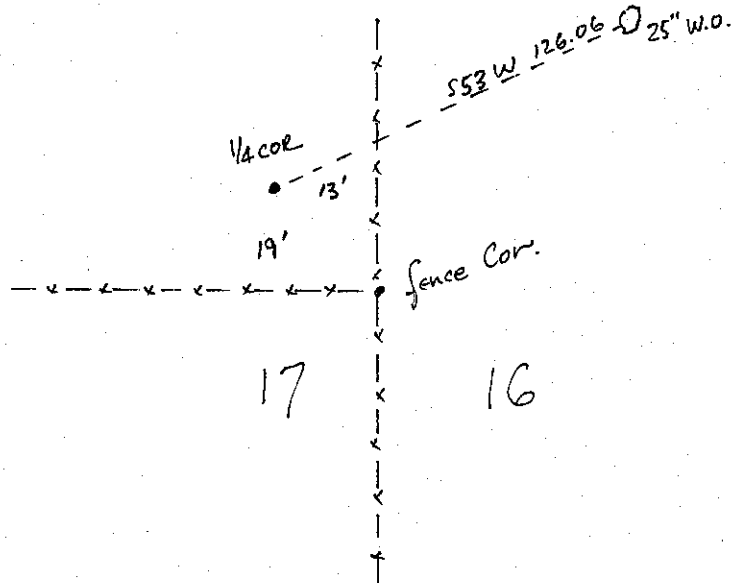
*Found orig Bearing Tree 25" white Oak and re-set 1/4 cor
 S 53° W 126.06 from said tree as per orig govt. field notes (1874)*

PHYSICAL DESCRIPTION OF MONUMENTS REBUILT OR PERPETUATED

*Set 1 1/4" axel shaft 12" up and wired my tag "LS3722" to
 said shaft.*

CALIFORNIA COORDINATE SYSTEM ORDER: FIRST SECOND THIRD
 STATIONS USED: NGS (USC & GS) STATE COUNTY OTHER STATION _____ STATION _____
 ZONE _____ ELEVATION _____ NORTHINGS (N) _____ EASTINGS (E) _____

SKETCH: (Include reference tie or witness points, remarks and topo of area)



SURVEYOR'S CERTIFICATE
 THIS CORNER RECORD WAS PREPARED BY ME OR UNDER MY
 DIRECTION IN CONFORMANCE WITH THE LAND SURVEYORS ACT
 3722 29 19 76
 SIGNED: D. Waldhauer
 L.S. or C.E. No: 3722

COUNTY SURVEYOR'S CERTIFICATE
 THE CORNER RECORD WAS RECEIVED 10-4 19 76
 AND EXAMINED AND FILED Oct 6 19 76
 BY: A. Grote
 TITLE: County Engineer
 DOCUMENT No. 76-29-4

SEAL

STATEMENT ON BACK OF SHEET

YES NO