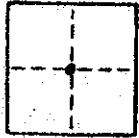


CORNER RECORD

COUNTY OF Modena T. 7 S. R. 20 E. M.D.M. MERIDIAN CALIFORNIA
 CORNER TYPE: GOVT. CORNER MEANDER RANCHO CONTROL OTHER
 CORNER IDENTIFICATION — DATE OF VISIT Sept 19 76



cen $\frac{1}{4}$ Sec 17

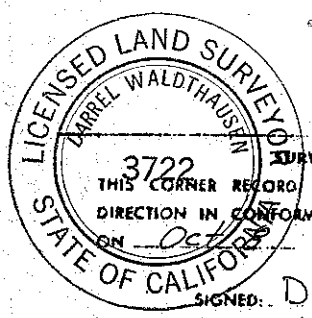
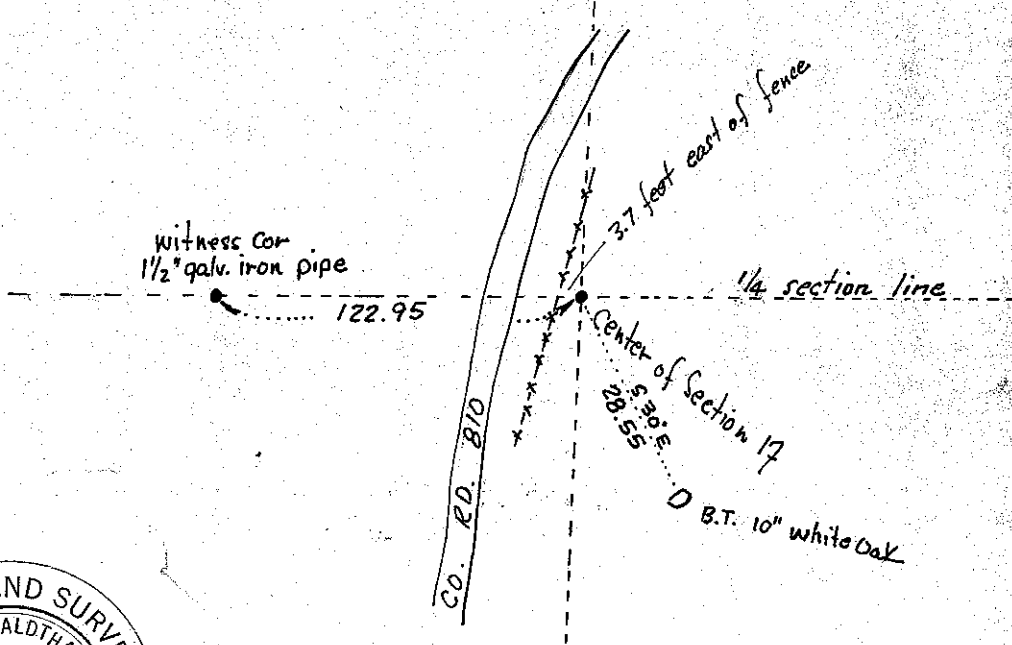
CORNER — LEFT AS FOUND FOUND AND TAGGED REESTABLISHED OBLITERATED CORNER REBUILT
 PHYSICAL DESCRIPTION OF CORNER FOUND; EVIDENCE AND METHOD USED TO IDENTIFY OR REESTABLISH

PHYSICAL DESCRIPTION OF MONUMENTS REBUILT OR PERPETUATED

Set $\frac{1}{4}$ " iron pipe and tag "LS 3722". Built rock mound around pipe

CALIFORNIA COORDINATE SYSTEM ORDER: FIRST SECOND THIRD
 STATIONS USED: NGS (USC & GS) STATE COUNTY OTHER STATION _____ STATION _____
 ZONE _____ ELEVATION _____ NORTHINGS (Y) _____ EASTINGS (X) _____

SKETCH: (Include reference tie or witness points, remarks and topo of area)



SURVEYOR'S CERTIFICATE
 THIS CORNER RECORD WAS PREPARED BY ME OR UNDER MY DIRECTION IN CONFORMANCE WITH THE LAND SURVEYORS ACT ON Oct 12 19 76.
 SIGNED: D. Waldthausen
 L.S. or R.C.E. No.: L.S. 3722

COUNTY SURVEYOR'S CERTIFICATE
 THE CORNER RECORD WAS RECEIVED 10-12 19 76 AND EXAMINED AND FILED Oct 12 19 76.
 BY: A. Grote
 TITLE: County Engineer
 DOCUMENT No. 76-29-9

SEAL

STATEMENT ON BACK OF SHEET: YES NO