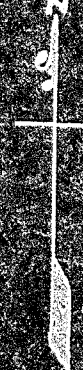


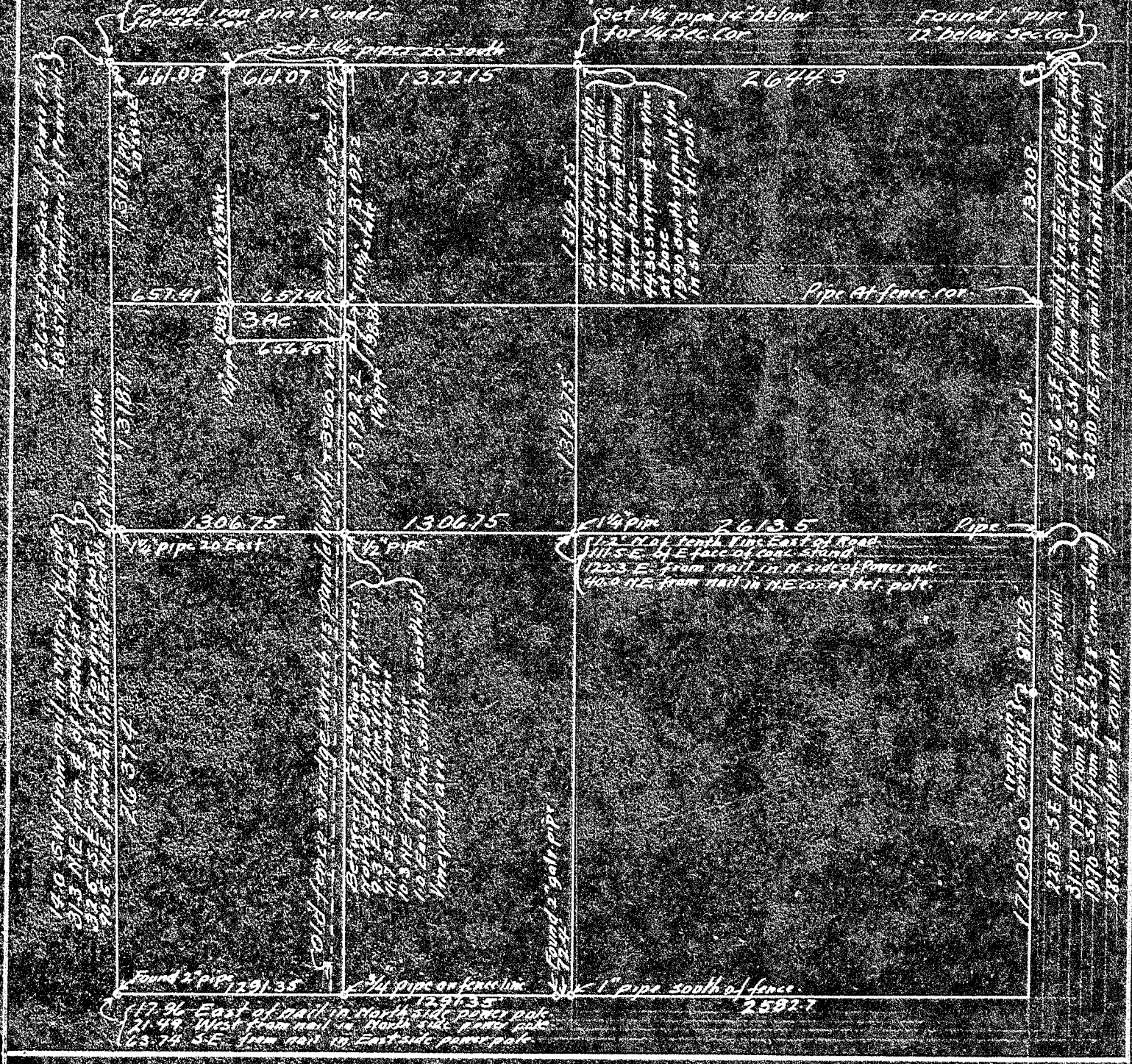
1210.80
822
3786.60

**DIAGRAM OF SURVEY OF
SECTION 34, T.12 S., R.18 E. MD. B. 7M.
FOR HUGHSON-SWETT AND REISS.**
 PREPARED APRIL 1928 BY ROSS SUTHERLAND CIVIL ENGINEER'S

Scale 1 inch = 800 feet



661.05
 661.07
 1322.15
 2644.29



Found 1" pipe 12" below sec. cor.
 Set 1 1/2" pipe 14" below for sec. cor.
 596.25 from trail in E. side of sec. 34
 29.15 from trail in W. side of sec. 34 (from fence post)
 82-80 N.E. from trail in trail E. side of sec. 34
 1710.00 from trail in trail
 3395.35 from face of same strail
 3110.95 from S.E. face of same strail
 1970.50 from face of same strail
 2825.00 from trail

190 SW from trail in trail
 51.5 SE from trail in trail
 20.8 SE from trail in trail
 20.8 SE from trail in trail

1306.75
 1319.15
 1319.15
 1319.15
 1320.8
 1320.8

Found 2" pipe 1291.35
 17.36 East of trail in North side of power pole
 21.49 W.E. from trail in North side of power pole
 63.74 S.E. from trail in East side of power pole

1306.75
 1306.75
 1306.75
 1306.75
 1306.75

1306.75
 1306.75
 1306.75
 1306.75
 1306.75

1306.75
 1306.75
 1306.75
 1306.75
 1306.75

1306.75
 1306.75
 1306.75
 1306.75
 1306.75

1306.75
 1306.75
 1306.75
 1306.75
 1306.75

1306.75
 1306.75
 1306.75
 1306.75
 1306.75

1306.75
 1306.75
 1306.75
 1306.75
 1306.75

1306.75
 1306.75
 1306.75
 1306.75
 1306.75

1306.75
 1306.75
 1306.75
 1306.75
 1306.75

1306.75
 1306.75
 1306.75
 1306.75
 1306.75

1306.75
 1306.75
 1306.75
 1306.75
 1306.75

1306.75
 1306.75
 1306.75
 1306.75
 1306.75

1306.75
 1306.75
 1306.75
 1306.75
 1306.75

1306.75
 1306.75
 1306.75
 1306.75
 1306.75

1306.75
 1306.75
 1306.75
 1306.75
 1306.75