

# MIDVALE ADDITION

A RESUBDIVISION IN LOTS 5 & 6 MIDVALE COLONY

MADERA COUNTY

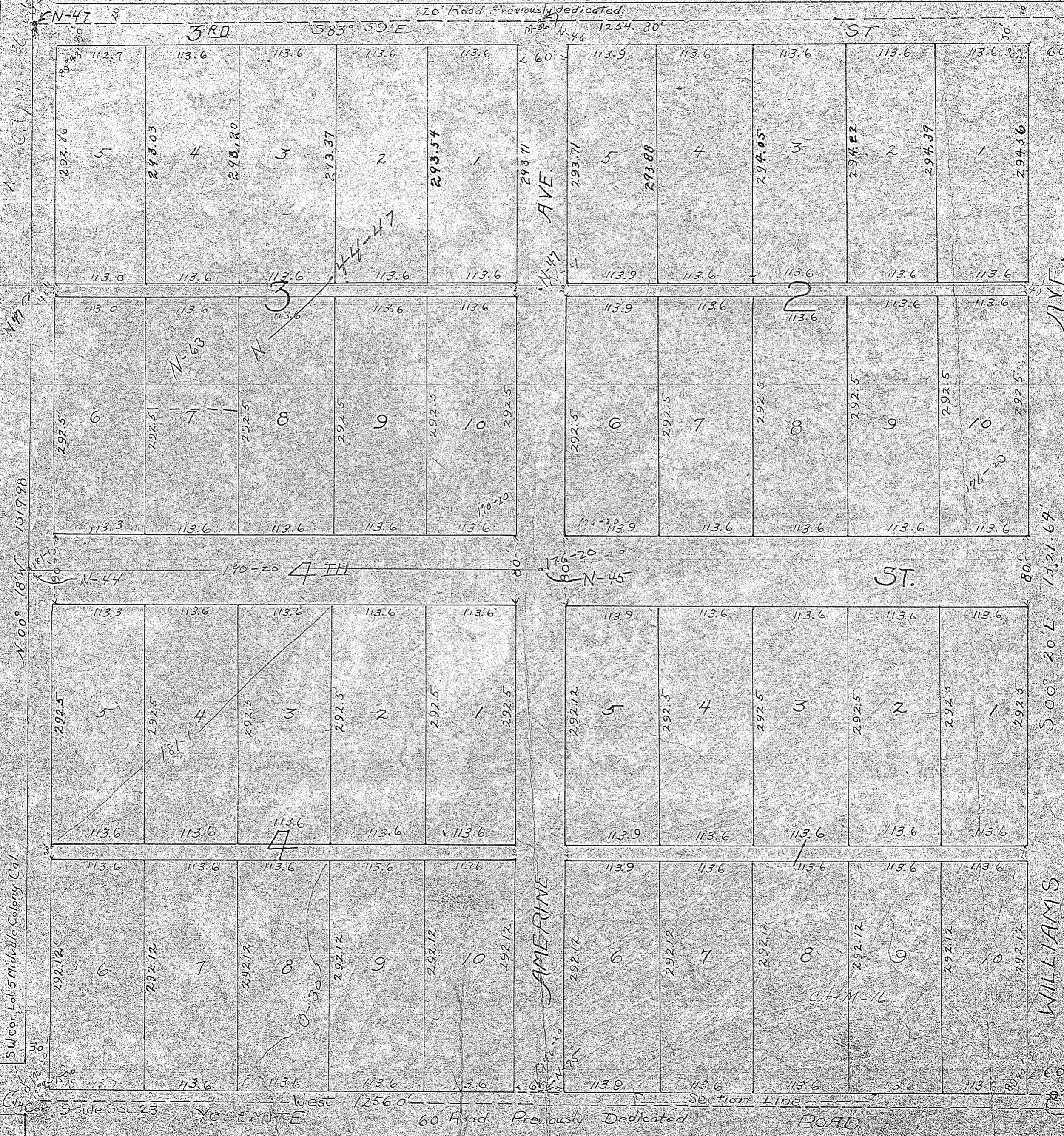
SCALE 1" = 100'

Approved by the Board of Trustees of the City of Madera  
and Recommended to the Board of Supervisors of  
Madera County California for acceptance.

Done this Dec 23 1929

Attest Jan M. Maguire President of Madera City  
Clerk Board of Trustees

S.W. cor of Resub. of Lots  
1-2-3-4 Midvale Colony



S.W. cor. Lot 5 Midvale Colony Cal. N 00° 18' W 1319.98'

East Line Lot 56 Midvale Colony N 00° 20' E 1321.69'

1/4 Cor. S side Sec. 23 West 1256.0' Section Line 60' Road Previously Dedicated ROAD