

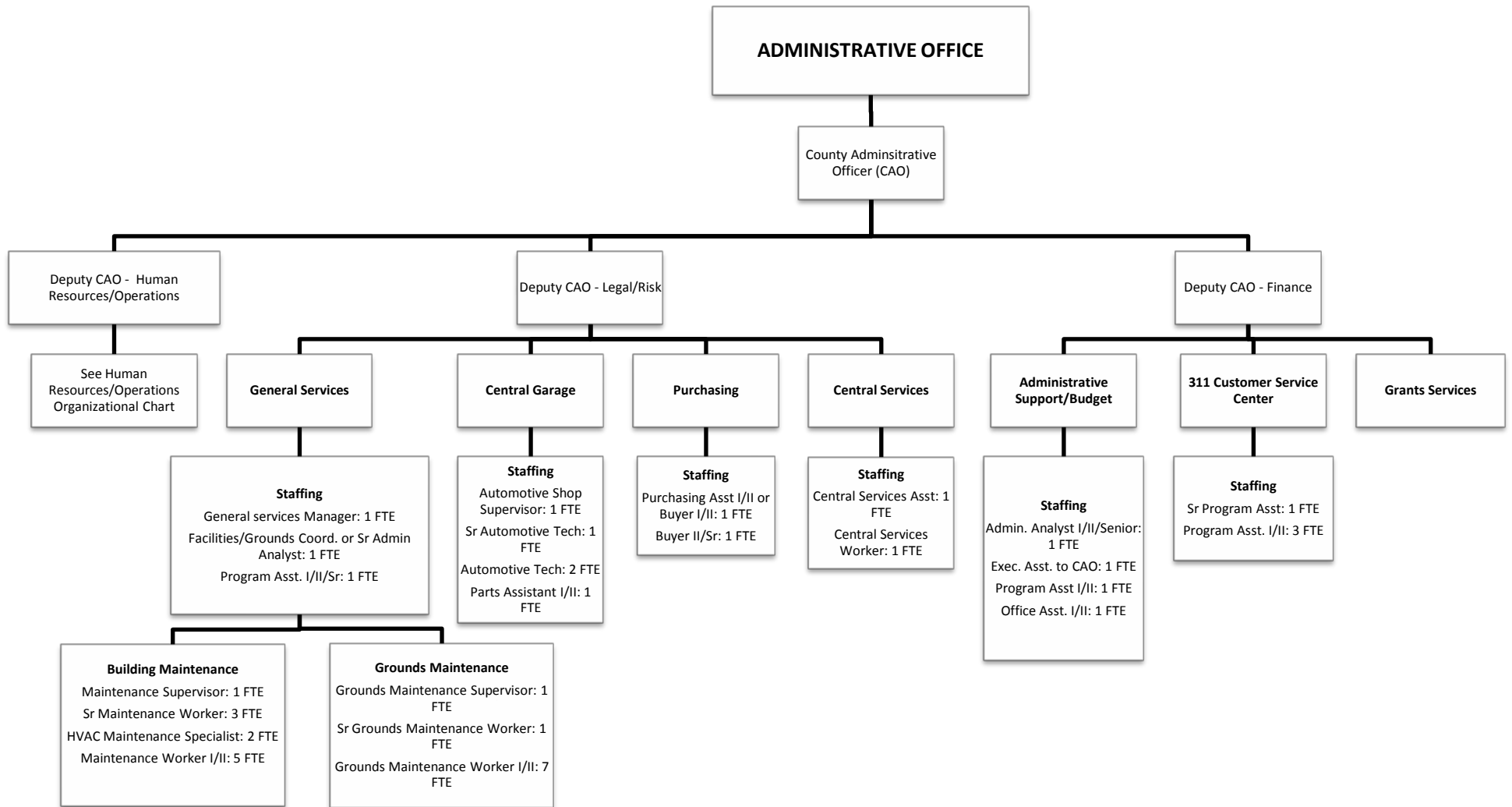


DEPARTMENTAL ORGANIZATIONAL CHARTS

The Departmental Organizational Charts contained in this document reflect the 2017-18 Recommended staffing allocations, inclusive of funded and unfunded positions, and are shown by assignment within the functional areas or programs of the department. These charts are intended to only provide an overview of the department and its functions/ programs and how those areas are staffed.

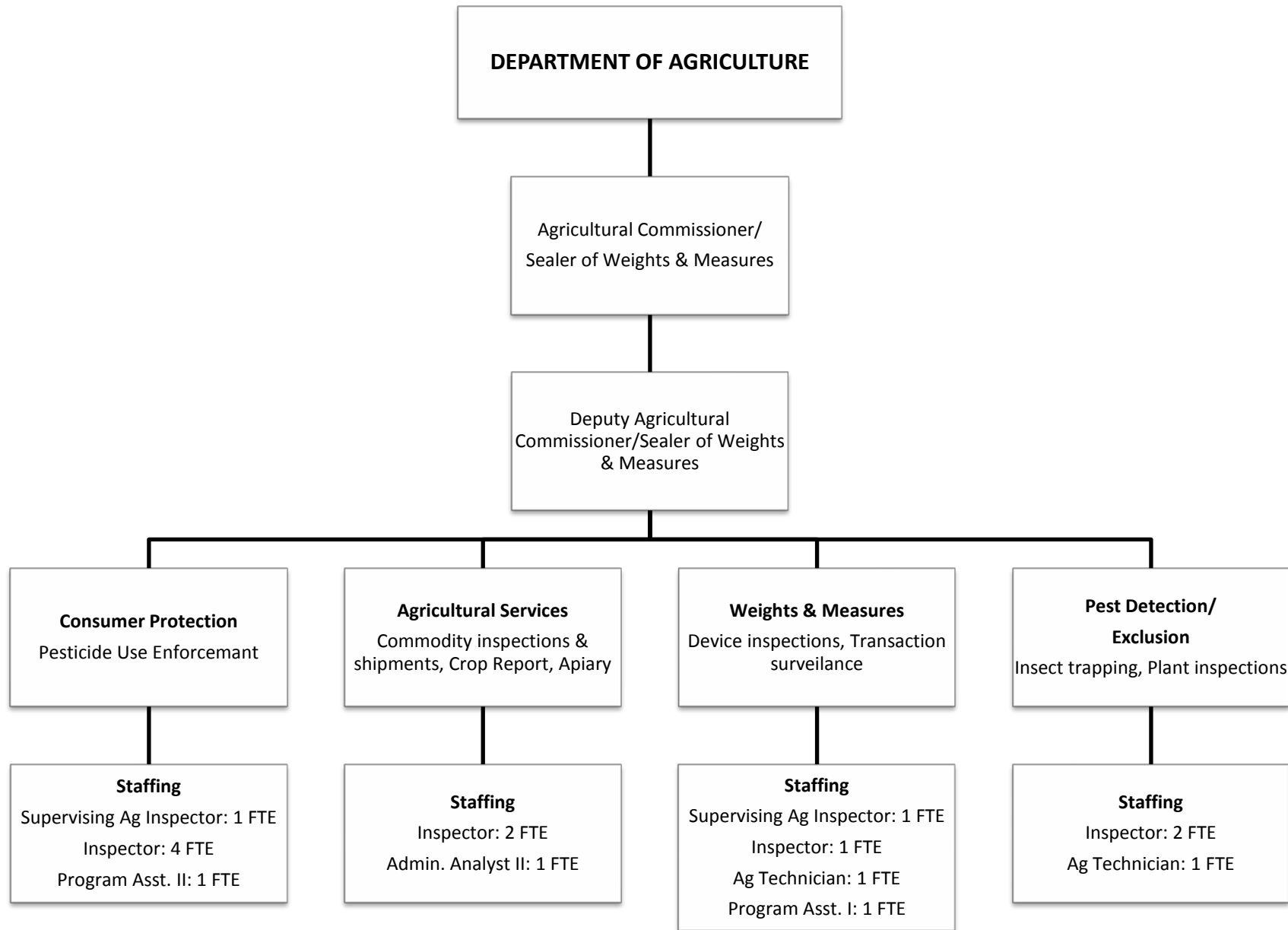
For more information on funded and unfunded positions, please refer to the specific departmental budget narrative.

Note: Organizational charts are presented in alphabetical order by department.

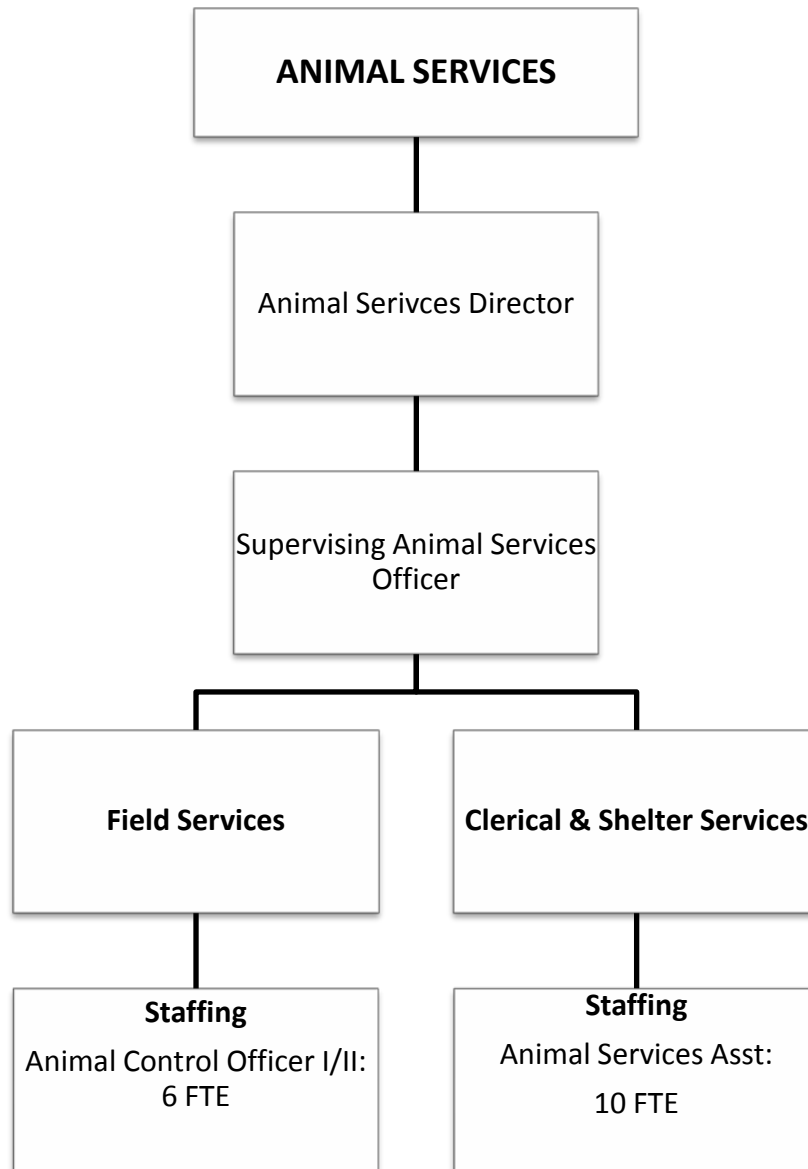


Total FTE: 42

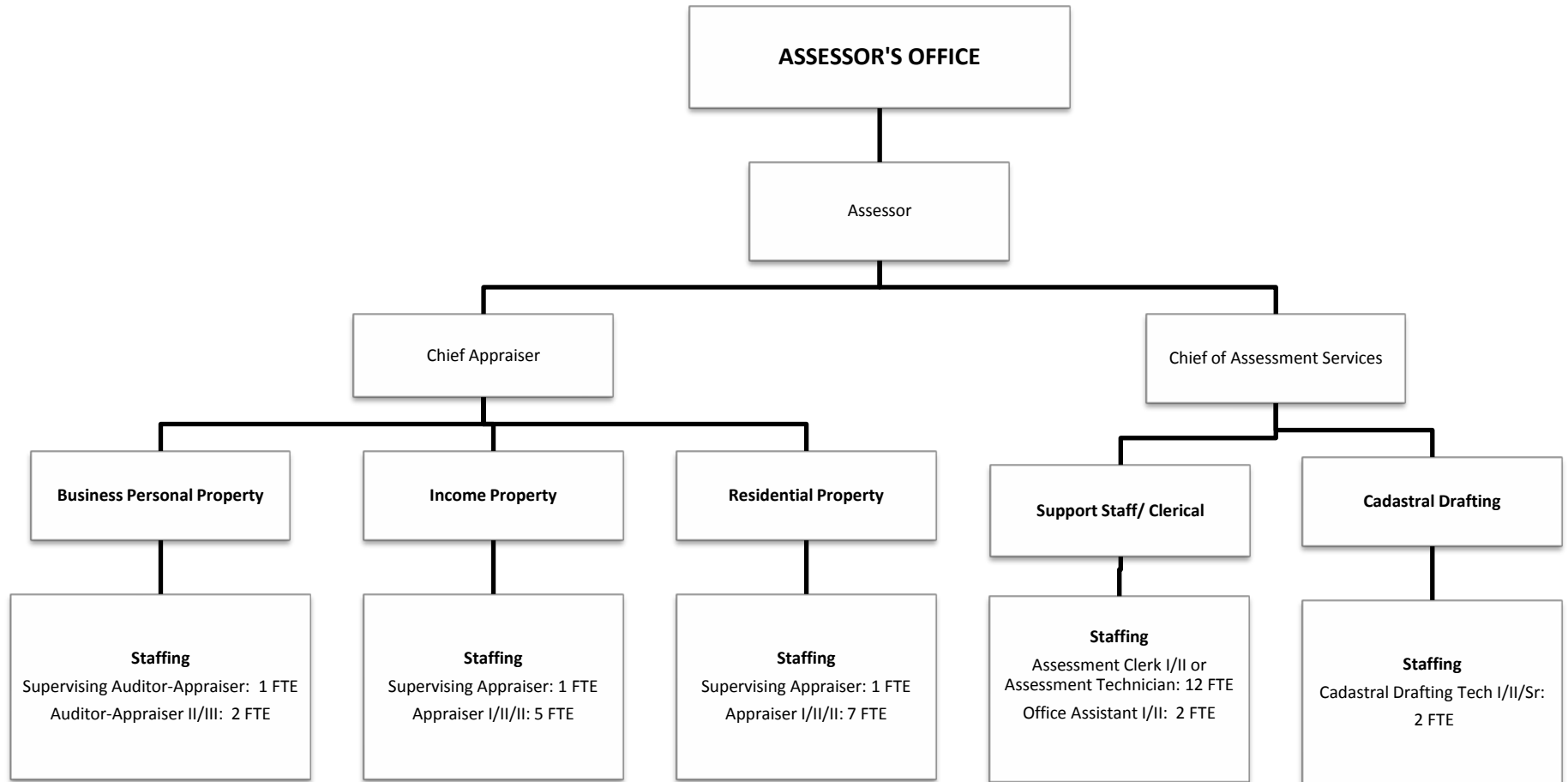
Note: Total FTE does not include staffing reflected on Human Resources/Operations Organizational Chart



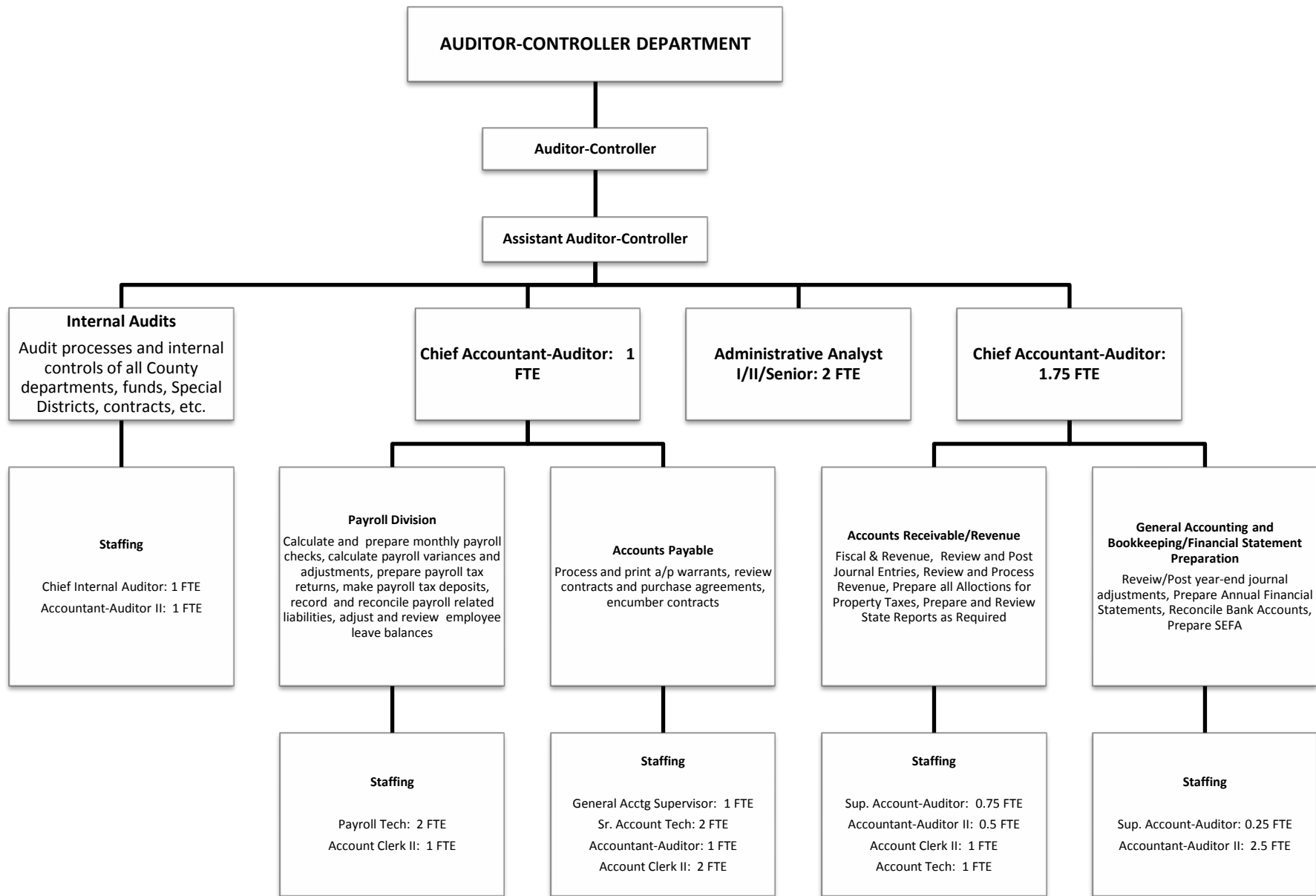
Total FTE: 18



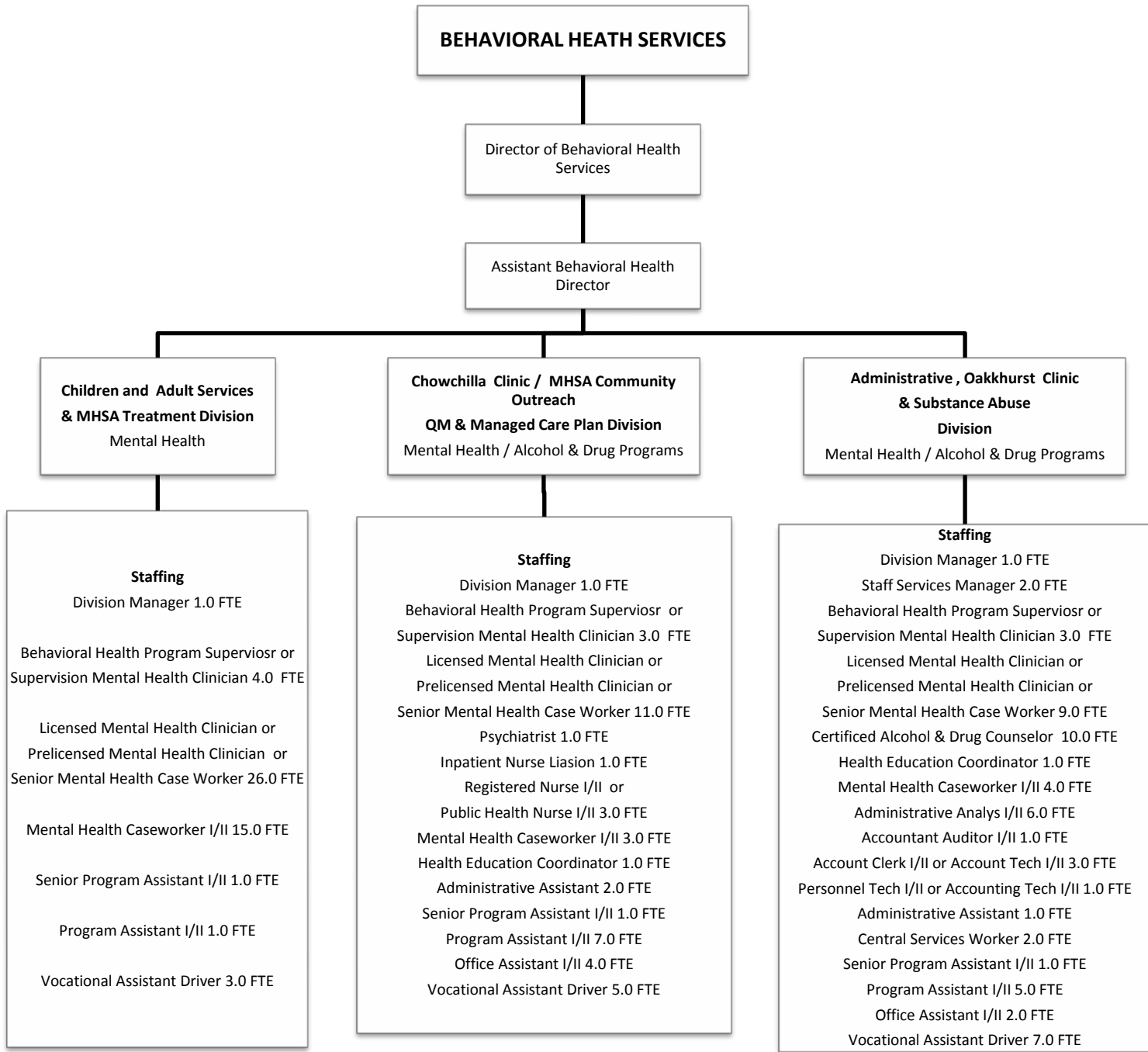
Total FTE: 18



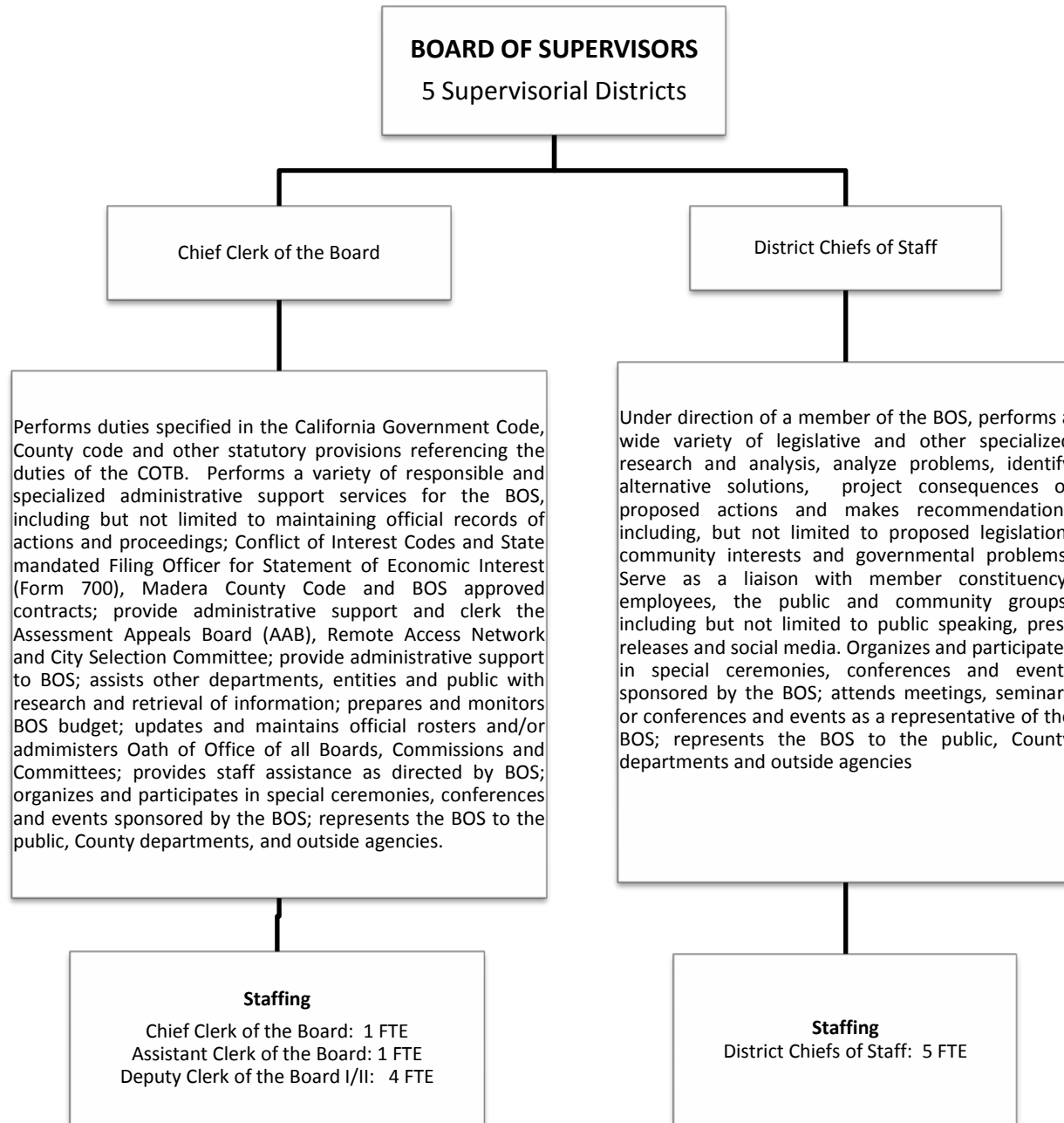
Total FTE: 36



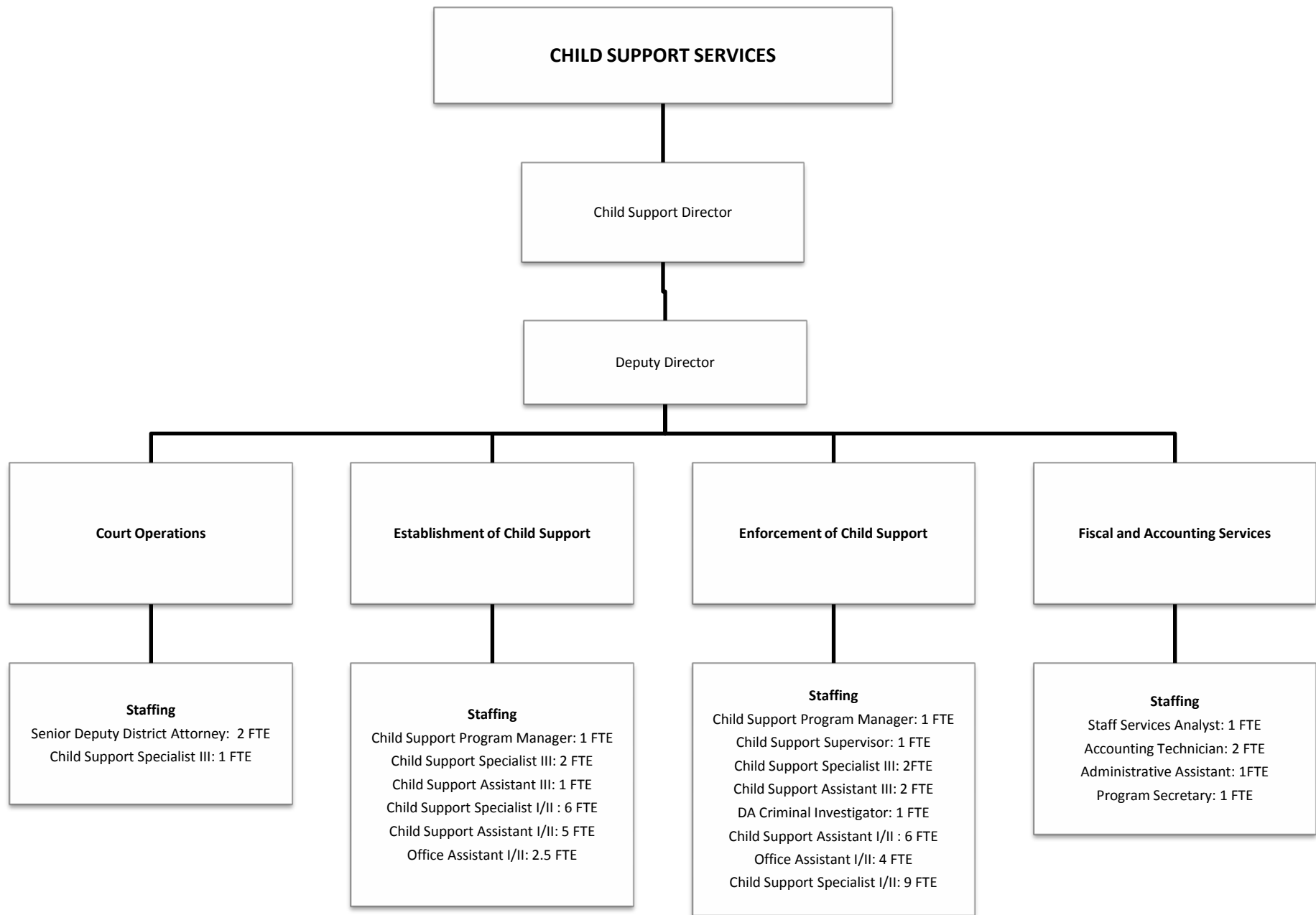
Total FTE: 23.75



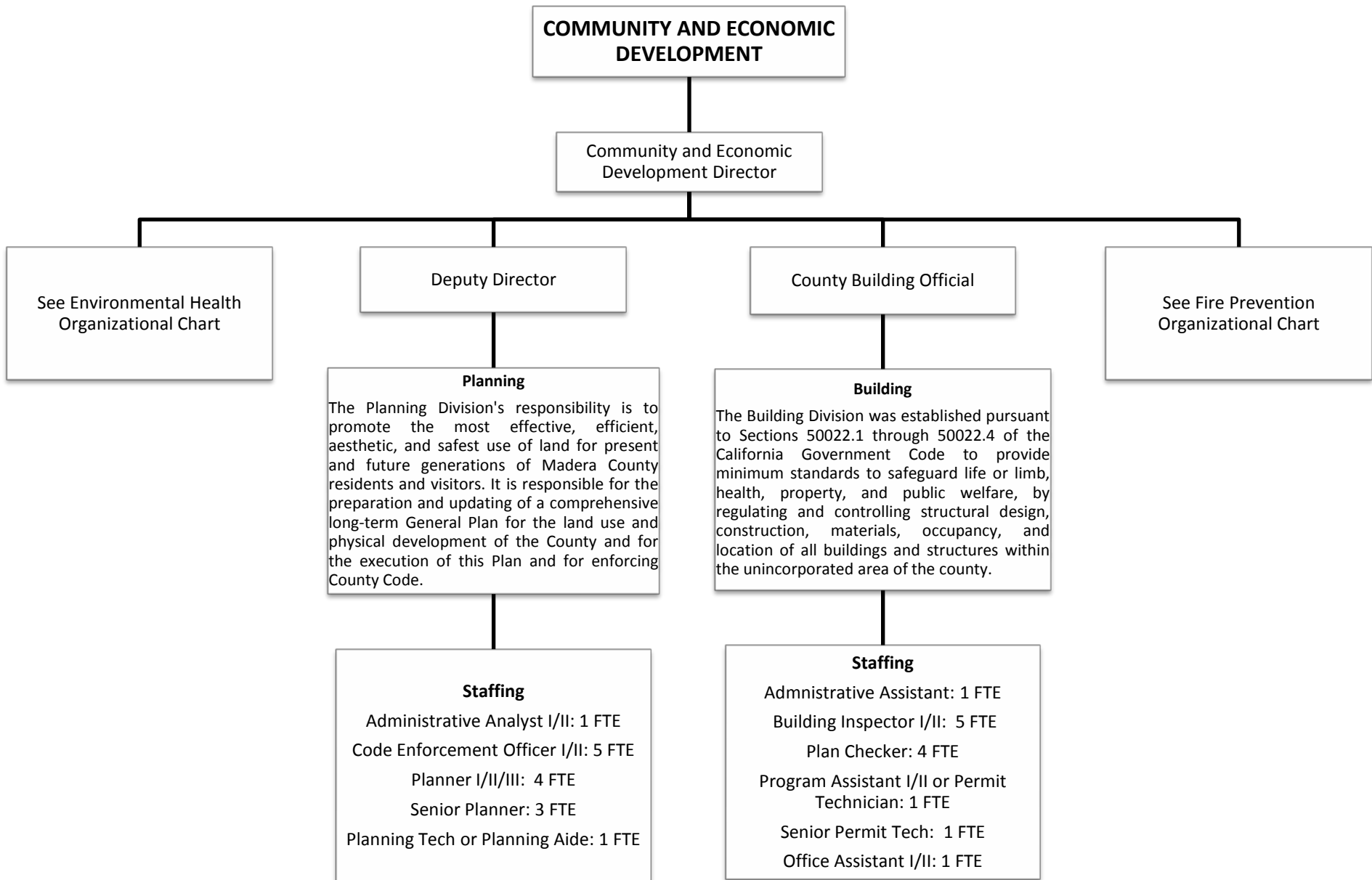
Total FTE: 155



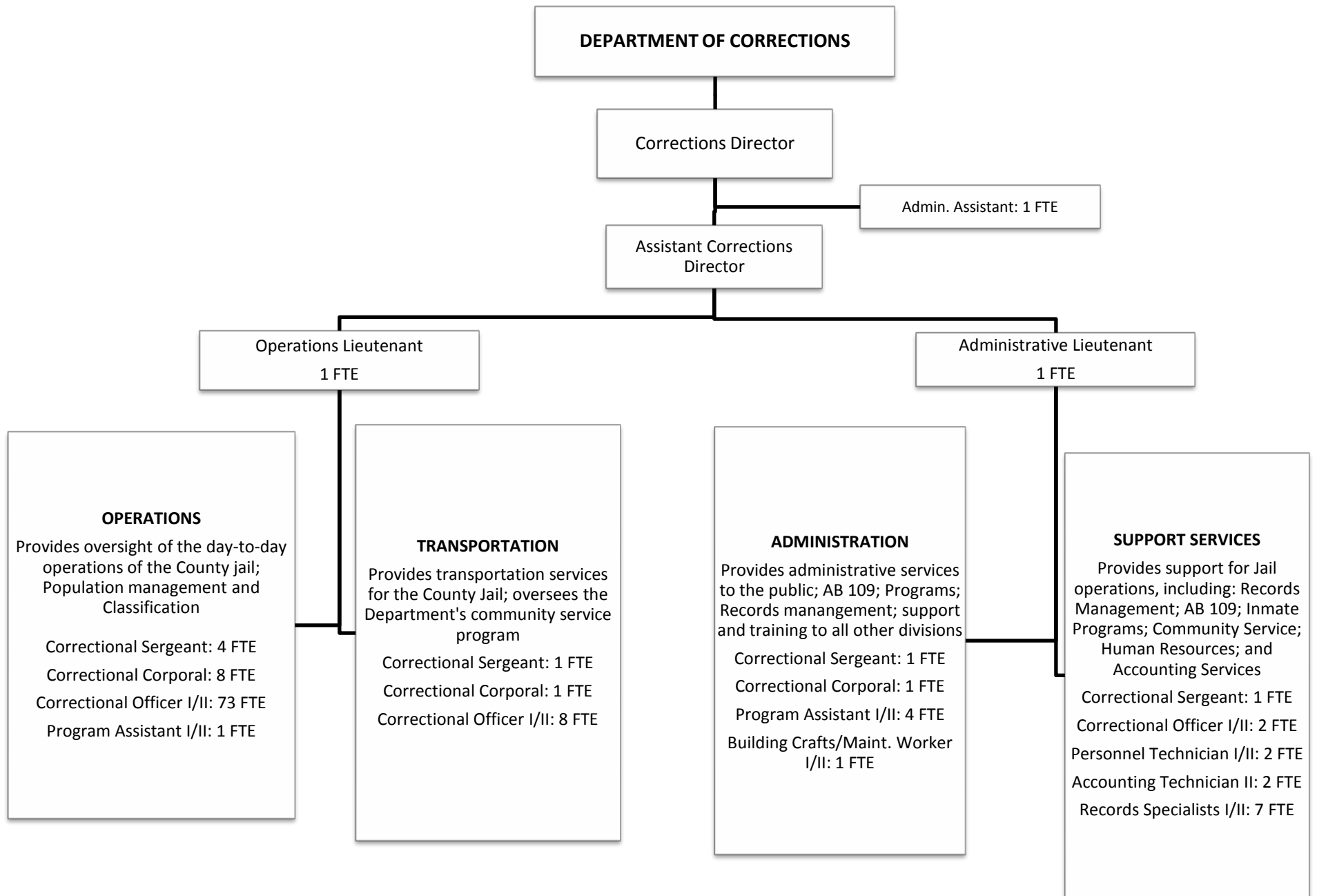
Total FTE: 16



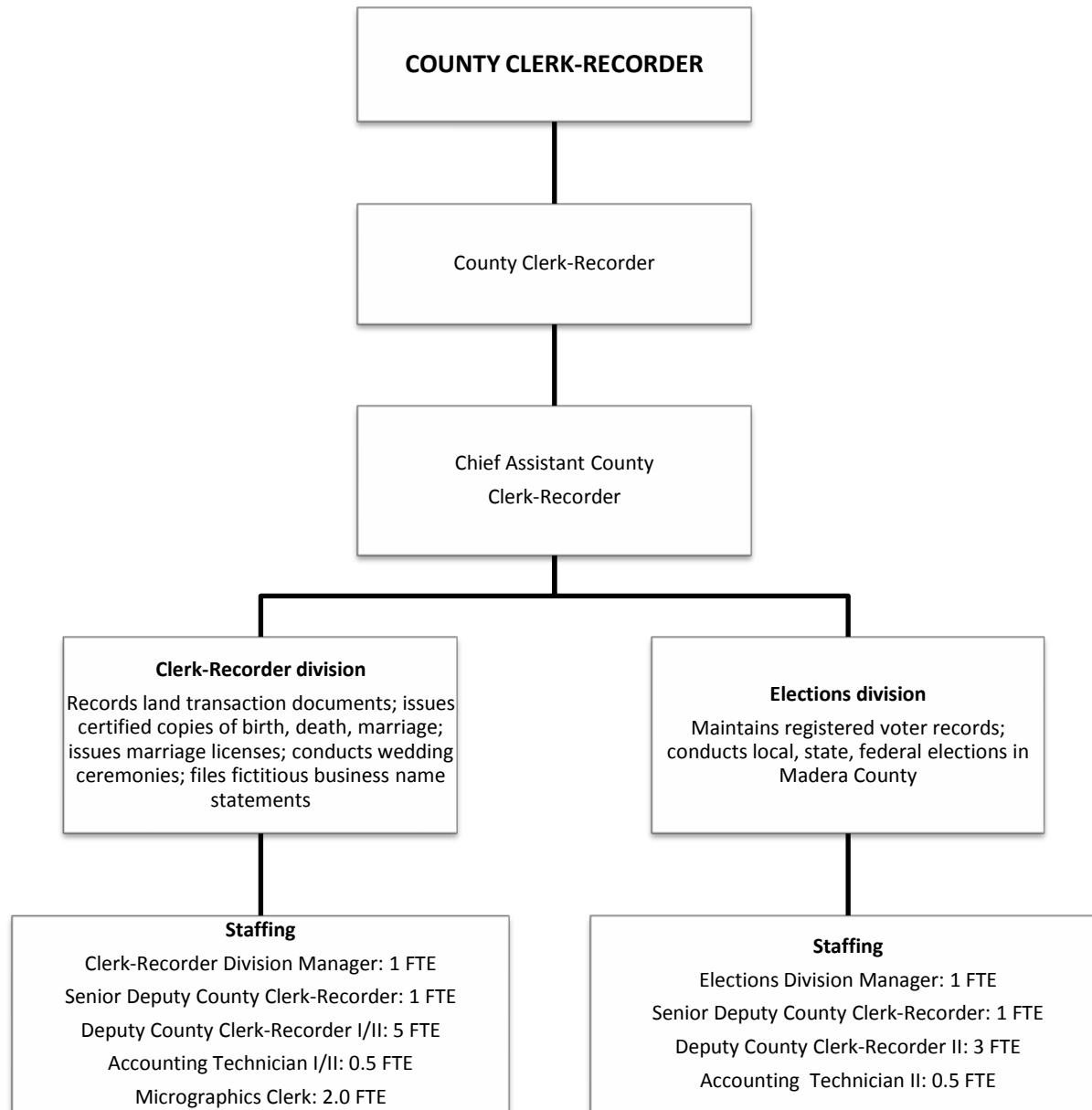
Total FTE: 53.5



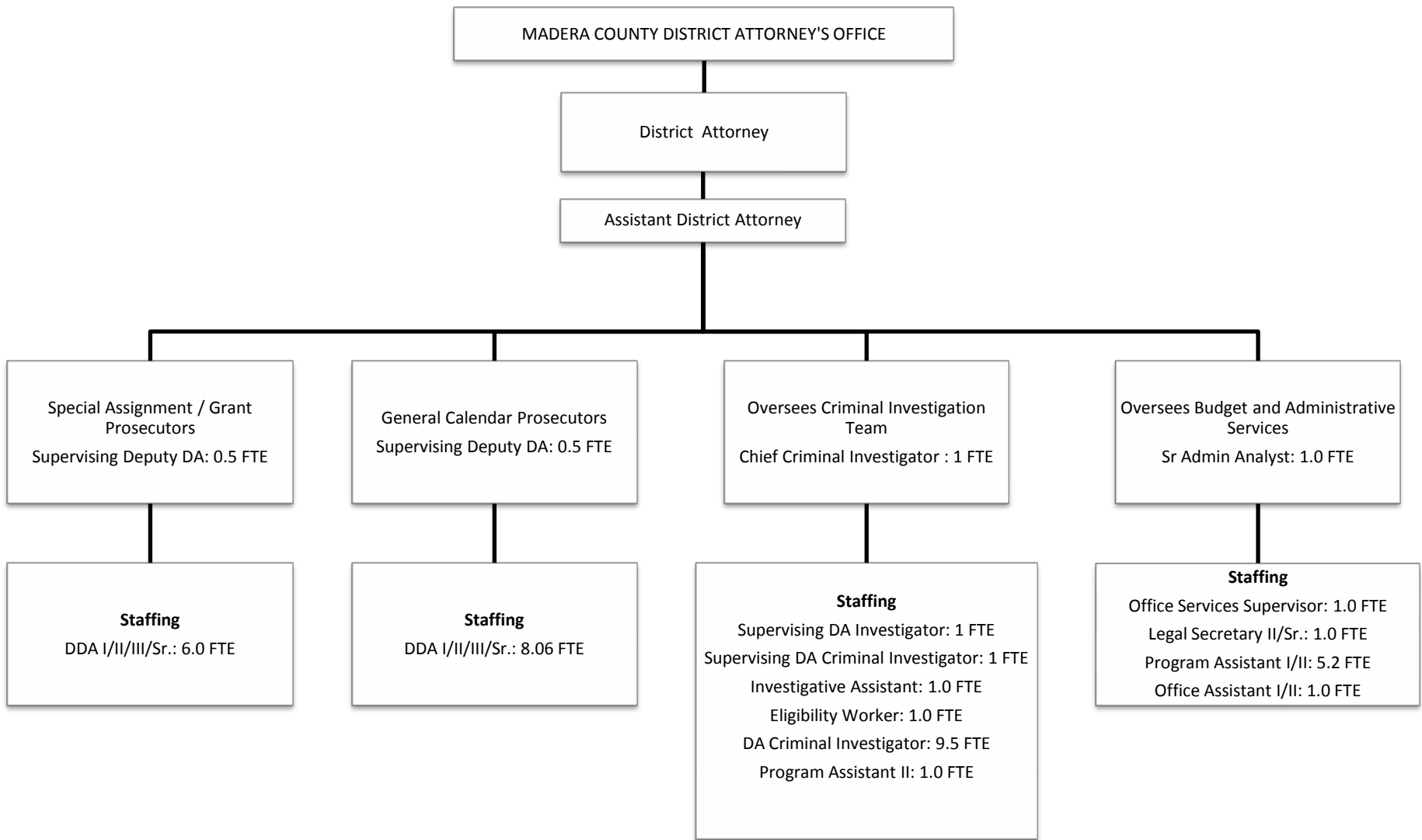
Total FTE: 30



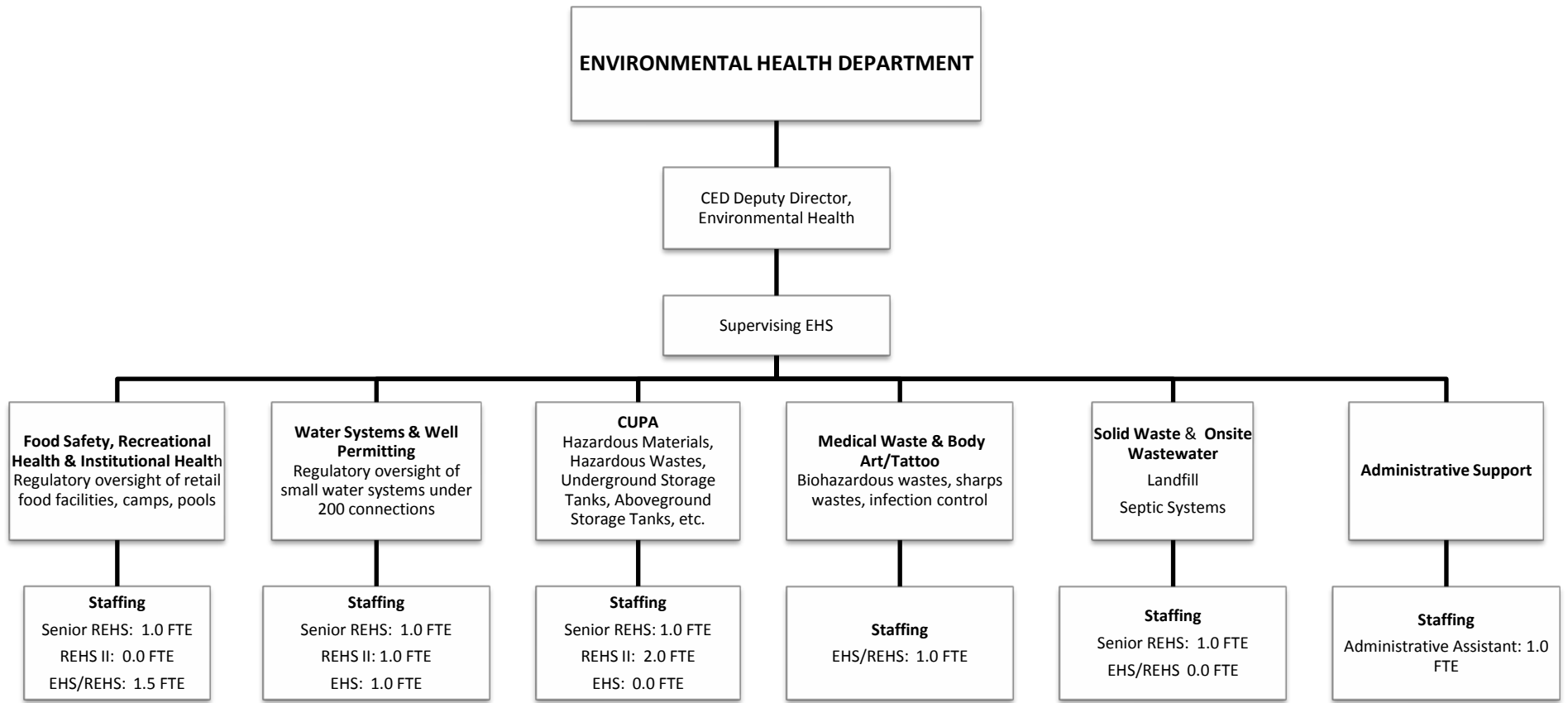
Total FTE: 122



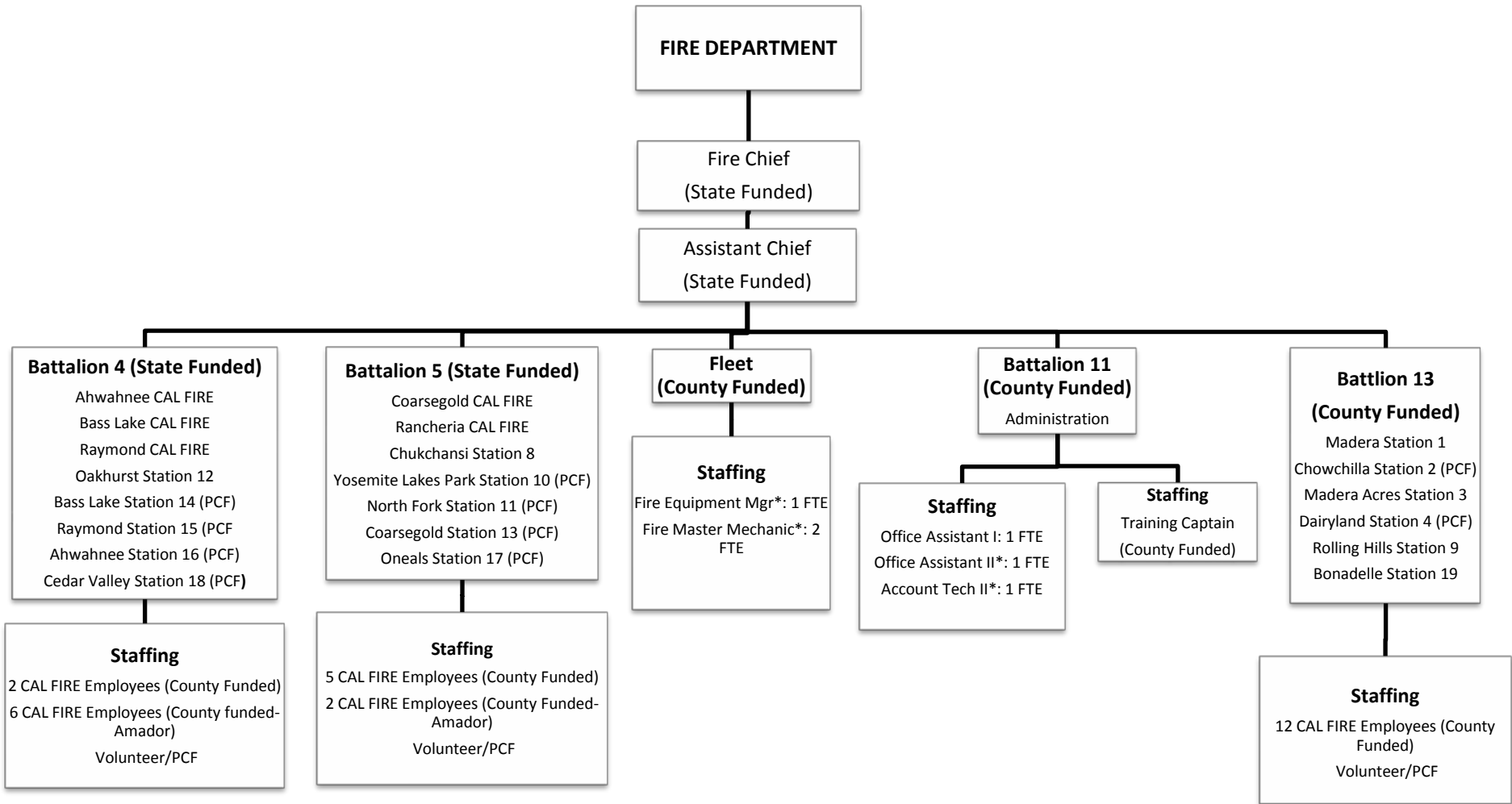
Total FTE: 17



Total FTE: 41.76

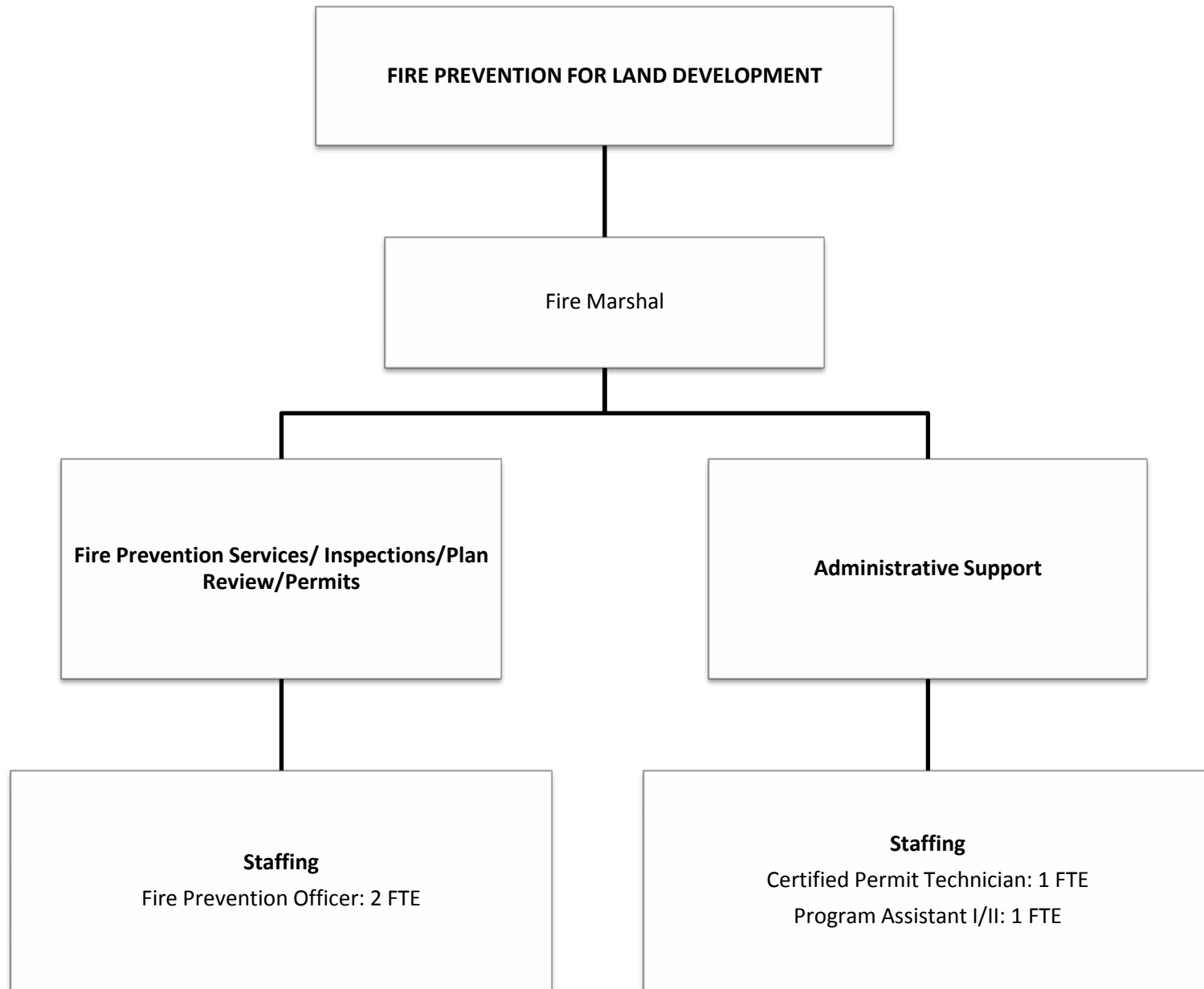


Total FTE 13.5



Total FTE: 5*

***Represents County Employees**

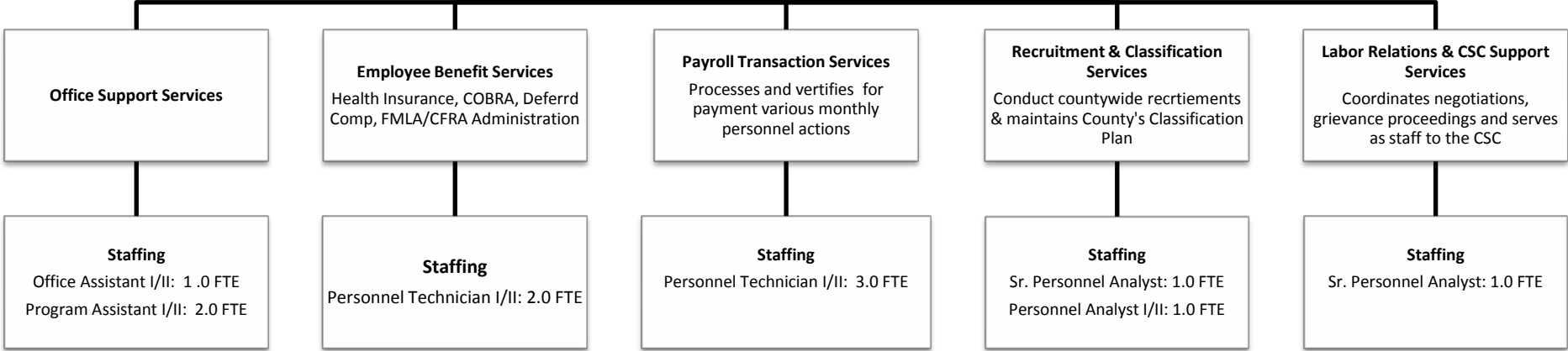


Total FTE: 5

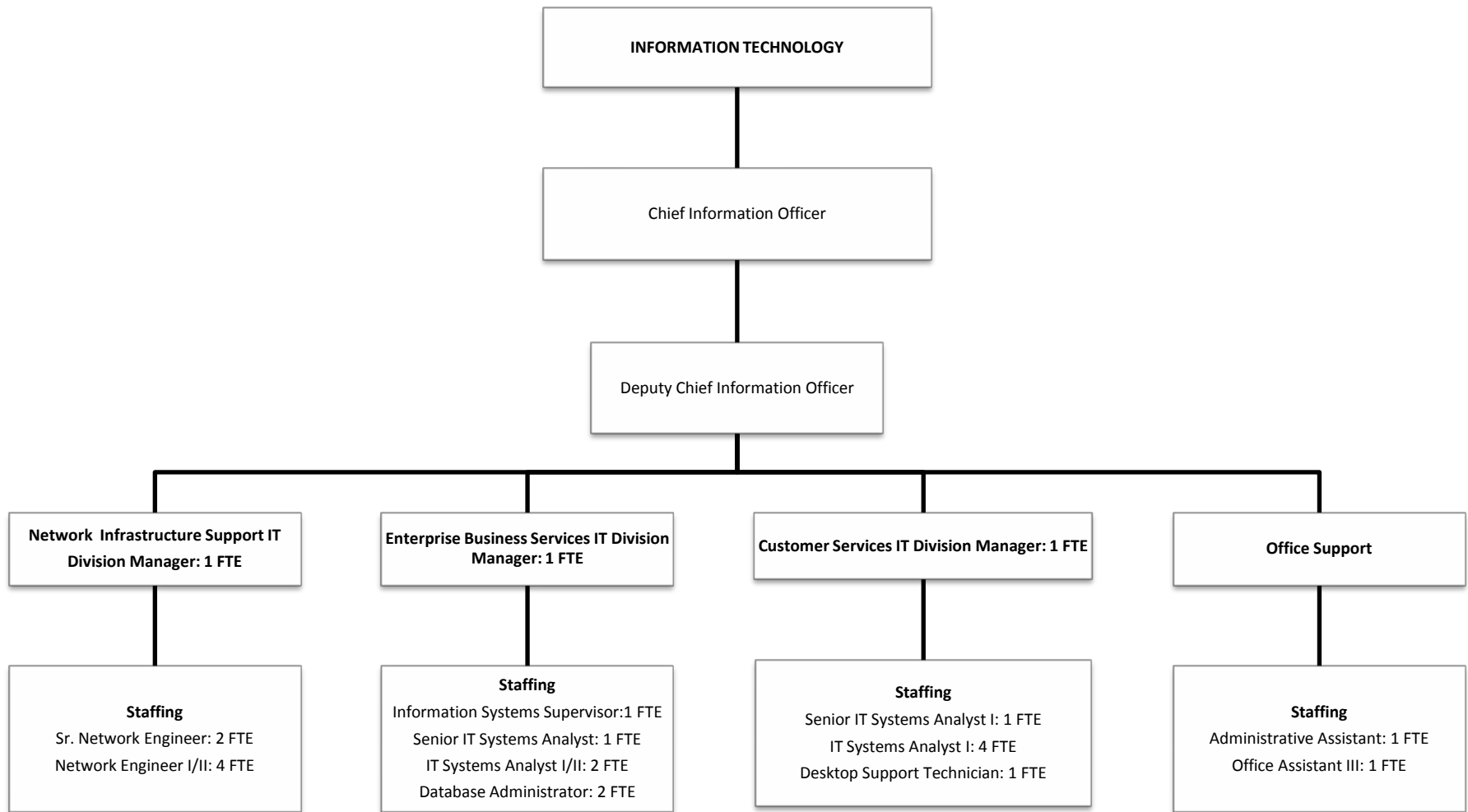
**HUMAN RESOURCES & OPERATIONS
DIVISION**

Deputy County Administrative
Officer - HR/Operations

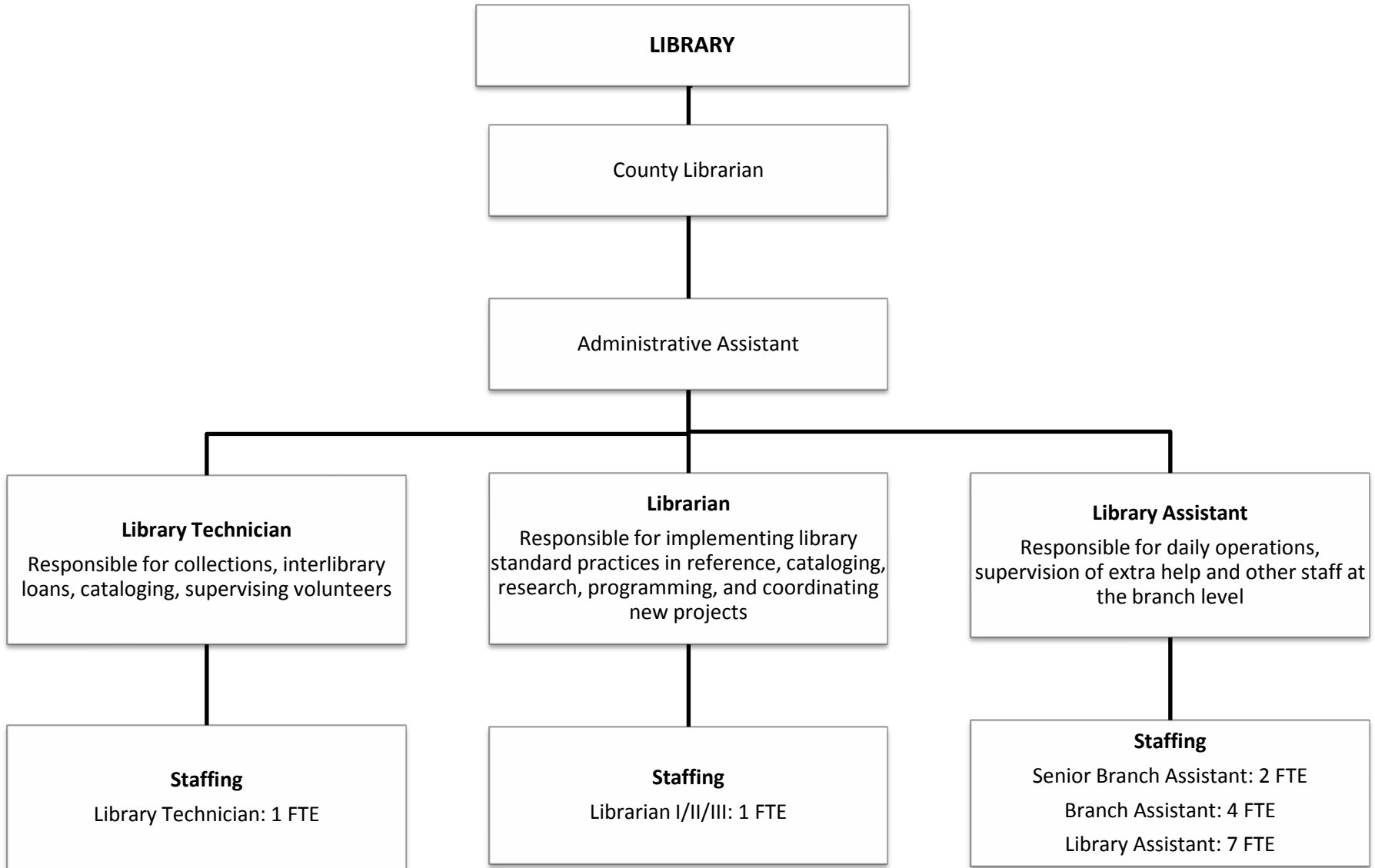
Assistant Director of Human
Resources/Operations



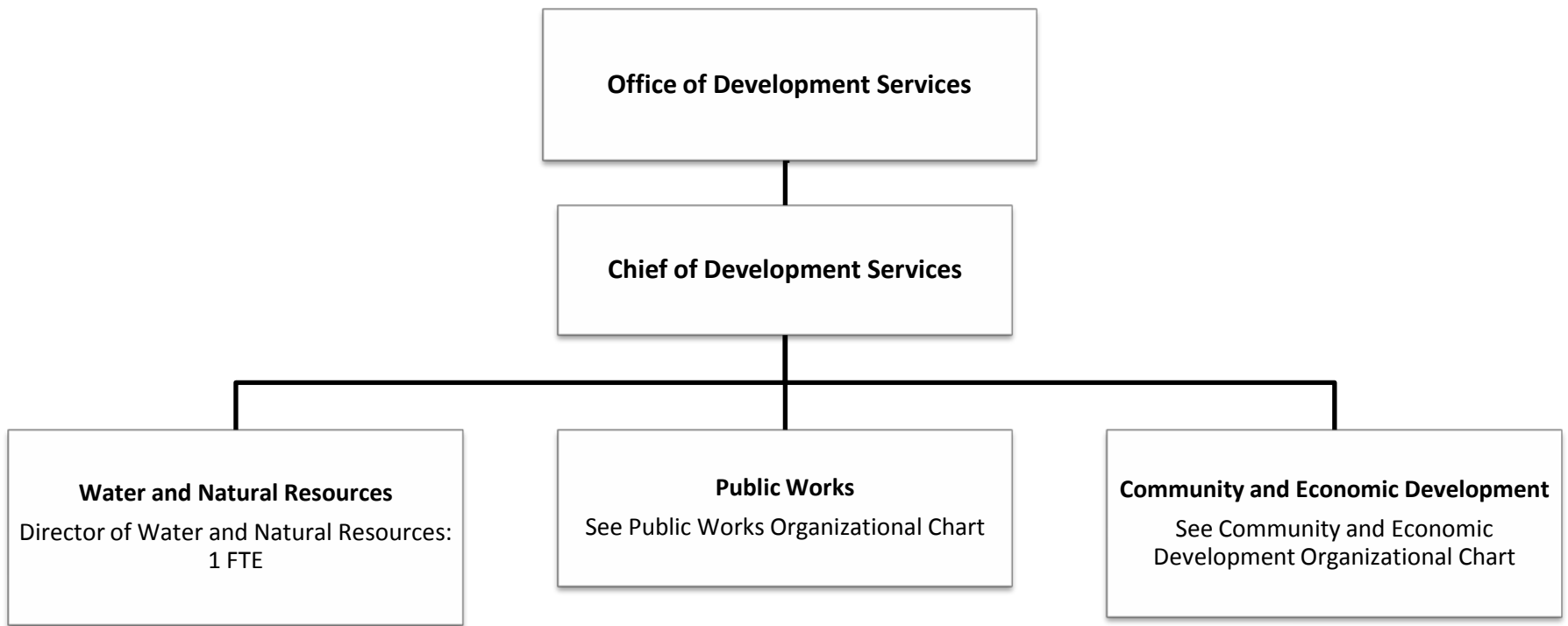
Total FTE: 13



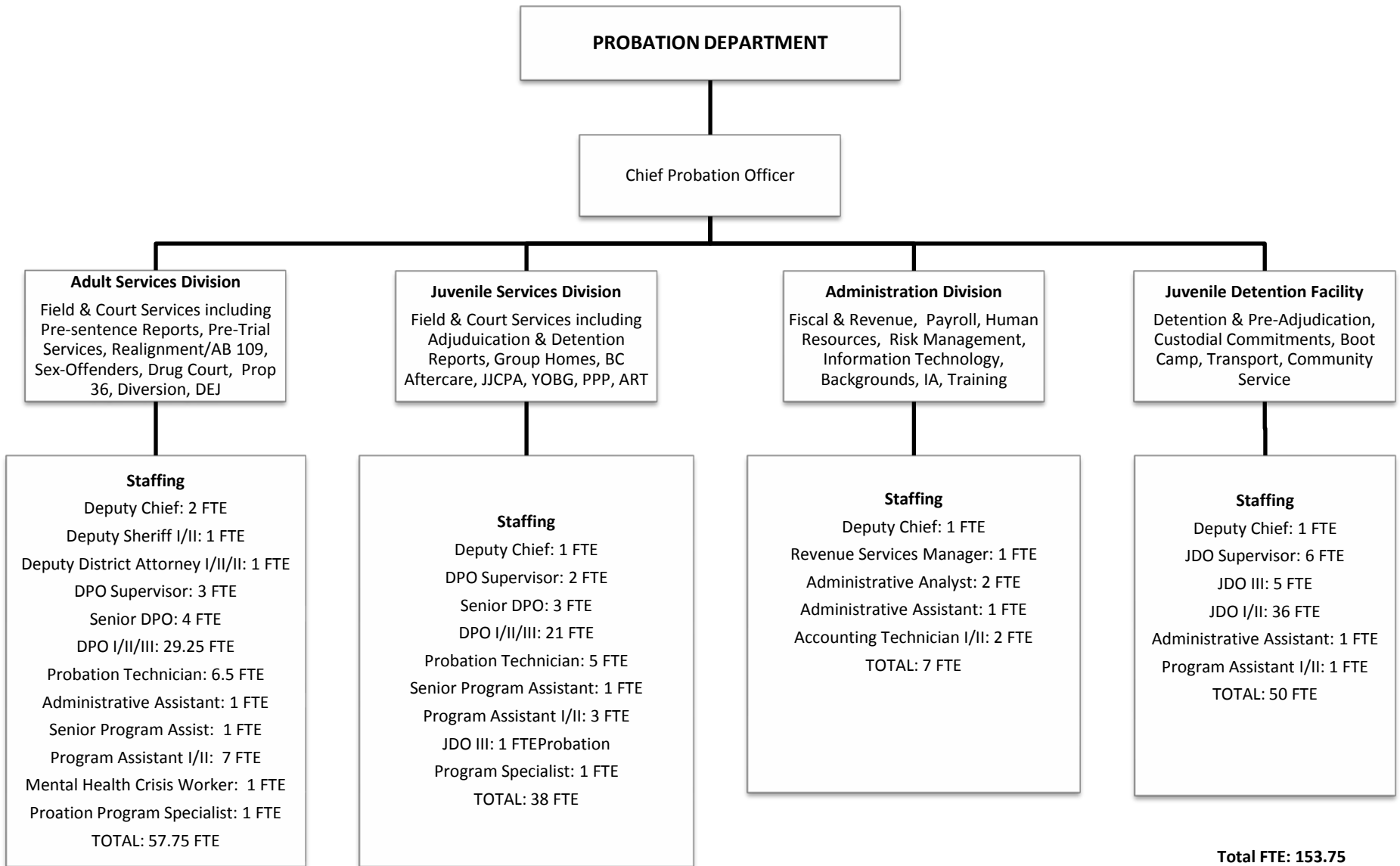
Total FTE: 25



Total FTE: 17



Total FTE: 17



PUBLIC HEALTH DEPARTMENT

Public Health Director

Deputy Public Health Director-Operations

Financial Operations

Manages budgets, contracts, billing, accounts payable, & accounts receivables, and M/C Admin Activities.

Staffing

Accountant-Auditor: 1 FTE
Account Tech: 1 FTE
Admin Analyst: 2.55 FTE
Sr Account Tech: 2 FTE
Staff Services Manager: 1 FTE

Women Infant & Children Program

Provides supplemental foods, health care referrals and nutrition education for low-income pregnant, breastfeeding and non-breastfeeding postpartum women, and to infants & children up to age five.

Staffing

Program Manager: 1 FTE
Nut Svcs Director: 1 FTE
Admin Analyst: 1.45 FTE
Reg Dietician: 2 FTE
Nutritionist: 2 FTE
Sr Nutrition Assistant: 4 FTE
Nutrition Assistant: 14 FTE
Ph Ed Assistant: .67 FTE

Deputy Public Health Director-Clinical Services

Communicable Disease Control & Prevention

Provides mandated reporting as well as health promotion, surveillance, investigation, and control of infectious diseases, as well as Lead Poisoning Prevention.

Staffing

Supv PHN: 1 FTE
Epidemiologist: 0.5 FTE
CD Investigator: 1 FTE
CM Assistant: 1 FTE
PH Ed Asst: 1 FTE
PHN I/II: 2 FTE

Maternal Child Adolescent Health

Provides case management services to address comprehensive health, physical, psychosocial needs of the maternal, child, & adolescent population.

Staffing

Sr PHN: 1 FTE
Program Mgr: 1 FTE
PHN : 2 FTE
PH Ed Asst: 8 FTE
H & W Asst: 1 FTE
PH Case Mgmt Asst: 3 FTE
Health Ed Coordinator: 1 FTE

Children's Medical Services

Provides care coordination to assist families with children who have special needs and who meet income criteria. Services include case management, medical appointment scheduling, transportation, assistance and access to diagnostic and treatment services.

Staffing

Supv PHN: 1 FTE
Sr. PHN: 1 FTE
PT/OT Unit Supv: 1 FTE
PT/ OT Therapist: 1 FTE
PHN : 4 FTE
RN: 2 FTE
PH Ed Asst: 2 FTE
Therapy Aide: 1 FTE
Program Asst: 2 FTE
Med Sec: 1 FTE
Office Asst: 1 FTE
Admin Asst: 1 FTE
Account Tech: 1 FTE

Clinical Services

Includes Immunization, Lead, Tuberculosis, Sexually Transmitted Disease, Pre-Employment Physicals, and Senior Clinics.

Staffing

Program Mgr: 1 FTE
RN: 1 FTE
PHN: 4 FTE
Physician: 1 FTE
NP: 0.5 FTE
PH Ed Asst: 2 FTE
PH Clin Svcs Asst: 2 FTE

Administration

Provides oversight to department operations, and several grant funded programs such as 1305 and Accreditation

Staffing

Admin Analyst: 2 FTE
Health Ed Coordinator: 2 FTE
Health Ed Specialist: 1 FTE
Office Asst: 1 FTE
Admin Asst: 1 FTE
Ph Ed Asst.: .33 FTE
CSW: 0.5 FTE

Laboratory Services

Monitors & detects public health threats, ranging from contamination in drinking water to infectious diseases.

Staffing

Lab Director: 1 FTE
Microbiologist: 1 FTE
Lab Technician: 1 FTE

Office of Policy & Planning

Coordinates vital statistics, health data, research & policy performance management. Including new CMSP Program.

Staffing

Program Manager: 1.15 FTE
Epidemiologist: 0.5 FTE
H. E. Specialist: 1 FTE
Sr Program Assistant: 1 FTE
Nutritional Assistant: 1 FTE
Office Assistant: 1 FTE

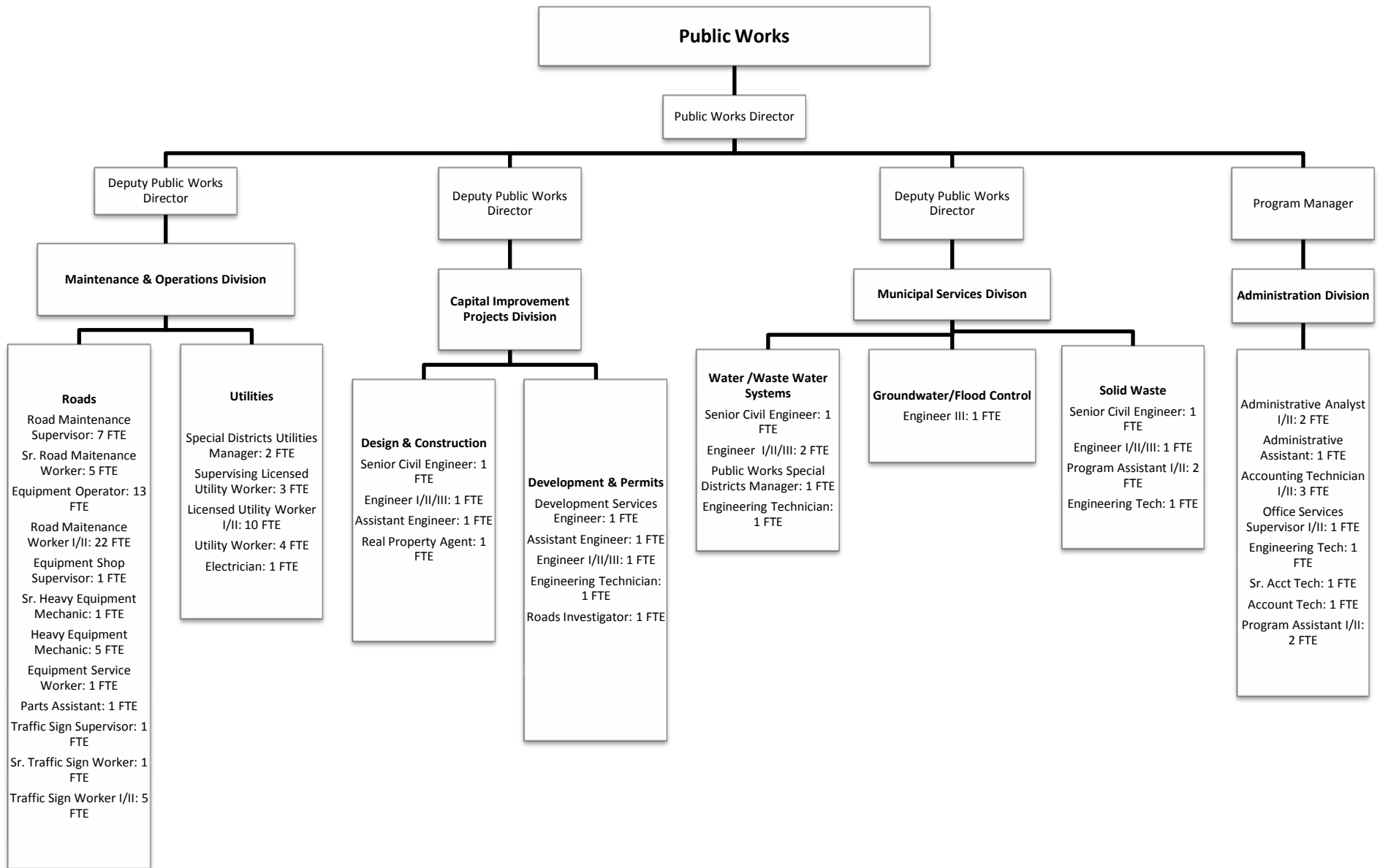
Community Health

Provides health education to prevent chronic diseases and builds community capacity for emergency preparedness

Staffing

Program Mgr: 1.85 FTE
Hlth Ed Coordinator: 1 FTE
Hlth Ed Specialist: 4 FTE
Health & Well Asst: 7 FTE

Total FTE: 122



Total FTE: 128

Note: Total FTE includes staffing from Roads and Special Districts

SHERIFF-CORONER

Sheriff

Commander: 2 FTE

Internal Services Division

Conducts Background and Internal Affairs Investigations, Operates Laboratory, Secures Evidence, Manages Training Program.

Staffing

Lieutenant: 1 FTE
ID Specialist: 2 FTE
Property and Evidence Tech: 2 FTE

Patrol Division

Provides direct law enforcement services; patrols Bass Lake; provides search/rescue; enforces off-highway vehicle laws

Staffing

Sergeants: 11 FTE
Deputy Sheriff: 42 FTE
Corporal: 9 FTE

Administrative Services Division

Provides general services, budgeting; purchasing; grants management; CCW; statutory registration, Court Security Unit, Civil Unit, and Records Unit

Staffing

Lieutenant: 2 FTE
Sergeant: 1 FTE
Deputy Sheriff: 12 FTE
Corporal: 1 FTE
Sheriff Business Manager: 1 FTE
Chief Civil Deputy: 1 FTE
Administrative Analyst II/Sr: 1 FTE
Community Service Officer: 3 FTE
Admin Analyst II/Account Tech II: 1 FTE
Senior Program Assistant: 2 FTE
Program Assistant: 7 FTE
Administrative Assistant: 2 FTE
Supv Communication Dispatcher: 1 FTE
Communication Dispatchers: 9 FTE

Investigations Division

Investigates crimes; provides targeted enforcement of narcotic laws; targeted investigations of Ag Crimes

Staffing

Sergeants: 1 FTE
Deputy Sheriff : 5 FTE
Sr Deputy Coroner: 1 FTE
Deputy Coroner: 2 FTE
Program Assistant: 2 FTE

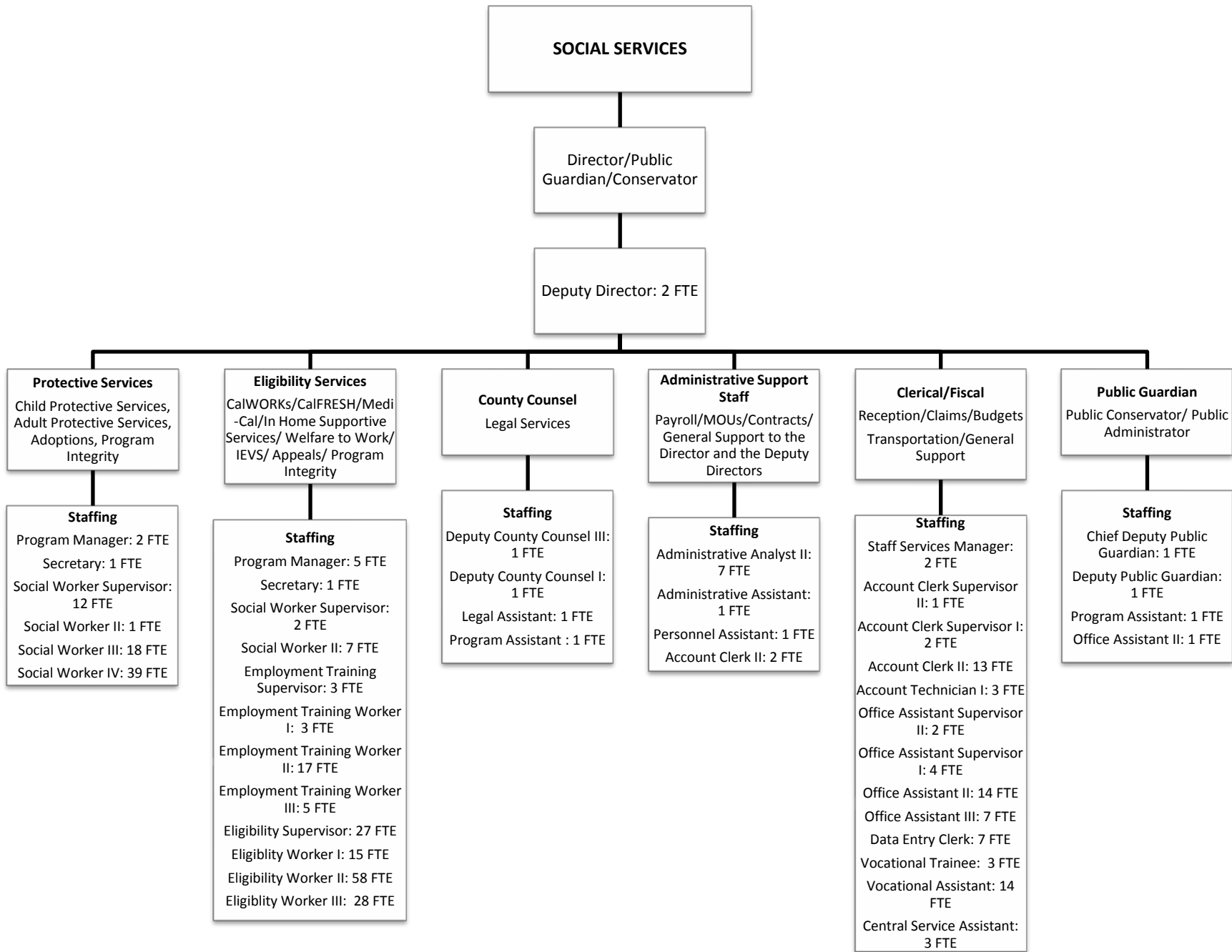
Emergency Services Division

Provides advanced planning and management support during crisis operations; schedules training; ; provides dispatch services to all divisions.

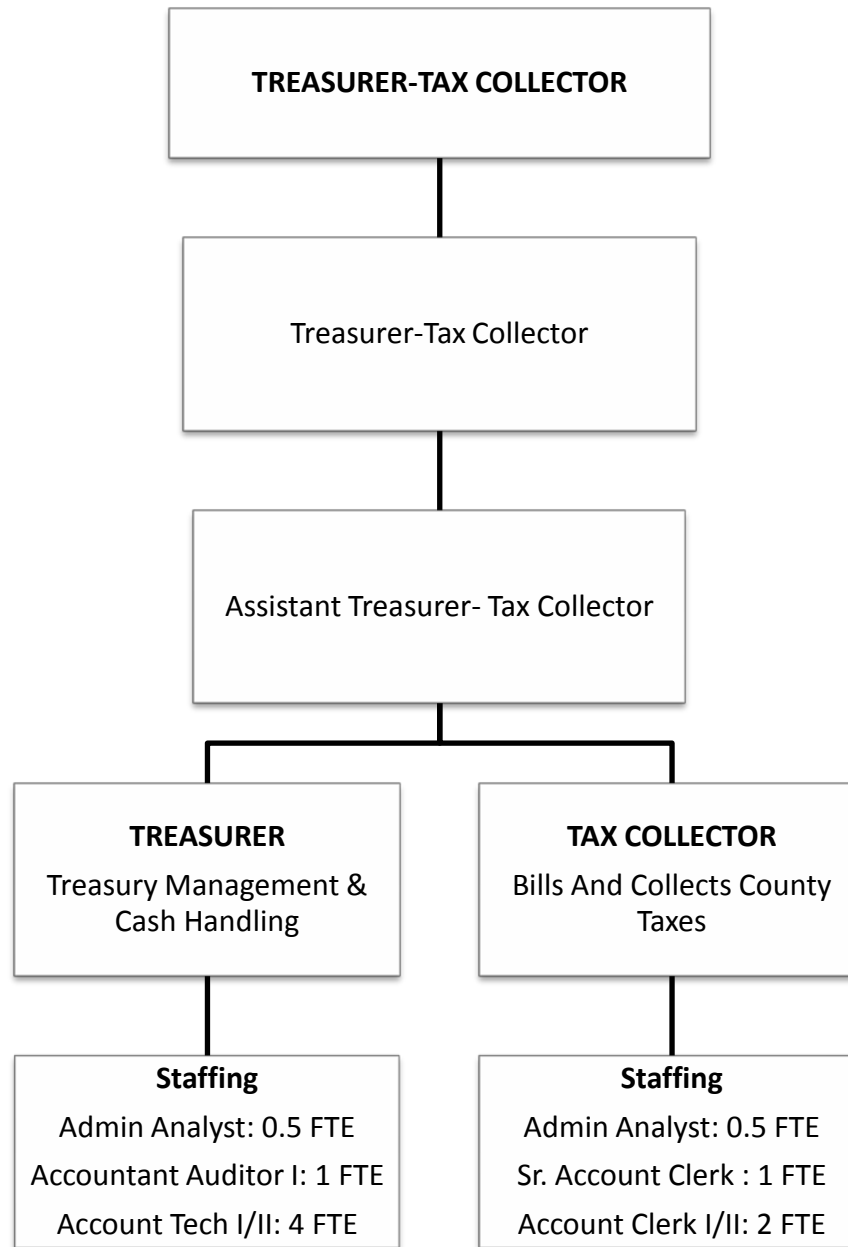
Staffing

Sergeant: 1 FTE
Community Service Officer: 1 FTE
Deputy Sheriff: 1 FTE
Sheriff Public Information Officer: 1 FTE
Emergency Services Coordinator: 1 FTE
Program Assistant: 1 FTE

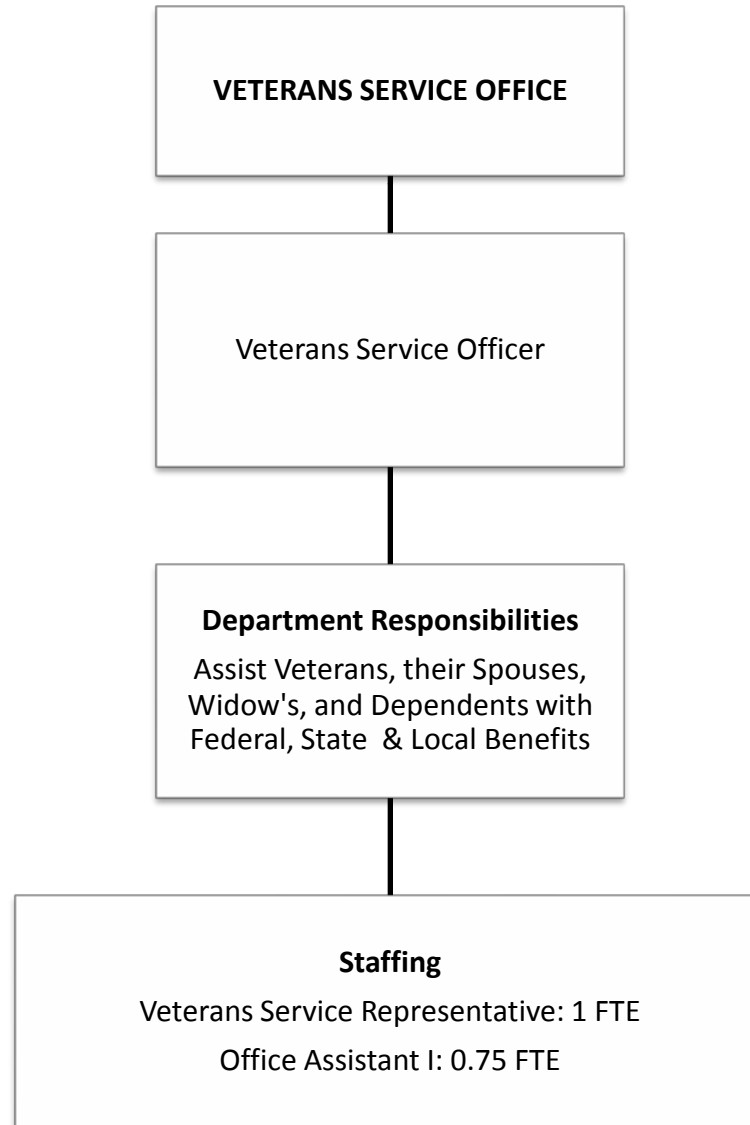
Total FTE: 131



Total FTE: 341



Total FTE: 11



Total FTE: 1.75