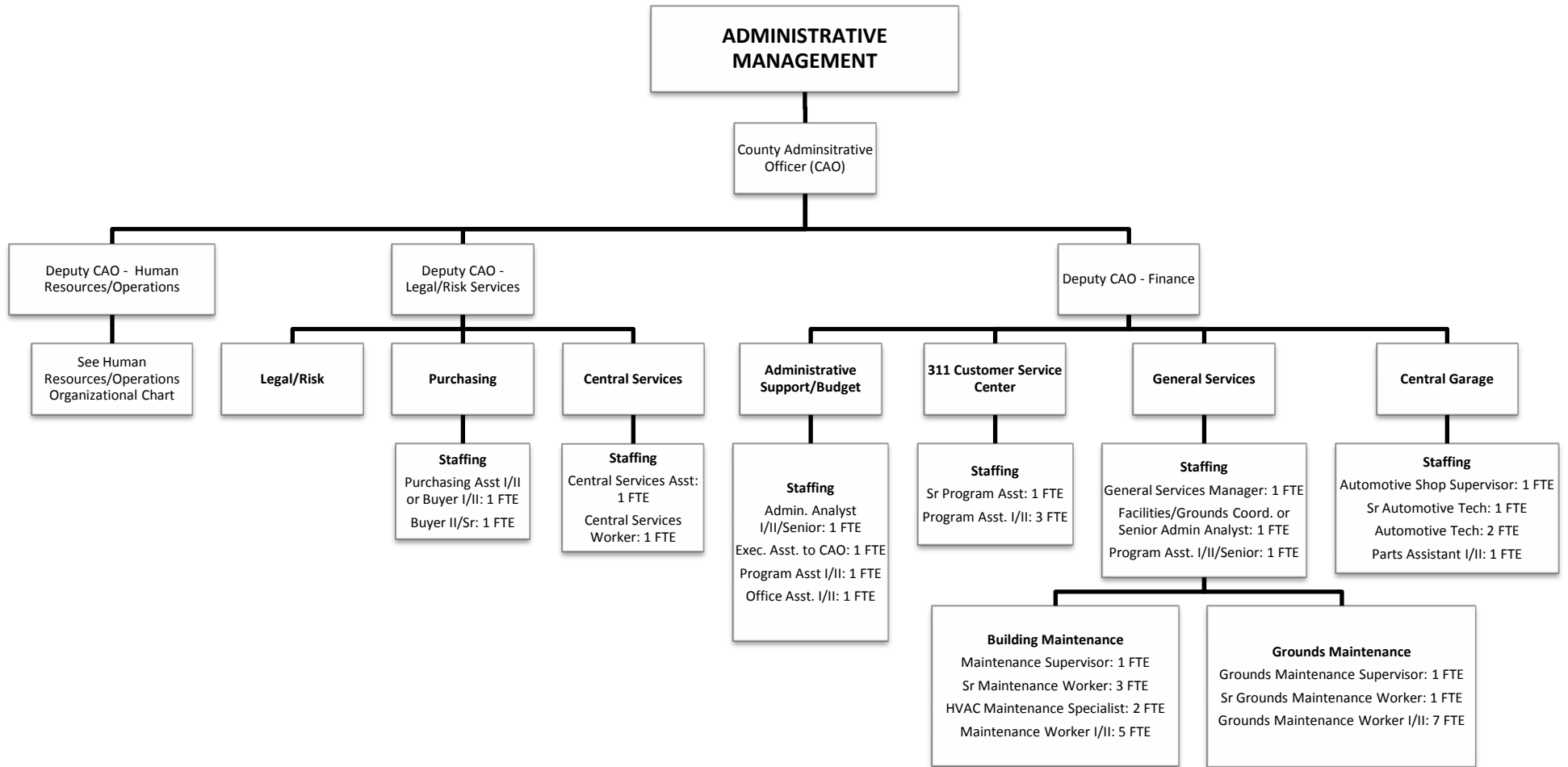


## **DEPARTMENTAL ORGANIZATIONAL CHARTS**

The Departmental Organizational Charts contained in this document reflect the 2016-17 Recommended staffing allocations, inclusive of funded and unfunded positions, and are shown by assignment within the functional areas or programs of the department. These charts are intended to only provide an overview of the department and its functions/ programs and how those areas are staffed.

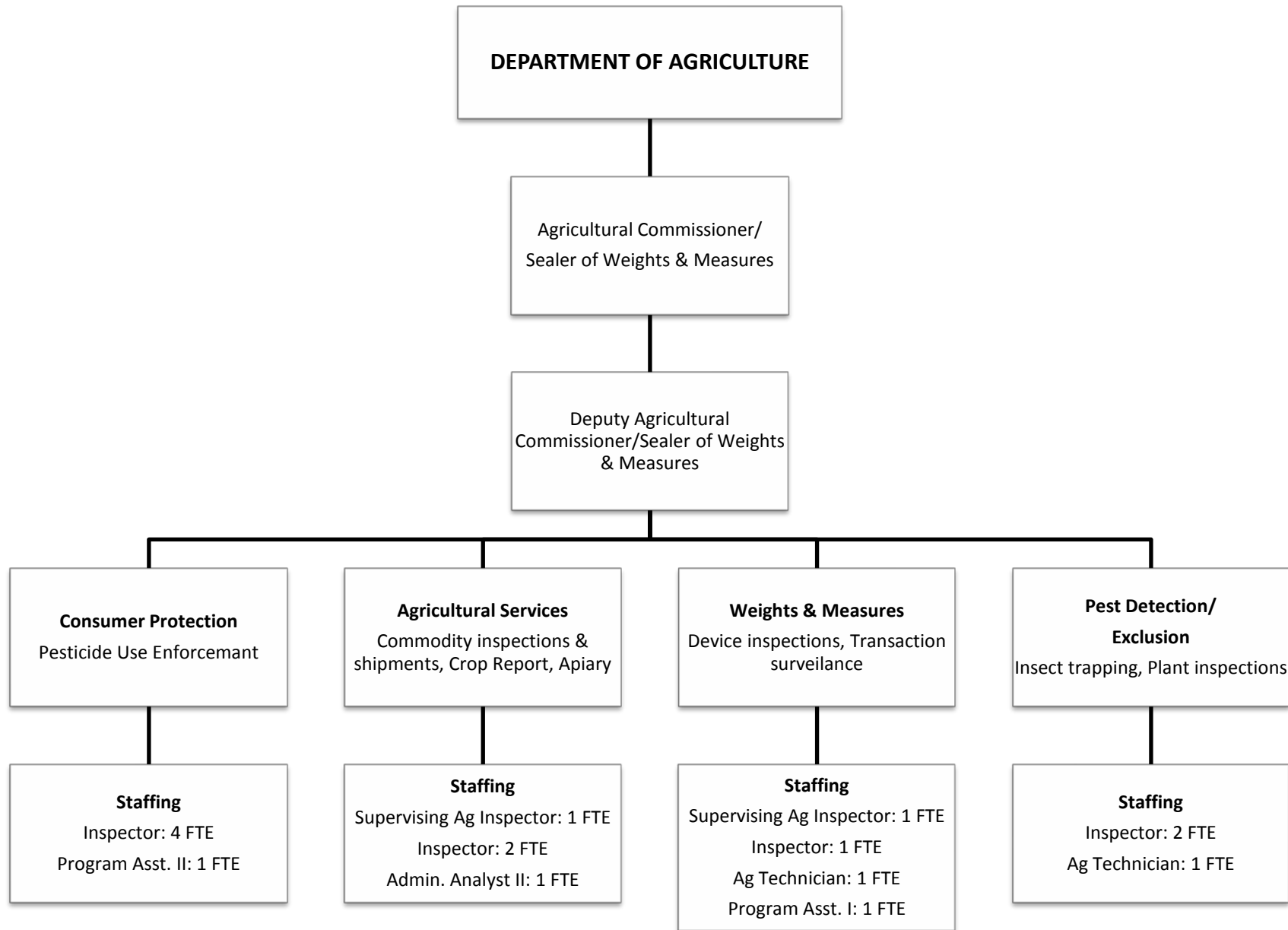
For more information on funded and unfunded positions, please refer to the specific departmental budget narrative.

*Note: Organizational charts are presented in alphabetical order by department.*

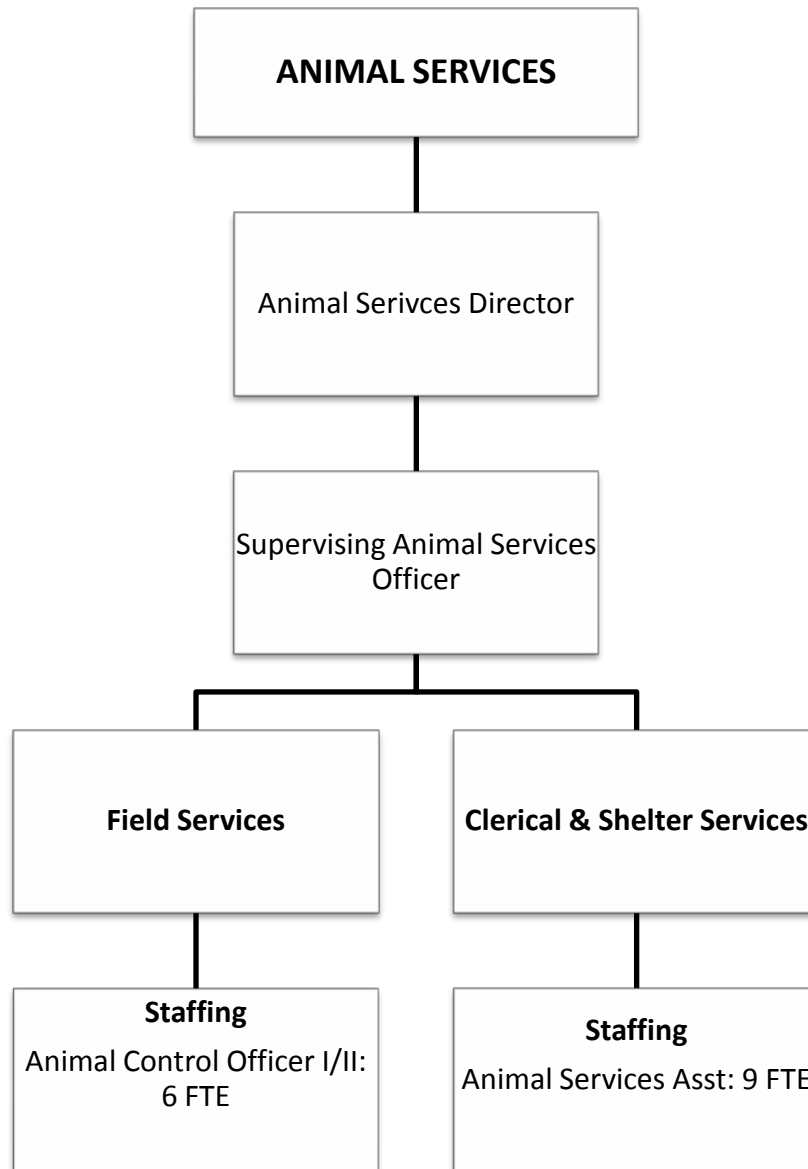


**Total FTE: 42**

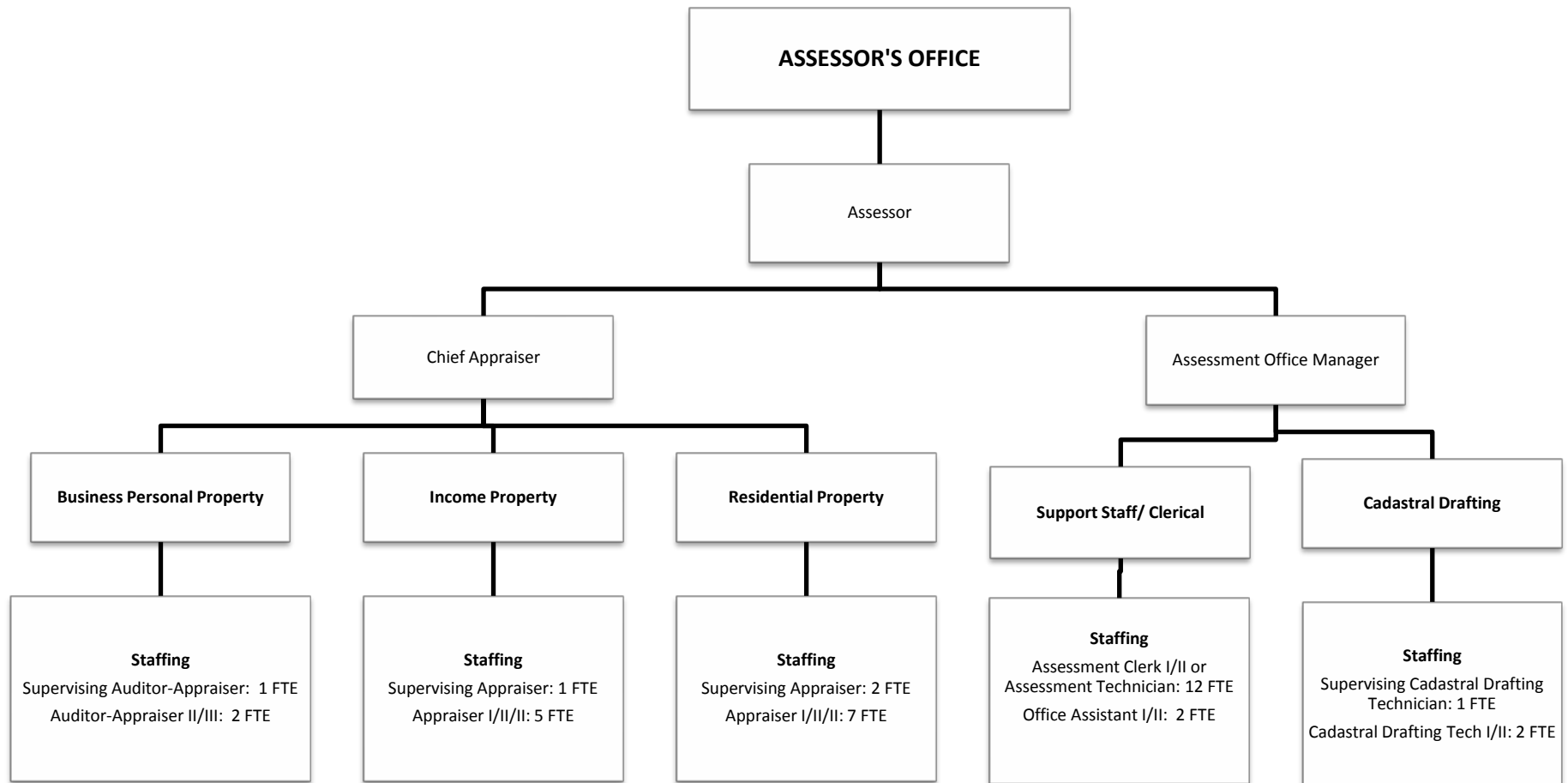
**Note: Total FTE does not include staffing reflected on Human Resources/Operations Organizational Chart**



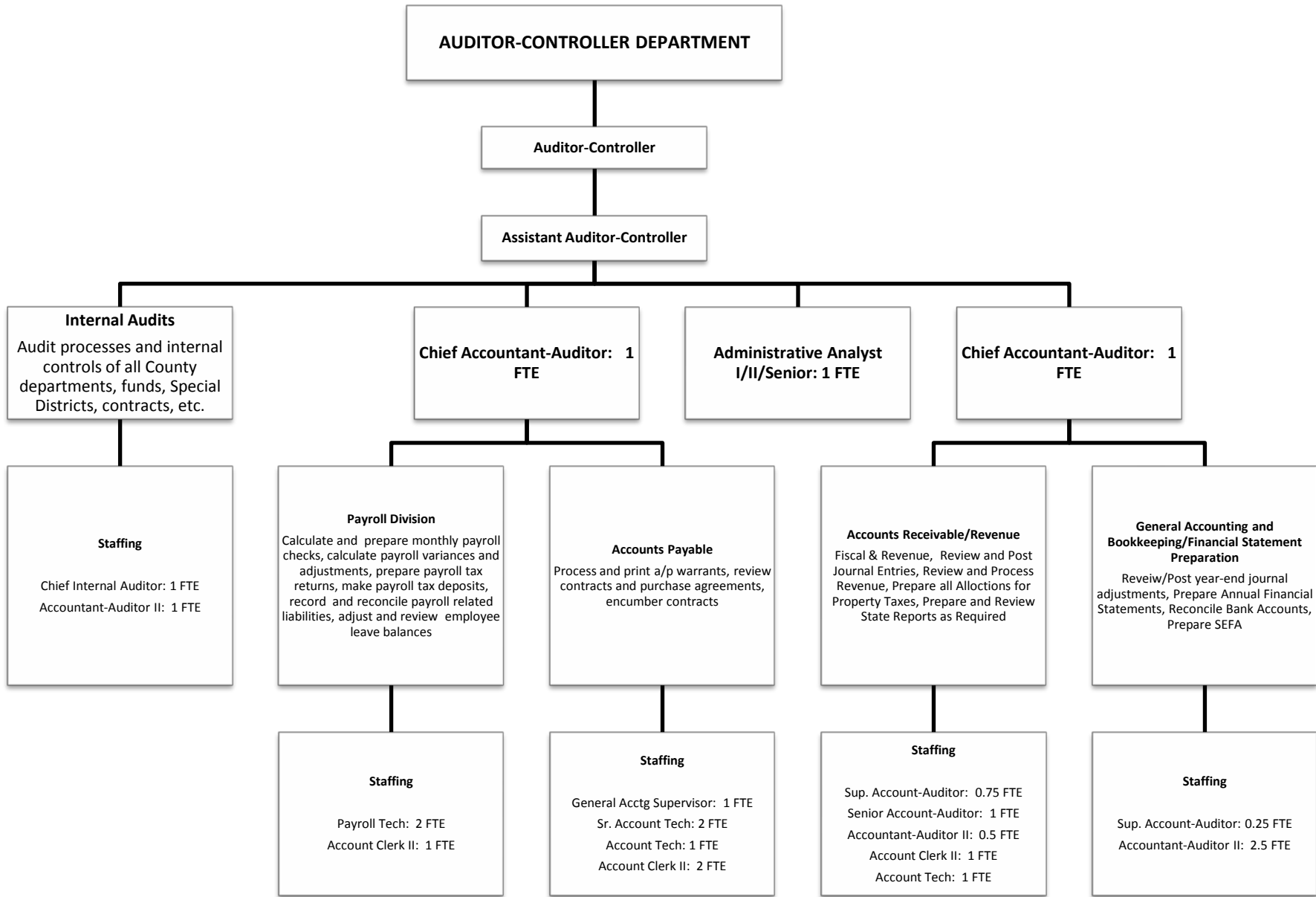
**Total FTE: 18**



**Total FTE: 17**



**Total FTE: 38**



**Total FTE: 23**

**BEHAVIORAL HEATH SERVICES**

Director of Behavioral Health Services

Assistant Behavioral Health Director

**Children Services & Rural Clinics Division**  
Mental Health / Alcohol & Drug Programs

**Adults Services / MHS Community Outreach QM & Managed Care Plan Division**  
Mental Health / Alcohol & Drug Programs

**Fiscal Division**  
Accounts Payable & Accounts Receivable

**Administrative Division**  
Data Collection / Human Resources / Purchasing

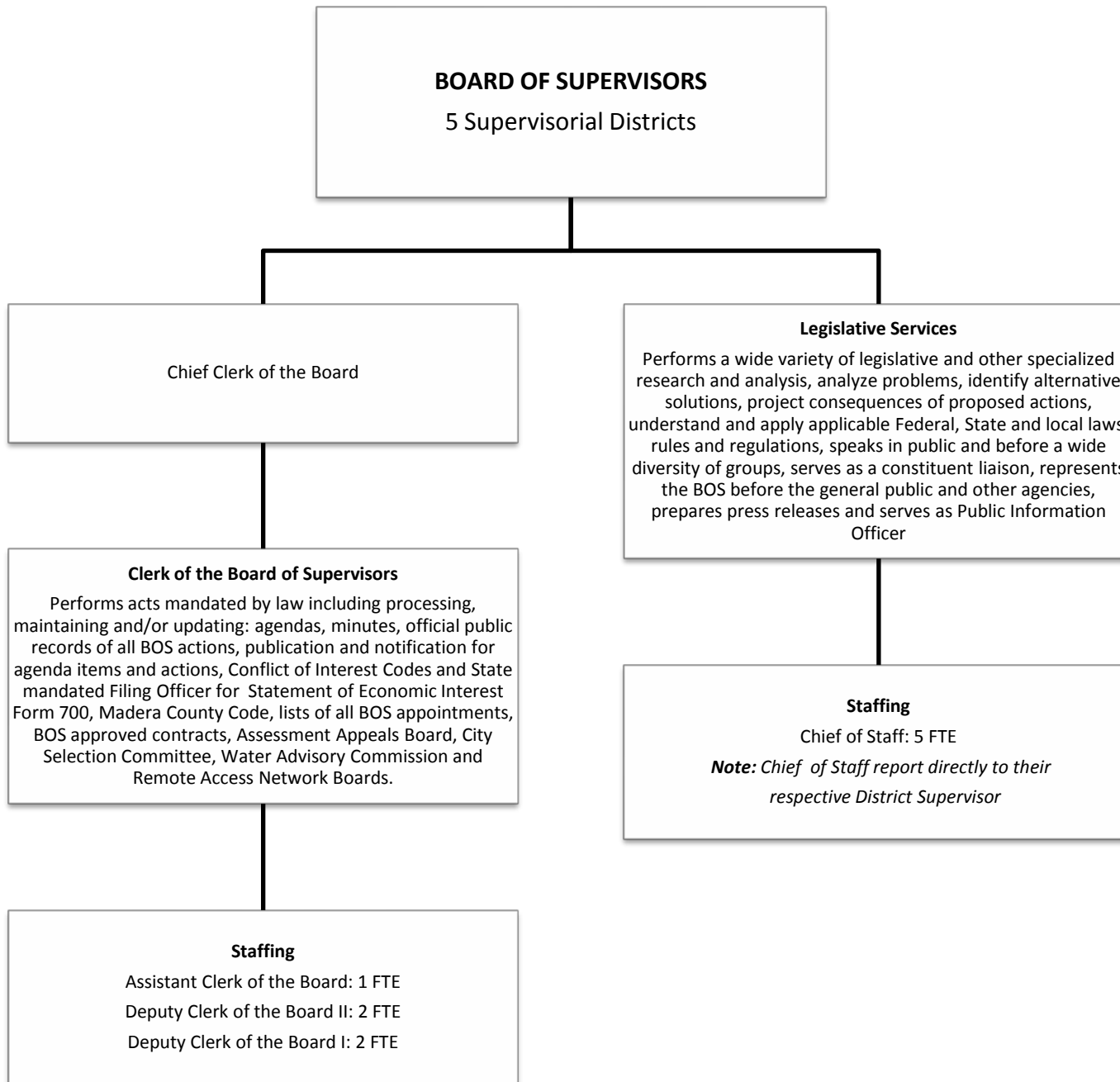
**Staffing**  
Division Manager: 1.0 FTE  
Behavioral Health Program Supervisor or Supervising Mental Health Clinician: 7.0 FTE  
Licensed/Prelicensed Mental Health Clinician or Senior Mental Health Case Worker: 32 FTE  
Inpatient Nurse Liaison: 1.0 FTE  
Certified Alcohol & Drug Counselor: 10.0 FTE  
Mental Health Caseworker I/II: 14.0 FTE  
Program Assistant I/II: 5.0 FTE  
Sr. Program Assistant: 3.0 FTE  
Vocational Assistant-Driver: 13.0 FTE

**Staffing**  
Division Manager: 1.0 FTE  
Behavioral Health Program Supervisor or Supervising Mental Health Clinician: 3.0 FTE  
Licensed/Prelicensed Mental Health Clinician or Senior Mental Health Case Worker: 14 FTE  
Psychiatric Nurse I/II or Registered Nurse I/II: 3.0 FTE  
Mental Health Caseworker I/II: 8.0 FTE  
Health Education Coordinator: 2.0 FTE  
Administrative Analyst I/II: 1.0 FTE  
Administrative Assistant :1.0 FTE  
Program Assistant I/II: 3.0 FTE  
Office Assistant I/II: 4.0 FTE

**Staffing**  
Division Manager: 1.0 FTE  
Accountant Auditor I/II: 1.0 FTE  
Account Clerk I/II or Account Tech I/II: 3.0 FTE  
Program Assistant I/II: 1.0 FTE

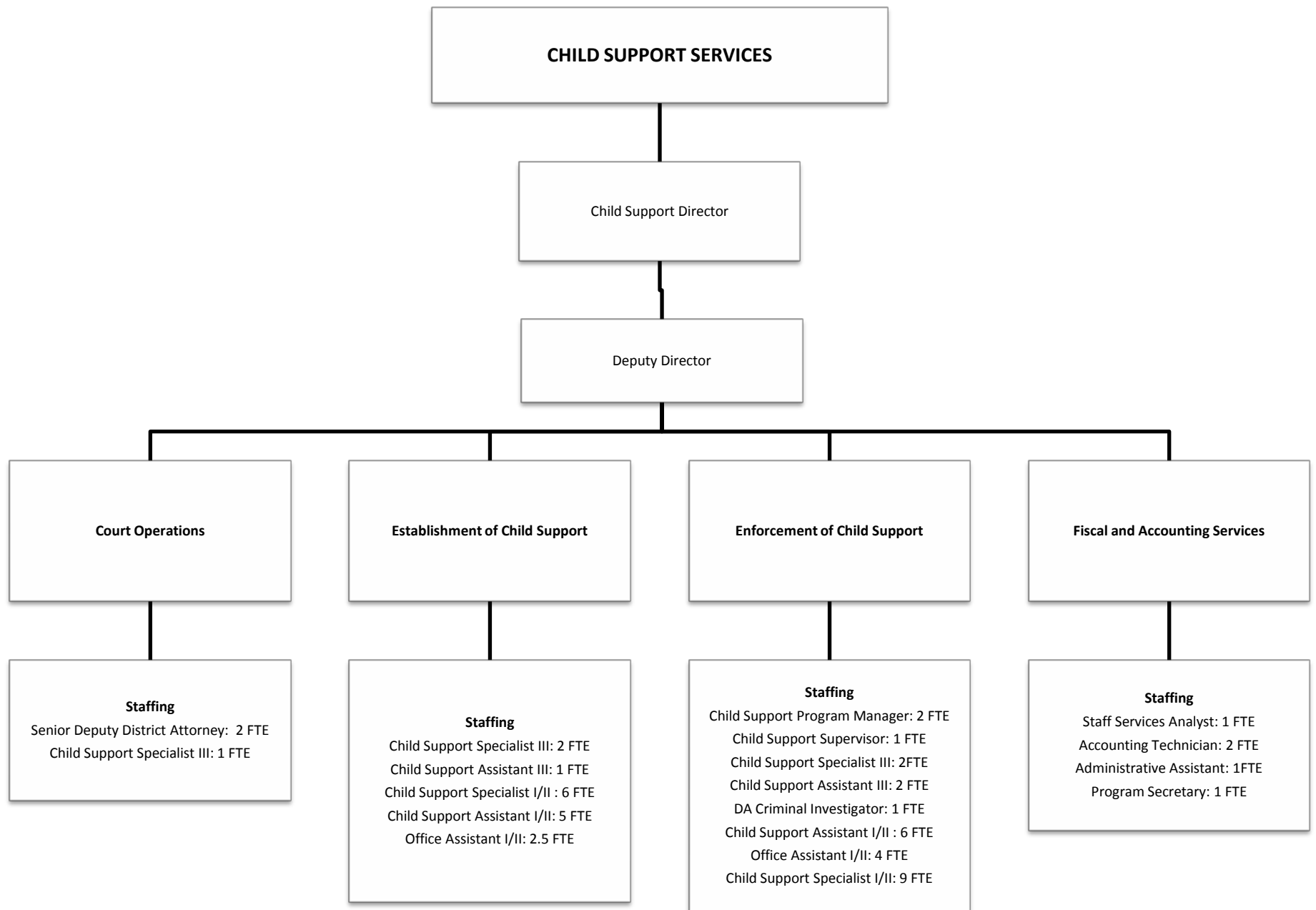
**Staffing**  
Staff Service Manager: 2.0 FTE  
Administrative Analyst I/II: 5.0 FTE  
Personnel Tech I/II or Accounting Tech I/II: 1.0 FTE  
Administrative Assistant: 2.0 FTE  
Central Services Worker:2.0 FTE  
Vocational Assistant-Driver: 2.0 FTE  
Program Assistant I/II: 4.0 FTE  
Office Assistant I/II: 2.0 FTE

**Total FTE: 154**

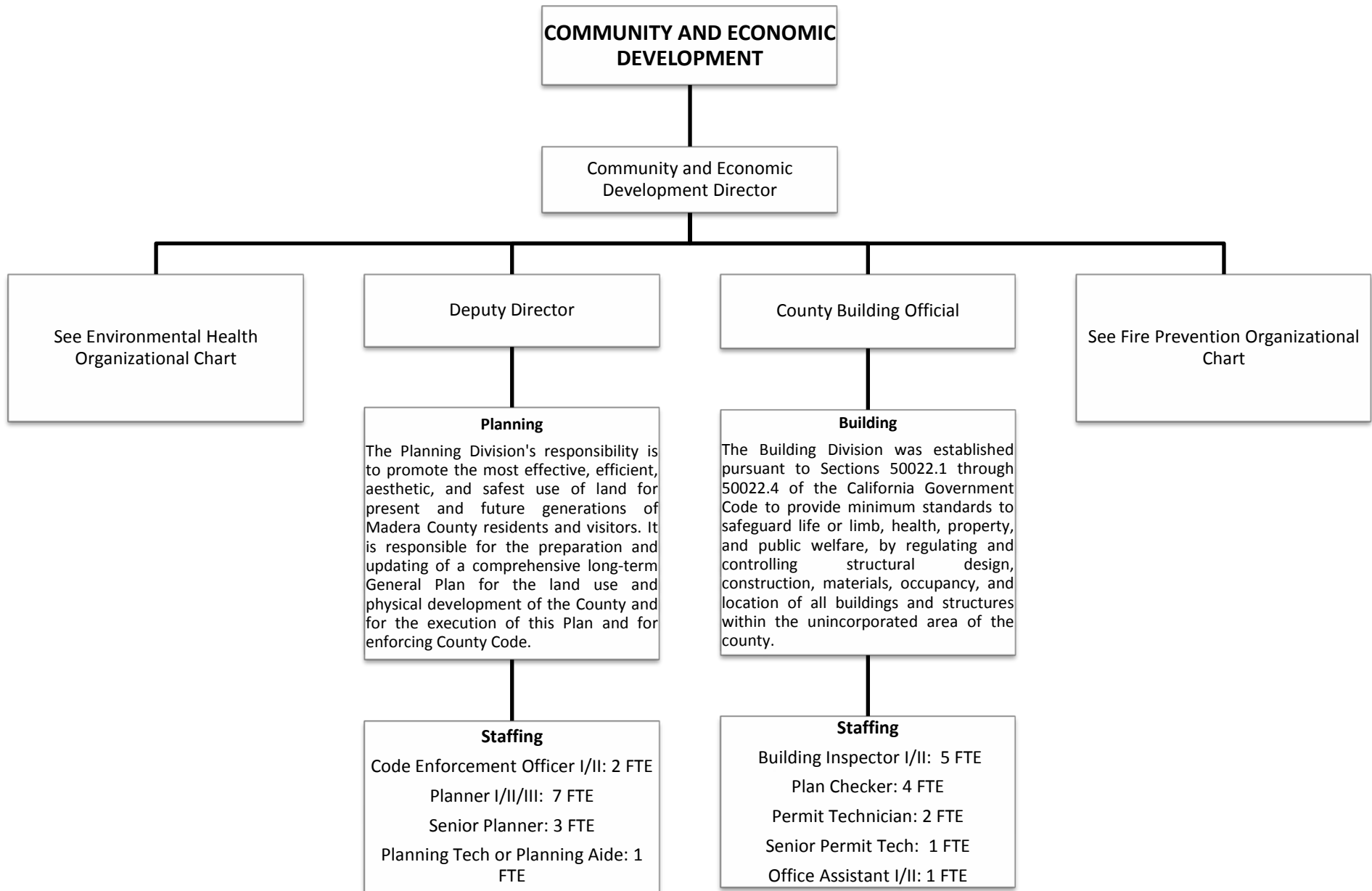


**Total FTE: 16**

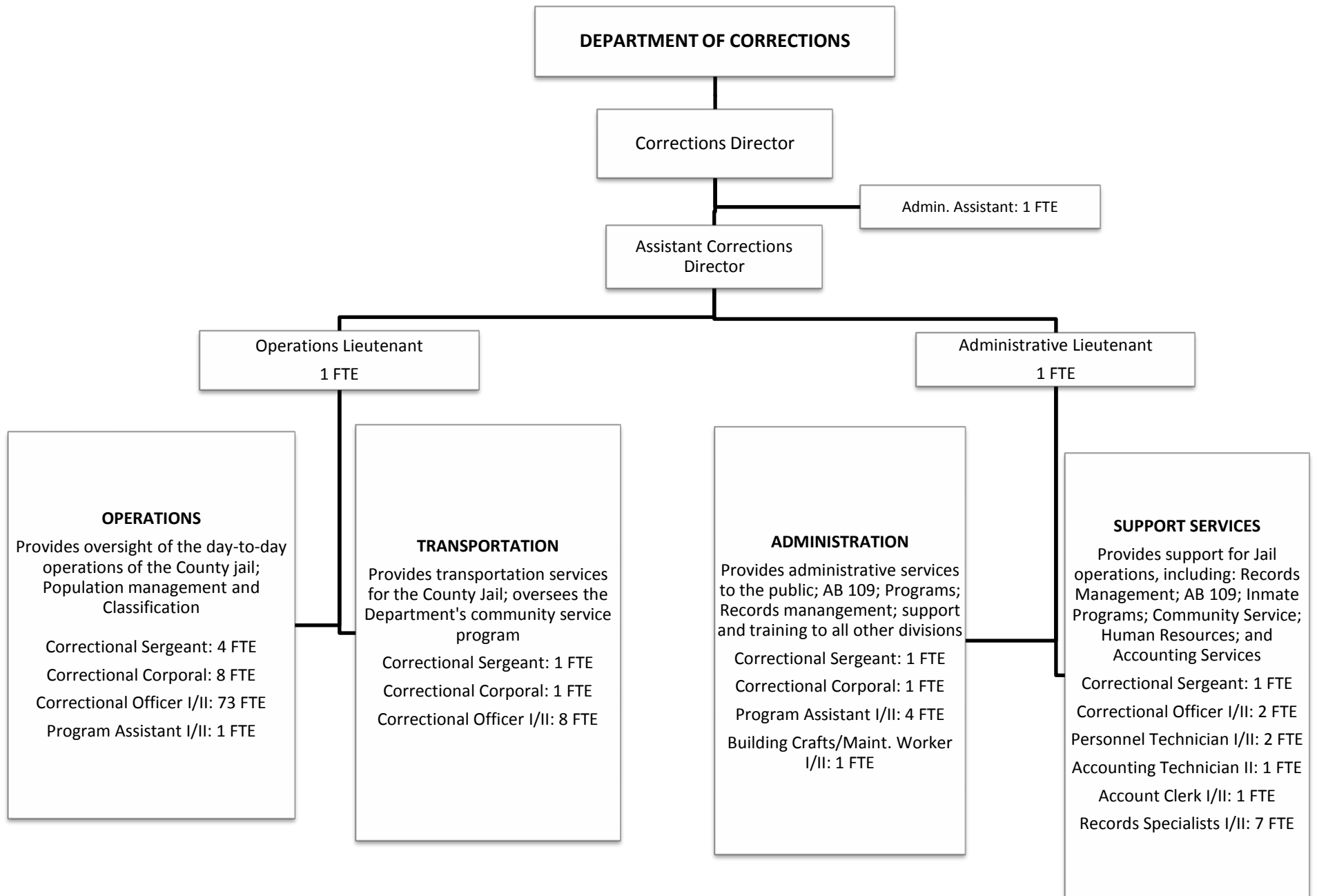




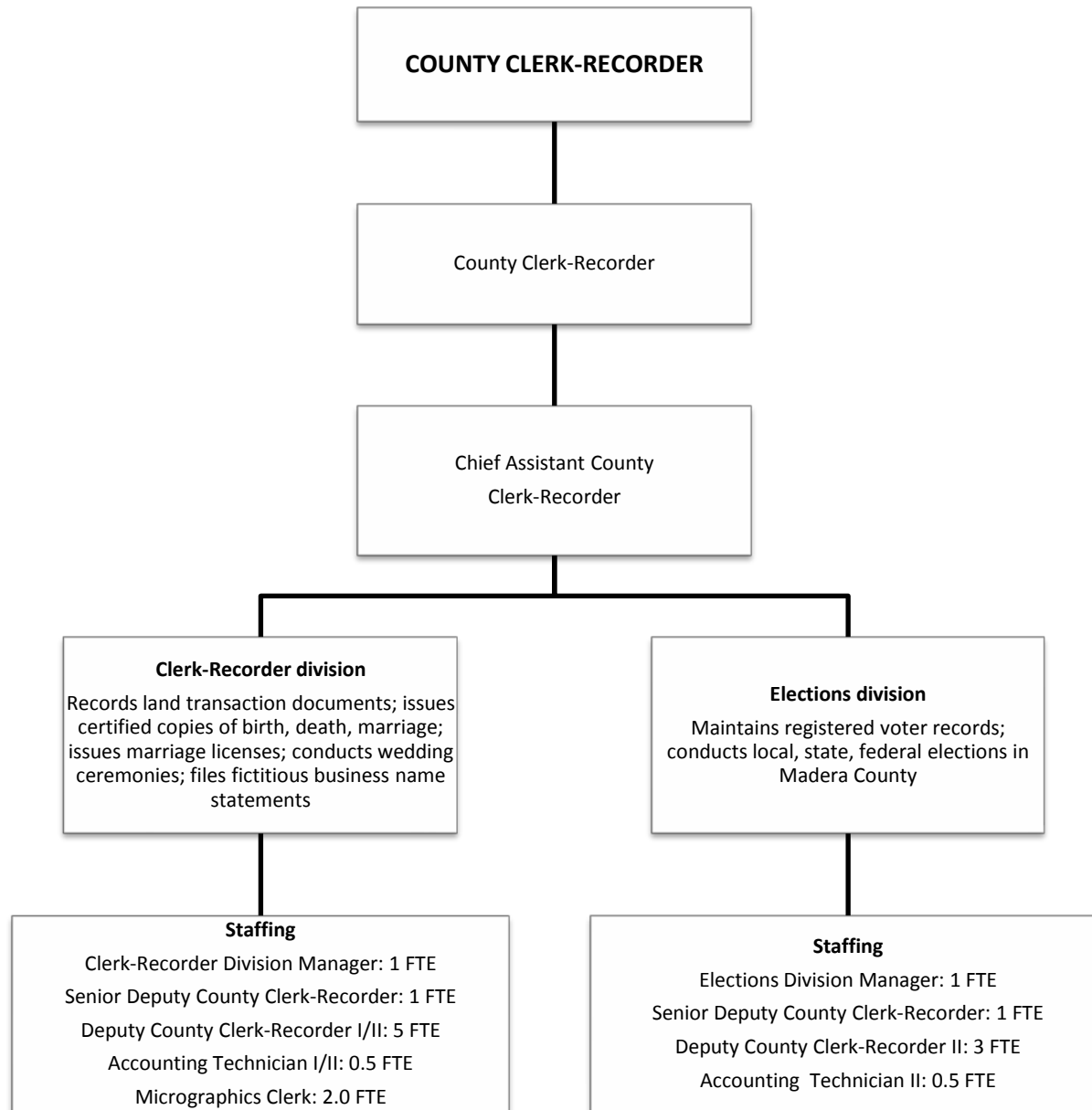
**Total FTE: 53.5**



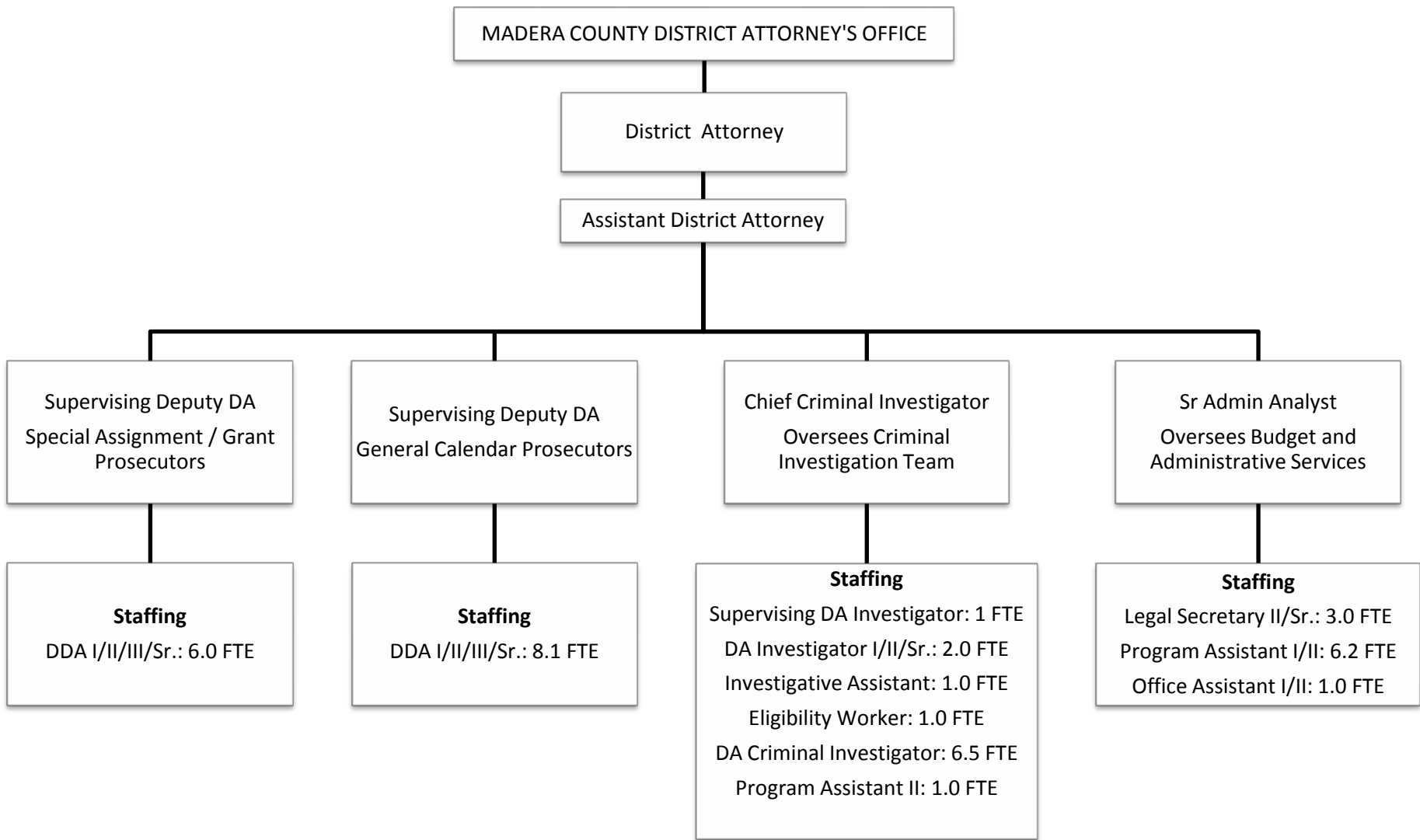
**Total FTE: 29**



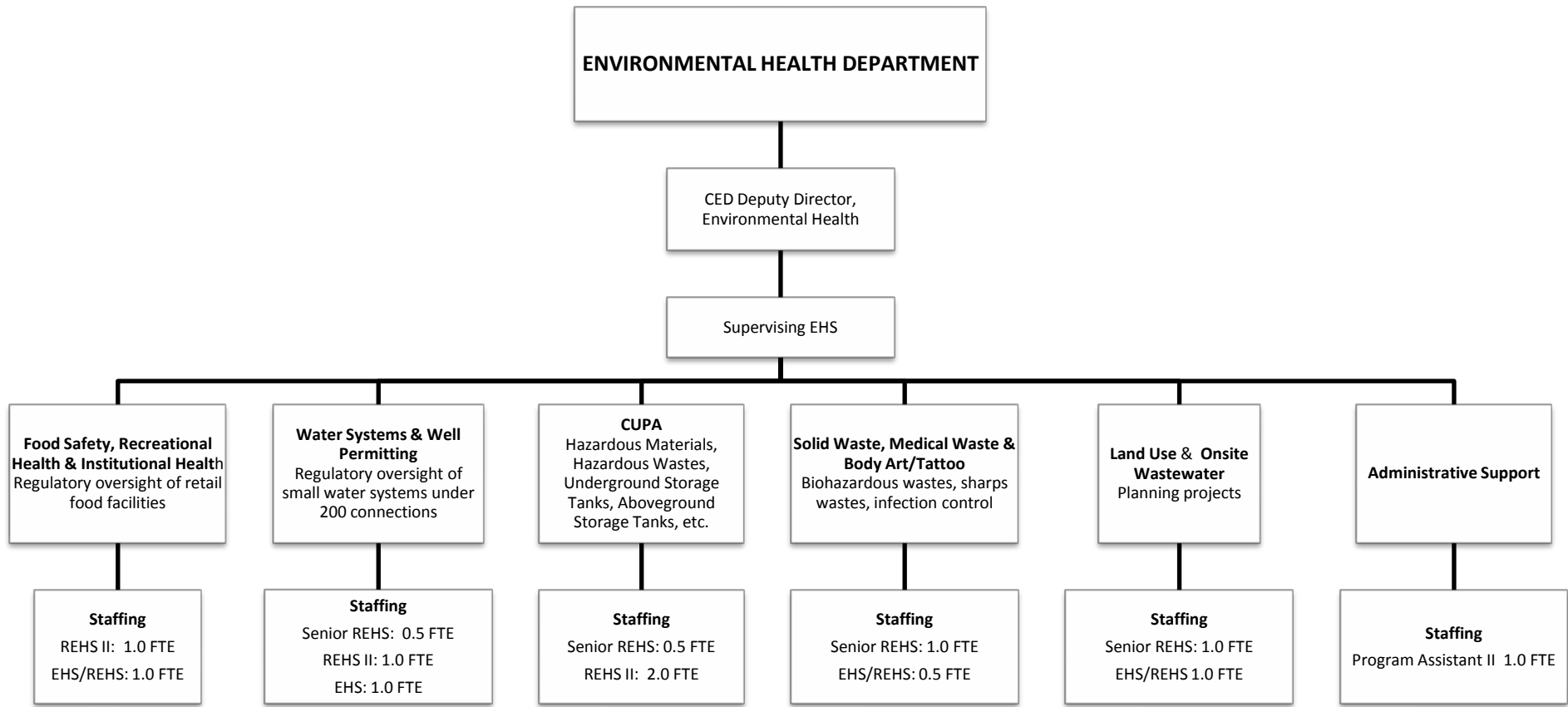
**Total FTE: 122**



**Total FTE: 17**



**Total FTE: 42.76**

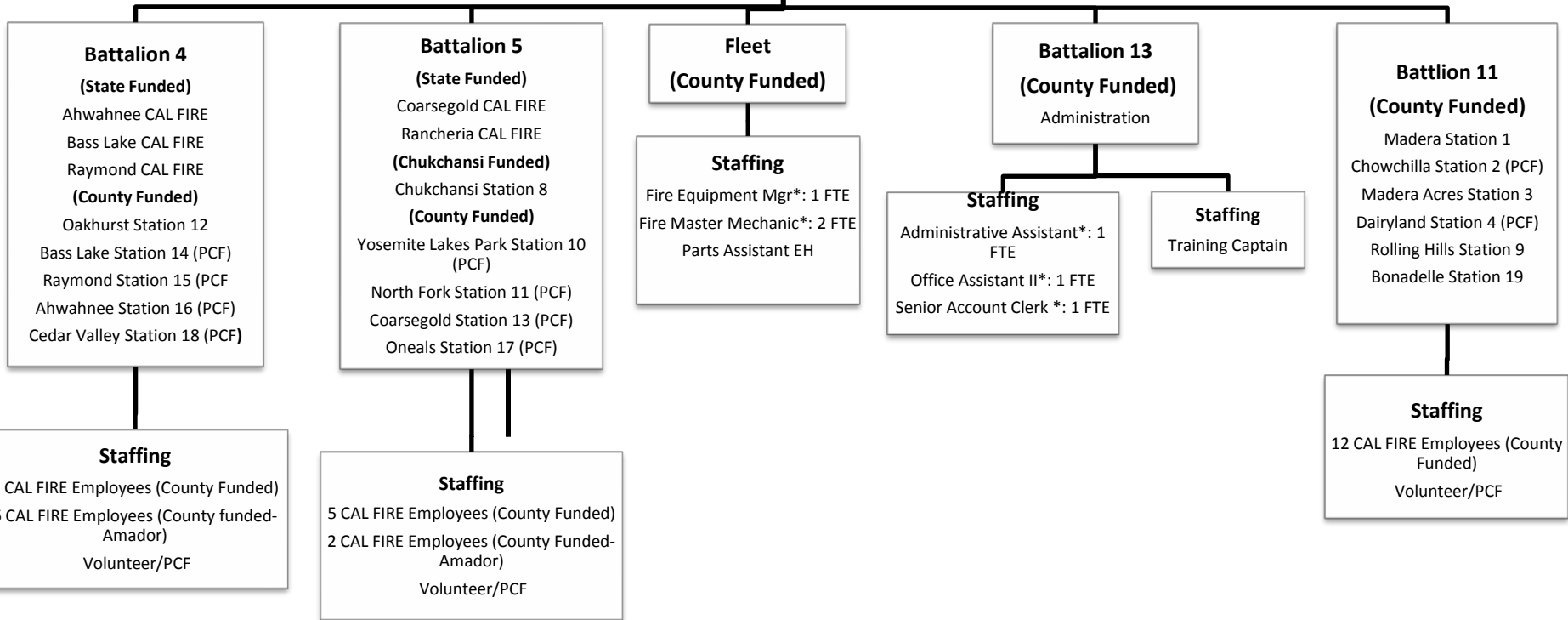


**Total FTE 13.5**

**FIRE DEPARTMENT**

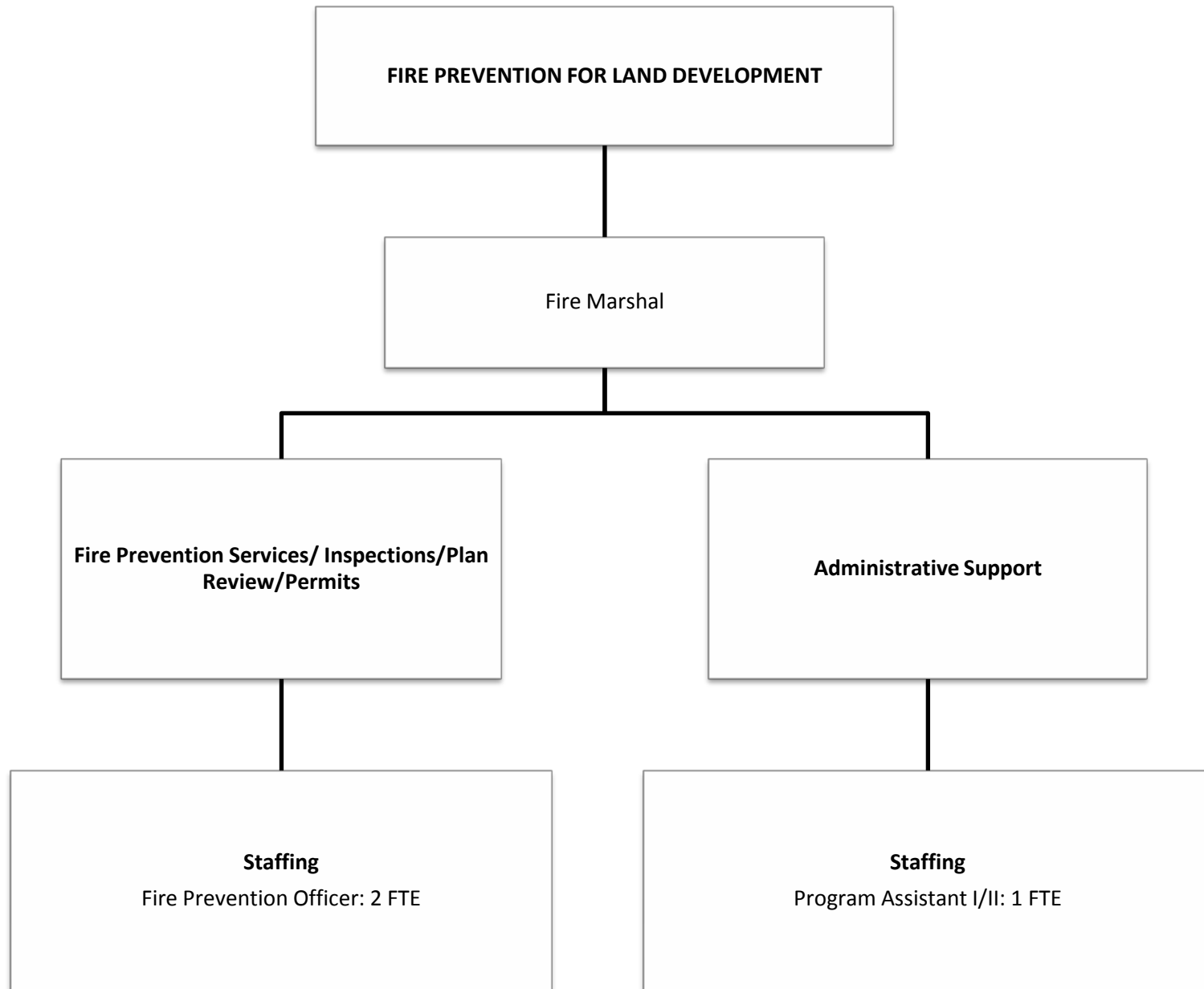
**(State Funded)**  
Fire Chief

**(State Funded)**  
Assistant Chief



**Total FTE: 6\***

**\*Represents County Employees**



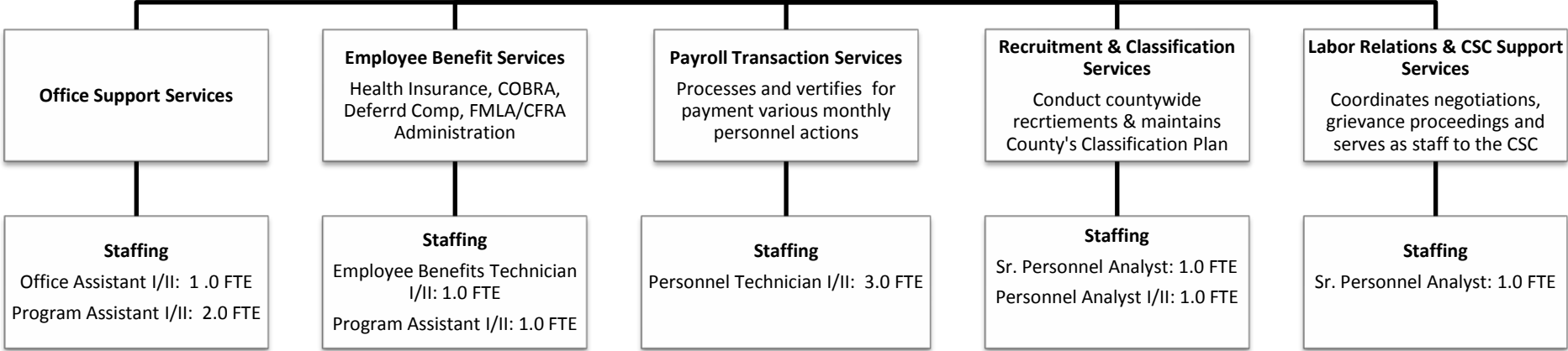
**Total FTE: 4**



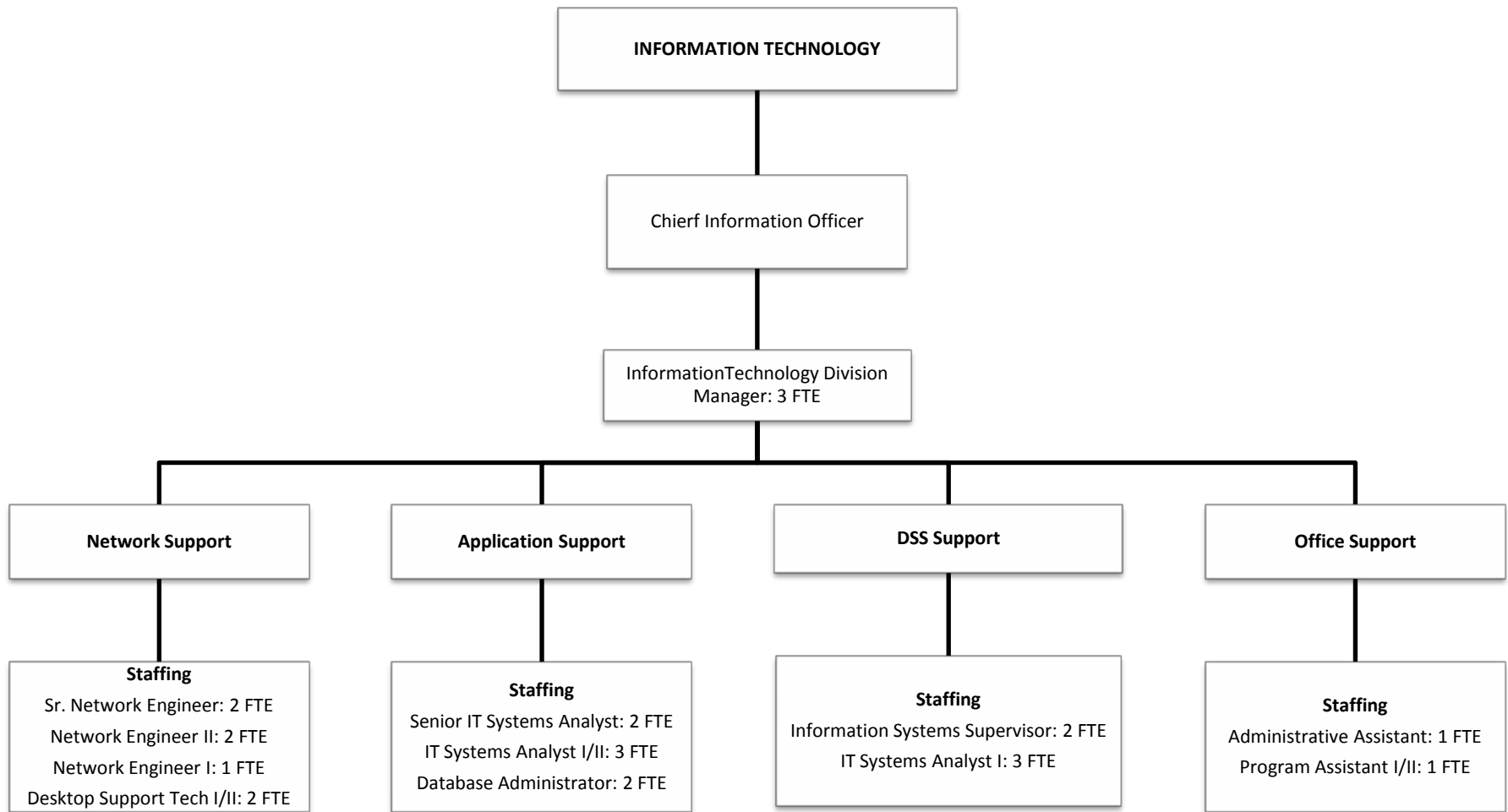
**HUMAN RESOURCES & OPERATIONS  
DIVISION**

Deputy County Administrative  
Officer - HR/Operations

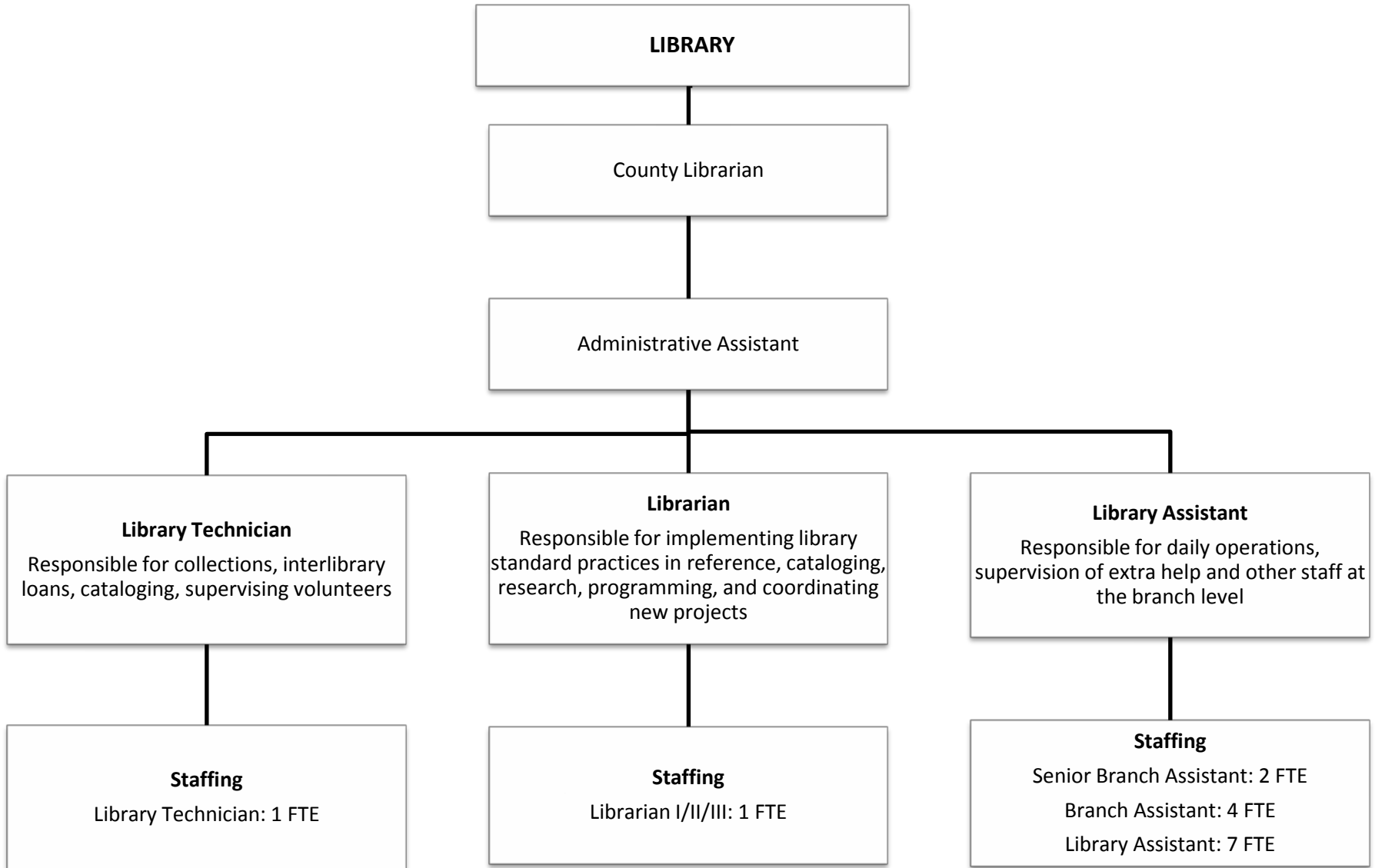
Assistant Director of Human  
Resources/Operations



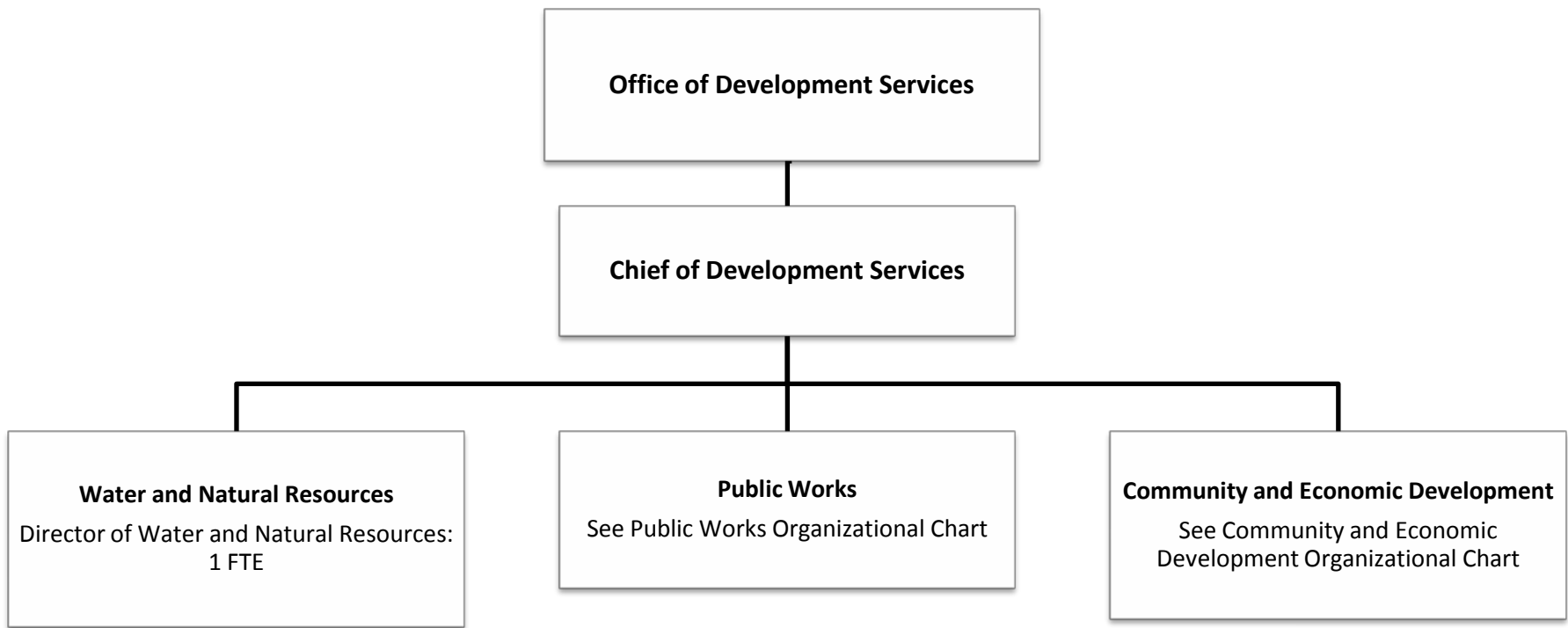
**Total FTE: 13**



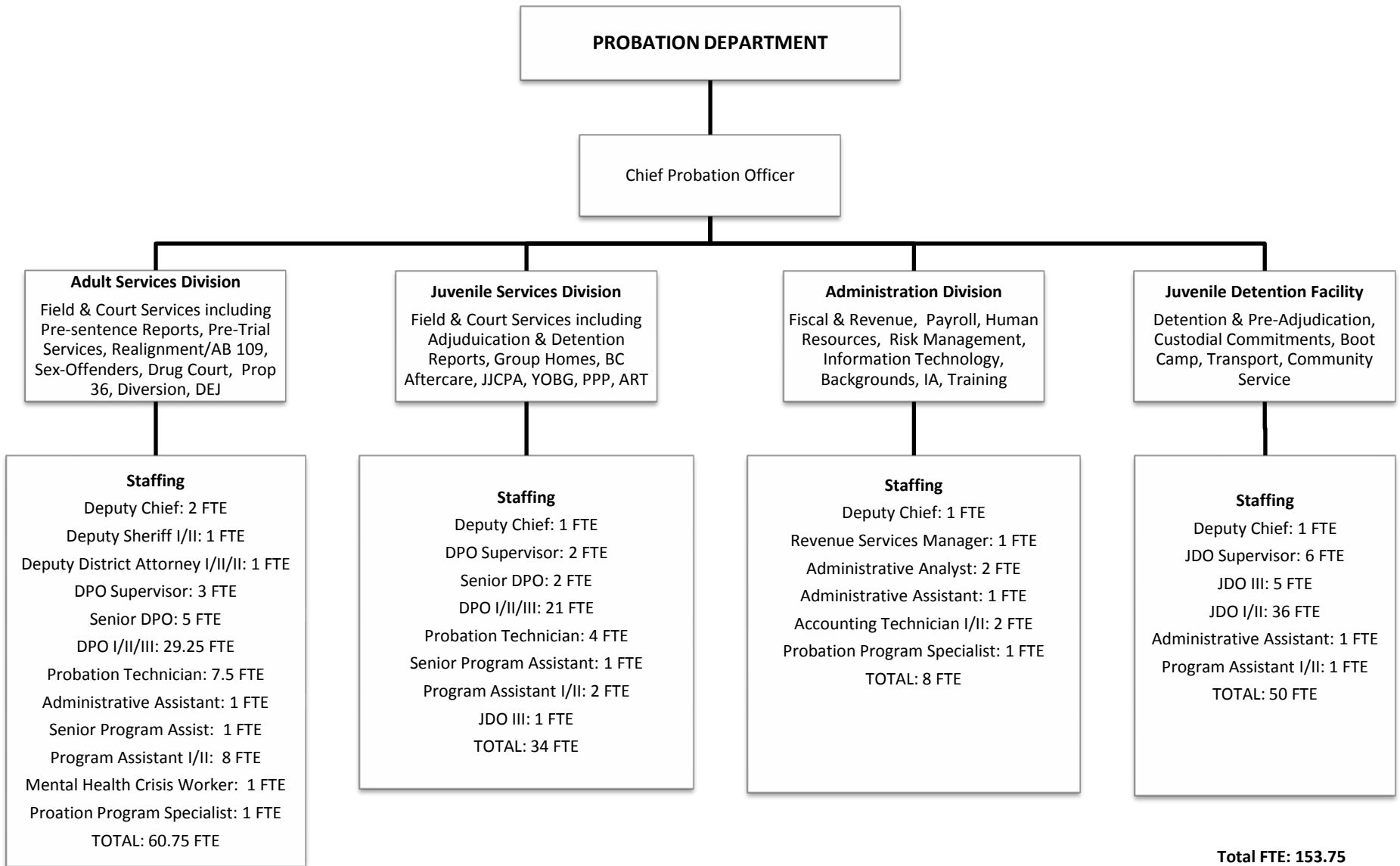
**Total FTE: 25**



**Total FTE: 17**



**Total FTE: 17**



# PUBLIC HEALTH DEPARTMENT

Public Health Director

Deputy Public Health Director-Operations

Deputy Public Health Director-Clinical and Nursing Services

**Administration**  
Provides oversight to department operations, and several grant funded programs such as 1305 and accreditation.

**Laboratory Services**  
Monitors and detects public health threats, ranging from contamination in drinking water to infectious diseases.

**Community Health**  
Provides health education to prevent chronic diseases and builds community capacity for emergency preparedness

**Financial Operations**  
Manages budgets, contracts, billing, accounts payable, & accounts receivables.

**Policy & Planning**  
Coordinates vital statistics, health data, research & policy, and performance management.

**Communicable Disease Control & Prevention**  
Provides health promotion, surveillance, investigation, and control of infectious diseases

**Women Infant & Children Program**  
Provides supplemental foods, health care referrals, and nutrition education for low-income pregnant, breastfeeding, and non-breastfeeding postpartum women, and to infants and children up to age five.

**Maternal Child Adolescent Health**  
Provides case management services to address comprehensive health, physical, psychosocial needs of the maternal, child, & adolescent population. Lead poisonous prevention.

**Children's Medical Services**  
Provides care coordination to assist families with children who have special needs and who meet income criteria. Services include case management, medical appointment scheduling, transportation, assistance and access to diagnostic and treatment services.

**Clinical Services**  
Includes Immunization, Lead, Tuberculosis, Sexually Transmitted Disease, Pre-Employment Physicals, and Senior Clinics.

**Staffing**  
Health Officer: 1 FTE  
Admin Asst: 1 FTE  
Admin Analyst: 1 FTE  
Office Assistant: 1 FTE  
Central Services Worker: 0.5 FTE

**Staffing**  
PH Lab Director: 1 FTE  
PH Microbio: 1 FTE  
PH Lab Tech I/II/Senior: 1 FTE

**Staffing**  
Program Mgr: 2 FTE  
Hlth Ed Specialist: 3 FTE  
Health & Well Asst: 8 FTE  
PH Asst: 1 FTE

**Staffing**  
Account Tech: 4 FTE  
Admin Analyst: 3 FTE  
Sr Account Tech: 2 FTE  
Staff Services Manager: 1 FTE  
Medical Secretary I/II: 1 FTE

**Staffing**  
Epidemiologist: 0.5 FTE  
Program Mgr: 1 FTE  
Health Ed Specialist: 3 FTE  
Health Ed Coord: 2 FTE  
Sr Prog Asst: 1 FTE

**Staffing**  
Epidemiologist: 0.5 FTE  
PH Ed Asst: 1 FTE  
PHN I/II: 1 FTE

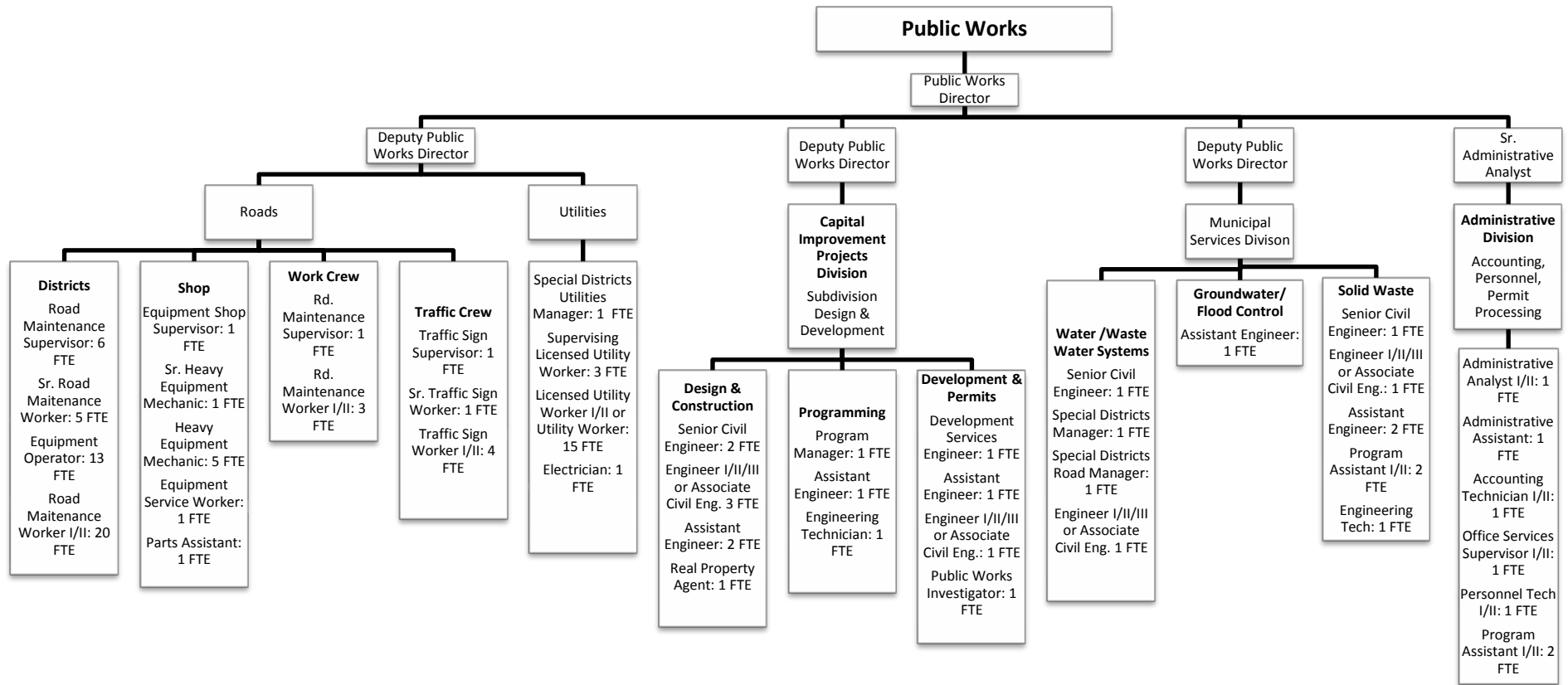
**Staffing**  
Nut Svcs Dir: 1 FTE  
Admin Analyst: 1 FTE  
Reg Dietician: 2 FTE  
Nutritionist: 2 FTE  
Sr Nutrition Asst: 5 FTE  
Nutrition Asst: 16 FTE  
Ph Ed Asst.: 1 FTE

**Staffing**  
Supv PHN: 1 FTE  
Sr PHN: 1 FTE  
Program Mgr: 1 FTE  
PHN : 2 FTE  
PH Ed Asst: 7 FTE  
PH Case Mgmt Asst: 3.5 FTE  
Health Ed Coordinator: 1 FTE

**Staffing**  
Supv PHN: 1 FTE  
Sr. PHN: 1 FTE  
PT/OT Unit Supv: 1 FTE  
PT: 1 FTE  
PHN : 5 FTE  
RN: 1 FTE  
PH Ed Asst: 2 FTE  
Therapy Asst: 1 FTE  
Program Asst: 2 FTE  
Med Sec: 1 FTE  
Admin Asst: 1 FTE  
Account Tech: 1 FTE

**Staffing**  
Program Mgr: 1 FTE  
RN: 1 FTE  
RN/LVN: 1 FTE  
PHN: 4 FTE  
Physician: 1 FTE  
NP: 1 FTE  
PH Ed Asst: 2 FTE  
PH Clin Asst: 1 FTE  
PH Asst: 1 FTE  
Office Asst: 1 FTE

**Total FTE: 122**



**Total FTE: 122**

**SHERIFF-CORONER**

Sheriff

Commander: 2 FTE

**Internal Services Division**

Conducts Background and Internal Affairs Investigations, Operates Laboratory, Secures Evidence, Manages Training Program.

**Staffing**

Lieutenant: 1 FTE  
ID Specialist: 2 FTE  
Property and Evidence Tech: 2 FTE

**Patrol Division**

Provides direct law enforcement services; patrols Bass Lake; provides search/rescue; enforces off-highway vehicle laws

**Staffing**

Sergeants: 11 FTE  
Deputy Sheriff: 48 FTE

**Administrative Services Division**

Provides general services, budgeting; purchasing; grants management; CCW; statutory registration, Court Security Unit, Civil Unit, and Records Unit

**Staffing**

Lieutenant: 1 FTE  
Sergeant: 1 FTE  
Deputy Sheriff: 13 FTE  
Sheriff Business Manager: 1 FTE  
Chief Civil Deputy: 1 FTE  
Administrative Analyst II: 1 FTE  
Community Service Officer: 3 FTE  
Admini Analyst II/Account Tech II: 1 FTE  
Senior Program Assistant: 2 FTE  
Program Assistant: 7.75 FTE  
Administrative Assistant: 1 FTE  
Communication Dispatchers: 9 FTE

**Investigations Division**

Investigates crimes; provides targeted enforcement of narcotic laws; targeted investigations of Ag Crimes

**Staffing**

Sergeants: 1 FTE  
Deputy Sheriff : 7 FTE  
Deputy Probation Officer I/II/III: 1 FTE  
Dep District Attorney I/II/III/Senior: 1 FTE  
Deputy Coroner: 1 FTE  
Program Assistant: 1 FTE

**Emergency Services Division**

Provides advanced planning and management support during crisis operations; schedules training; ; provides dispatch services to all divisions.

**Staffing**

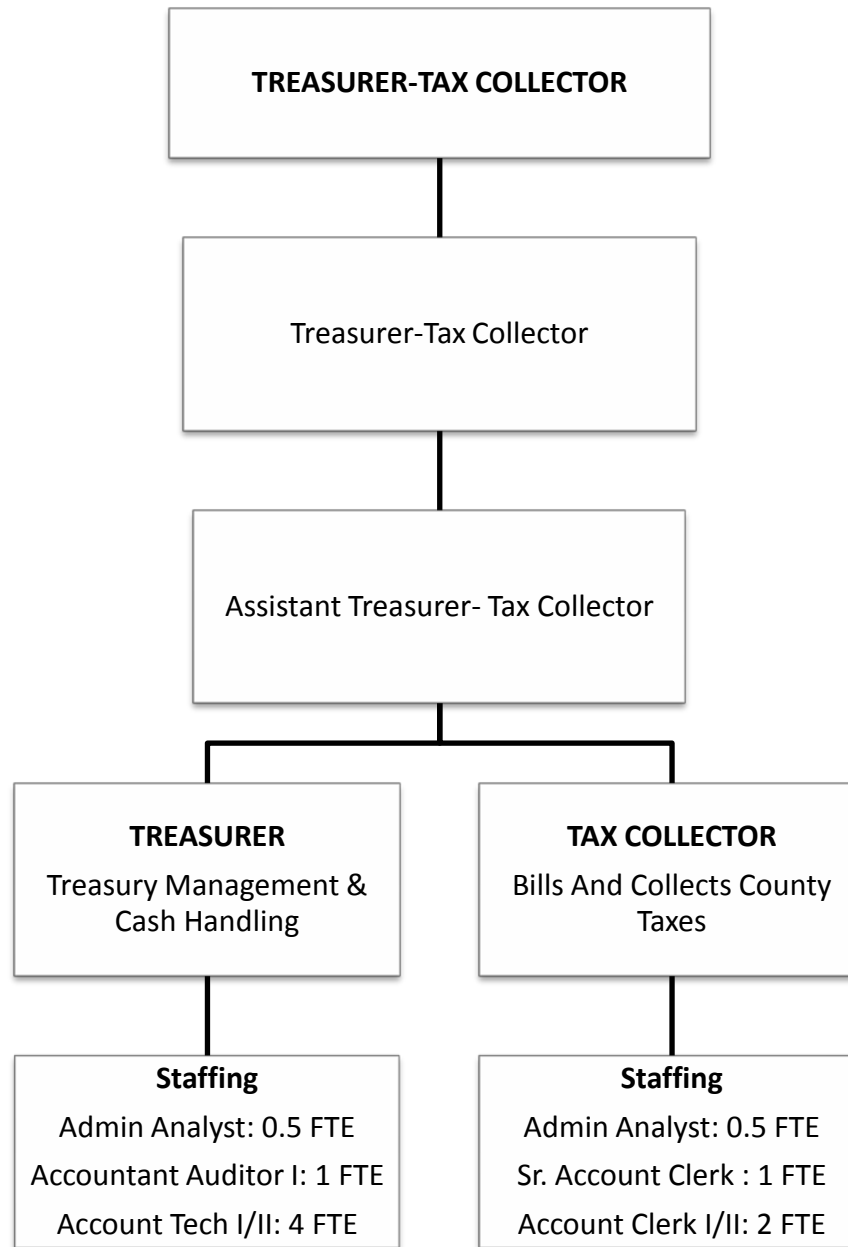
Sergeant: 1 FTE  
Community Service Officer: 1 FTE  
Deputy Sheriff: 1 FTE  
Sheriff Public Information Officer: 1 FTE  
Program Assistant: 1 FTE

**Total FTE: 110.75**

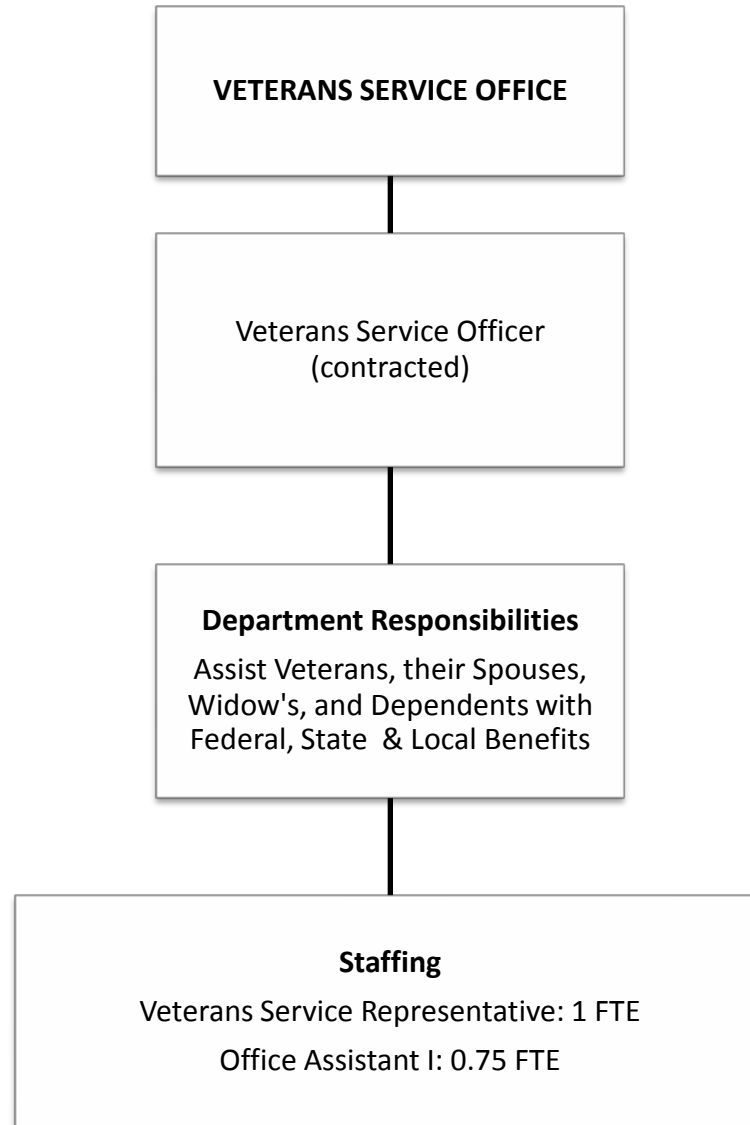




**Total FTE: 336**



**Total FTE: 11**



**Total FTE: 1.75**