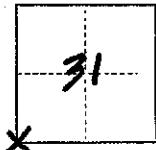


CORNER RECORD

COUNTY OF Madera T. 8S R. 22E 23E MD MERIDIAN CALIFORNIA

CORNER TYPE: GOV'T. CORNER MEANDER RANCHO CONTROL OTHER

CORNER IDENTIFICATION — DATE OF VISIT 1-5-75 19__



SW COR SEC 31, T8S, R23E, MDB&M

CORNER — LEFT AS FOUND FOUND AND TAGGED REESTABLISHED OBLITERATED CORNER REBUILT

PHYSICAL DESCRIPTION OF CORNER FOUND; EVIDENCE AND METHOD USED TO IDENTIFY OR REESTABLISH

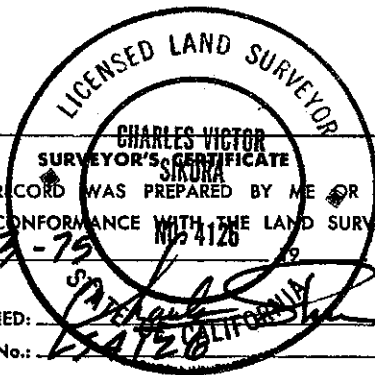
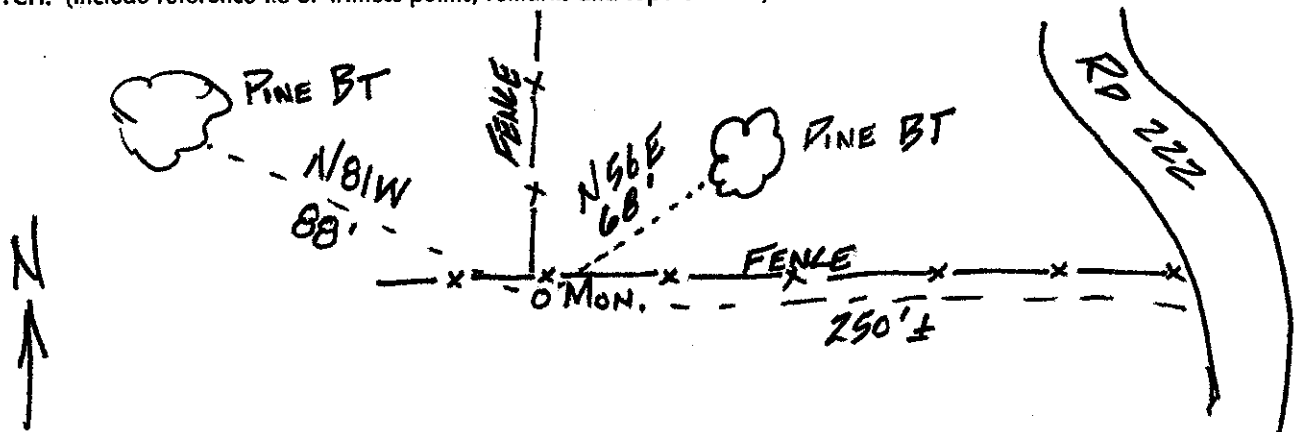
Found GLO BRASS CAP

SC
T8S
R22E | R23E
536 | 531
1922

PHYSICAL DESCRIPTION OF MONUMENTS REBUILT OR PERPETUATED

CALIFORNIA COORDINATE SYSTEM ORDER: FIRST SECOND THIRD
 STATIONS USED: NGS (USC & GS) STATE COUNTY OTHER STATION _____ STATION _____
 ZONE _____ ELEVATION _____ NORTHINGS (Y) _____ EASTINGS (X) _____

SKETCH: (Include reference tie or witness points, remarks and topo of area)



THIS CORNER RECORD WAS PREPARED BY ME OR UNDER MY DIRECTION IN CONFORMANCE WITH THE LAND SURVEYORS ACT ON 2-3-75 MP 4128

SIGNED: _____
 L.S. or R.C.E. No.: 4128

SEAL

COUNTY SURVEYOR'S CERTIFICATE

THE CORNER RECORD WAS RECEIVED 5-23 19 75
 AND EXAMINED AND FILED 5-29 19 75

BY: A O Krato
 TITLE: County Engineer

DOCUMENT No. 75-18-03

STATEMENT ON BACK OF SHEET

YES NO