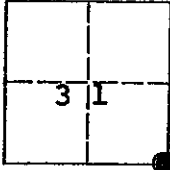


CORNER RECORD

COUNTY OF MADERA TOWNSHIP 8 SOUTH, RANGE 23 EAST, M.D.B.&M. CALIFORNIA

CORNER TYPE: GOV'T. CORNER [X] MEANDER [] RANCHO [] CONTROL [] OTHER []

CORNER IDENTIFICATION - DATE OF VISIT: JUNE 19 80



SOUTHEAST CORNER SECTION 31 8/23.

CORNER - LEFT AS FOUND [X] FOUND AND TAGGED [] REESTABLISHED OBLITERATED CORNER [] REBUILT []

PHYSICAL DESCRIPTION OF CORNER FOUND; EVIDENCE AND METHOD USED TO IDENTIFY OR REESTABLISH

Found 1 1/2" I.D.I.P. with U.S.G.L.O. Brass Cap (1922) in cairn up 0.6'

PHYSICAL DESCRIPTION OF MONUMENTS REBUILT OR PERPETUATED

CALIFORNIA COORDINATE SYSTEM ORDER: FIRST [] SECOND [] THIRD []

STATIONS USED: NGS (USC & GS) [] STATE [] COUNTY [] OTHER [] STATION _____ STATION _____

ZONE _____ ELEVATION _____ NORTHINGS (Y) _____ EASTINGS (X) _____

SKETCH: (INCLUDE REFERENCE TIE OR WITNESS POINTS, REMARKS AND TOPO OF AREA)

2 o d nail in ground N 52°40'02"E, 98.04 feet

Copied from Record of Survey for Janet Wheeler by Douglas Breadahl L.S. 4509

SURVEYOR'S CERTIFICATE

THIS CORNER RECORD WAS PREPARED BY ME OR UNDER MY DIRECTION IN CONFORMANCE WITH THE LAND SURVEYOR'S ACT ON

_____ 19 ____.

SIGNED: _____

L.S. or R.C.E. No: _____

SEAL

COUNTY SURVEYOR'S CERTIFICATE

THE CORNER RECORD WAS RECEIVED _____ 19 ____

AND EXAMINED AND FILED _____ 19 ____.

BY: _____

TITLE: _____

DOCUMENT No: _____ STATEMENT ON BACK OF SHEET: YES [] NO []