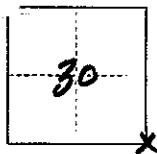


CORNER RECORD

COUNTY OF MADERA T. 8S R. 23E MD MERIDIAN CALIFORNIA

CORNER TYPE: GOV'T. CORNER MEANDER RANCHO CONTROL OTHER

IDENTIFICATION — DATE OF VISIT 8-11 1975



SE COR., SEC 30, T8S, R23E, MDB&M

CORNER — LEFT AS FOUND FOUND AND TAGGED REESTABLISHED OBLITERATED CORNER REBUILT

PHYSICAL DESCRIPTION OF CORNER FOUND; EVIDENCE AND METHOD USED TO IDENTIFY OR REESTABLISH

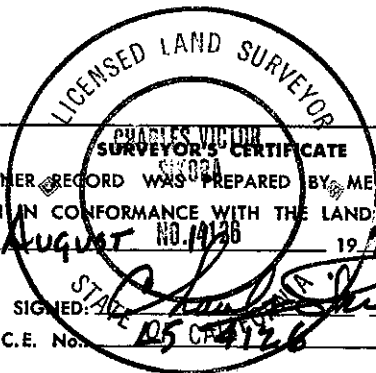
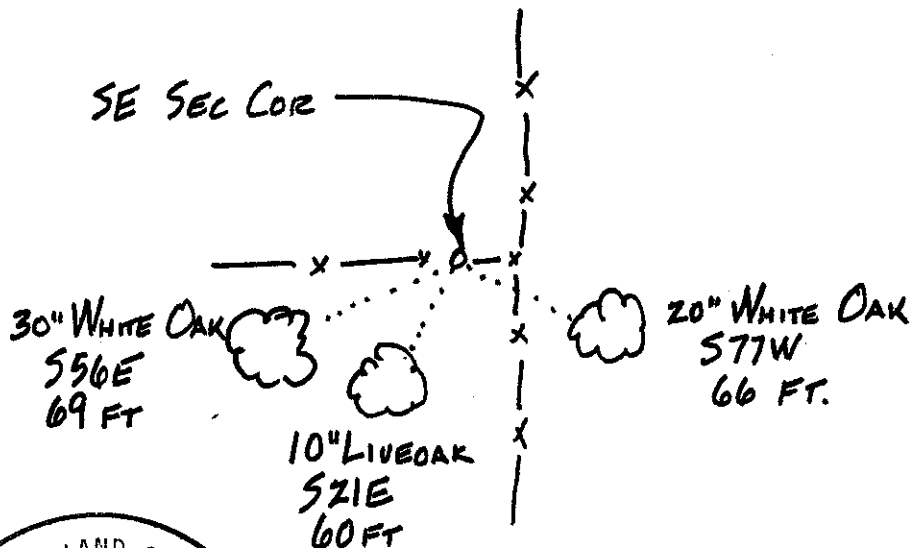
FOUND 1 3/4" IRON PIPE, NO I.D.

PHYSICAL DESCRIPTION OF MONUMENTS REBUILT OR PERPETUATED

PLACED 2" BRASS CAP WITH I.D., STAMPED LS4126

CALIFORNIA COORDINATE SYSTEM ORDER: FIRST SECOND THIRD
STATIONS USED: NGS (USC & GS) STATE COUNTY OTHER STATION _____ STATION _____
NE _____ ELEVATION _____ NORTHINGS (Y) _____ EASTINGS (X) _____

SKETCH: (Include reference tie or witness points, remarks and topo of area)



THIS CORNER RECORD WAS PREPARED BY ME OR UNDER MY DIRECTION IN CONFORMANCE WITH THE LAND SURVEYORS ACT ON AUGUST NO. 1926 1975
SIGNED: [Signature]
L.S. or R.C.E. No. 85 CP 4126

COUNTY SURVEYOR'S CERTIFICATE
THE CORNER RECORD WAS RECEIVED Aug 11 1975
AND EXAMINED AND FILED Aug 11 1975
BY: County A.D. Grote
TITLE: County Engineer
DOCUMENT No. 75-26-02

STATEMENT ON BACK OF SHEET

YES NO