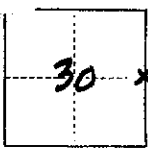


CORNER RECORD

COUNTY OF MADERA T. 8S R. R23E MD MERIDIAN CALIFORNIA

CORNER TYPE: GOV'T. CORNER MEANDER RANCHO CONTROL OTHER

IDENTIFICATION — DATE OF VISIT 8-11 19 75



30 x E 1/4 COR SEC 30, T 8S, R 23E, MDB&M

CORNER — LEFT AS FOUND FOUND AND TAGGED REESTABLISHED OBLITERATED CORNER REBUILT

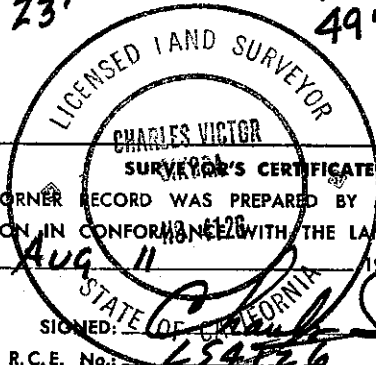
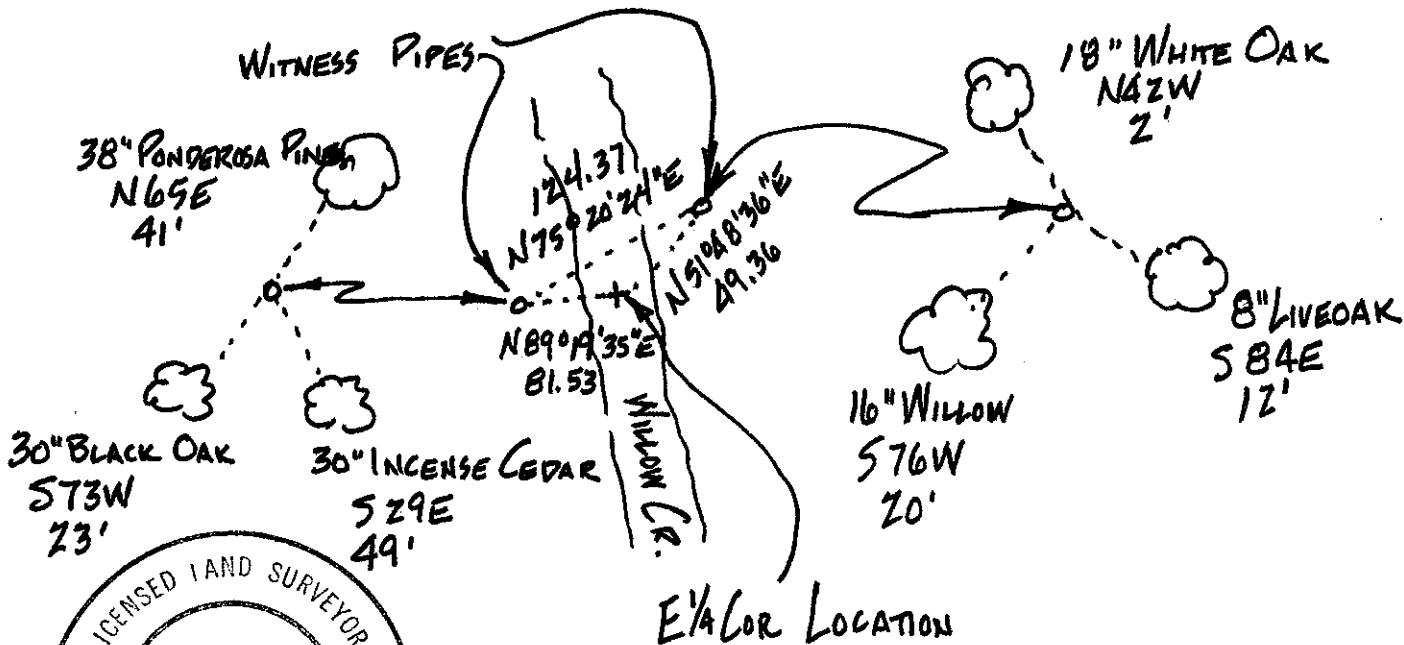
PHYSICAL DESCRIPTION OF CORNER FOUND; EVIDENCE AND METHOD USED TO IDENTIFY OR REESTABLISH

CORNER LIES IN WILLOW CREEK. FOUND TWO WITNESS PIPES AS RECORDED ON R/S MAP IN BK. 17, PG. 64. WITNESS PIPES ARE 3/4" IRON PIPE TAGGED LS 2229

PHYSICAL DESCRIPTION OF MONUMENTS REBUILT OR PERPETUATED

CALIFORNIA COORDINATE SYSTEM ORDER: FIRST SECOND THIRD
 STATIONS USED: NGS (USC & GS) STATE COUNTY OTHER STATION _____ STATION _____
 NE _____ ELEVATION _____ NORTHINGS (Y) _____ EASTINGS (X) _____

SKETCH: (Include reference tie or witness points, remarks and topo of area)



THIS CORNER RECORD WAS PREPARED BY ME OR UNDER MY SUPERVISION IN CONFORMANCE WITH THE LAND SURVEYORS ACT ON AUG 11 19 75
 SIGNED: [Signature]
 L.S. or R.C.E. No.: LS 4726

COUNTY SURVEYOR'S CERTIFICATE
 THE CORNER RECORD WAS RECEIVED Aug 11 19 75
 AND EXAMINED AND FILED Aug 11 19 75
 BY: [Signature]
 TITLE: County Engineer
 DOCUMENT No. 75-26-04

STATEMENT ON BACK OF SHEET YES NO