



March 2024 | Vol. 1 | Issue 3

Madera County E-Biz



*The
Perfect
Location*

[Visit Website](#)

News about local businesses is always welcome!

Madera County EDC assists with business recruitment, expansion, and retention with a particular focus on new job creation. We provide free and confidential assistance to businesses looking to expand or relocate to Madera County.

A Message from the Director

Madera County and the city's of Chowchilla and Madera are a great place to do business for several reasons. The county has a strong and diversifying economy, with a range of industries including agriculture, manufacturing, and healthcare, and a vibrant tourism economy as a gateway to Yosemite National Park.

Madera also has a strategic location in the heart of California, making it a hub for transportation and logistics.

Additionally, we offer a supportive business environment with resources and incentives for entrepreneurs and small businesses. With a growing population and a thriving business community, Madera is an ideal location for companies looking to expand and succeed.

Please contact us if you need the following:

- Business/Project Assistance
- Business Advice
- Business Incentive Information
- Small Business Gap Financing
- Industrial & Commercial Site Selection
- Site Tours
- Demographics
- Quarterly Industrial Vacancy Reports
- Information on Workforce Programs
- General Information or Questions about Madera County

Madera County EDC (559) 675-7768
2425 West Cleveland Ave., Ste. 101, Madera CA 93637

www.maderacountyedc.com
info@maderacountyedc.com

Find us on



Local Stats

Madera County Unemployment Rate

[Click to view the graph](#)

December 2023

- Madera County 7.9%
- Central Valley (Avg.) 8.2%
- California 5.1%

*Central Valley average includes San Joaquin, Stanislaus, Merced, Madera, Fresno, Tulare, Kings & Kern counties.

Source: www.labormarketinfo.edd.ca.gov

Featured Property



Industrial Land- 9 acres

This prime location offers immense potential for businesses looking to establish themselves in Madera. With its close proximity to major transportation routes and key developments, it presents an ideal setting for industrial operations.

[More Information](#)

[View More Madera County EDC Listings](#)

Madera Industrial WHSE Partners

Now Leasing

[More Information](#)



S Granada Drive, Madera, CA

For Sale

[More Information](#)



Fig Tree Plaza Chowchilla

Lots Available For Sale

[More Information](#)

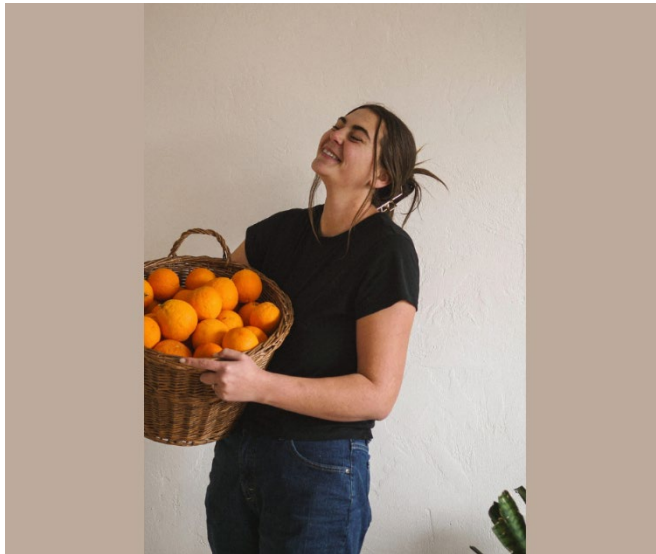


News

Madera County opens up new fire station

Madera County opened a new fire station on Friday, celebrating with a ribbon-cutting ceremony.

[Read More](#)



Rooted Farmers Market Collective-A Vision Becomes Reality

Owner Rose Martin has scheduled the grand opening of Rooted The Farmers Market Collective for Friday, March 1, 2024. This culminates a dream . . .

[Read More](#)



Chowchilla dedicates time capsule to future generations

The Madera Tribune From left, Chowchilla City Mayor Pro Tem Waseem Ahmed, Chowchilla Mayor Kelly Smith, and Chowchilla City Councilman, Jeff Troost burying a Time Capsule at Veterans Memorial Park to be opened in 50 years.

[Read More](#)



New sheriff's logistics facility opens in Madera County

MADERA COUNTY, Calif (KSEE/KGPE) - A new sheriff's logistics facility opened in Madera County on Tuesday. The ribbon-cutting ceremony was held on Tuesday morning at the building on Liberty Drive in Oakhurst. Officials say the 16,000 square feet building will serve as an emergency operations center for law enforcement, firefighters and first responders when disaster [...]

[Read More](#)



Camarena Health opens in Chowchilla

The Madera Tribune Dignitaries and officials join Camarena Health representatives for a ribbon cutting ceremony on Wednesday for Camarena Health's new Urgent Care facility in Chowchilla. CHOWCHILLA - Camarena Health celebrated the opening of its

newest Urgent Care with a ribbon cutting ceremony and facility tours open to invited guests and media on Wednesday.

[Read More](#)



Station Casinos Secures Approval for Partnership in North Fork Casino Project

Station Casinos gets the nod for partnership in California's North Fork Project, signaling a boost for tribal gaming.

[Read More](#)



Building California's Future

The biggest investment in California infrastructure in a generation. Funding for what your community needs: a cleaner environment, safer roads, more broadband, and more good-paying jobs

[Read More](#)



California offered \$57 million to help this hospital reopen. Now, it finally has a plan

Bankrupt Madera Community Hospital has a court-approved reopening plan, but some California lawmakers are rooting for a different proposal.

[Read More](#)



Small Business Loan/Grant Programs

The City of Chowchilla has Funding available through the Community Development Block Grant Coronavirus Aid (CDBG-CV) is a federally funded program. CDBG-CV

funds may be used to secure economic opportunities for low- and moderate-income persons. CDBG-CV funds are targeted at businesses in the City that have the highest adverse impact as a result of the Coronavirus.

[Read More](#)



2024 Mountain Community Job Fair

SCHEDULE
Date: March 21st 2024
Time: 2:00pm-6:00pm
Location: Oakhurst Community Center
39800 Road 425B
Oakhurst, CA

What to Prepare For...

- Bring in Copies of 'RESUME'
- On the Spot Interviews
- Prepared to complete Applications in person
- Register on Caljobs.ca.gov
- Open to all job seeking opportunities
- Dress to Impress

This project is fully funded by a US Department of Labor Workforce Innovation and Opportunity Act (WIOA) grant allocation totaling \$2,379,746 and is an Equal Opportunity Employer/Program. Auxiliary aids and services available upon request to individuals with disabilities.

For more information, please feel free to contact:
Jorge Espinosa (559) 662-4540/ jespinosa@maderaworkforce.org
Erick Flores (559) 662-4528/ eflores@maderaworkforce.org

WORKFORCE ASSISTANCE CENTER

Mountain Community Job Fair 2024 | Madera County Workforce Assistance Center

Workforce Development Board of Madera County 2037 W. Cleveland Avenue Madera, CA 93637
Workforce Assistance Center: 559-662-4500
Workforce Development Board: 559-662-4589
California Relay System: 711
Fax: (559) 673-1794
Email: mworkforce@maderaworkforce.org

[Read More](#)



HOUSING REHABILITATION PROGRAM *Chowchilla*

The program is designed to provide financing to repair income eligible and owner-occupied homes in need of essential health and/or safety repairs. The Housing Rehabilitation Program is funded by the State Department of Housing and Community Development Grant Programs. Self-Help Enterprises contracts with the City to determine eligibility and to perform the repairs.

Some common home repairs include: roofing, plumbing, electrical, heating, cooling, insulation, foundation, windows, and handicap accessible modifications.

Financing & Eligibility:

- Families are thoroughly screened to determine eligibility
- Financial assistance is provided through 0% interest deferred payment loans
- Deferred payment loans require no monthly payments for 30 years
- Loans are due and payable upon sale, change of title or change of use (e.g. from owner-occupied to renter-occupied), or in 30 years
- The home must be owner-occupied and located within City limits.



[Read More](#)

GOT EMPLOYEE DILEMMAS?

We have answers!

Call the no-cost Madera WDB Human Resource (HR) Hotline to get advice on the proper and legal way to handle employee concerns before they become painful!



[HR Hotline](#)

The Workforce Development Board of Madera County has partnered with the California Employers Association to provide Madera County Employers with a **NO-COST HR HOTLINE!**



WORKFORCE ASSISTANCE CENTER

America's JobCenter of California



[Workforce Assistance Center](#)

The Workforce Assistance Center is a partnership of community agencies specializing in meeting a variety of needs from training to job placement to public housing. Our goal is to provide a community

resource center that will make it easier for customers to obtain information about various programs and services.

Upcoming Events

March

1

Western Stampede

Time: 10:00 am

Robertson Boulevard

March

21

Mountain Community Job Fair

Time: 2:00 pm-6:00 pm

Oakhurst Community Center
39800 Road 425B
Oakhurst, CA 93644

Economic Development

Why Communities Invest in Economic Development



Benefits of Economic Development Include:

- Maintain, increase, & diversify tax base
- Increase revenues faster than cost of municipal services increase
- Business Retention
- Economic vitality and diversification for commercial and industrial areas
- Maximize property through highest & best use
- Create and retain jobs, increase per capita income
- Self-sufficiency in the face of state and federal budget issues
- Recognition of local products
- Beneficial partnerships between local governments, businesses, & community members

Resources

[Fresno County SCORE](#)

[U.S. Small Business Administration, Fresno Office](#)

[Valley Community SBDC](#)

[Cen Cal Business Finance Group](#)

[MCEDC Revolving Loan Program](#)

[Access Plus Capital](#)



[Annual Report
2022-2023](#)



[Yosemite Sierra](#)

Thank you for reading our newsletter!

**Darren Rose, Executive Director
Madera County EDC**



Madera County Economic
Development Commission
2425 W. Cleveland Ave
#101
Madera CA 93637
559-675-7768

[Visit our Website](#)

