

CORNER RECORD

R/S

COUNTY OF Madera T. 8S R. 23E M.D. MERIDIAN CALIFORNIA
CORNER TYPE: GOV'T. CORNER MEANDER RANCHO CONTROL OTHER
R IDENTIFICATION — DATE OF VISIT 9-20-75 1975



W 1/4 COR SEC 28, T8S, R23E, MDB&M

CORNER — LEFT AS FOUND FOUND AND TAGGED REESTABLISHED OBLITERATED CORNER REBUILT

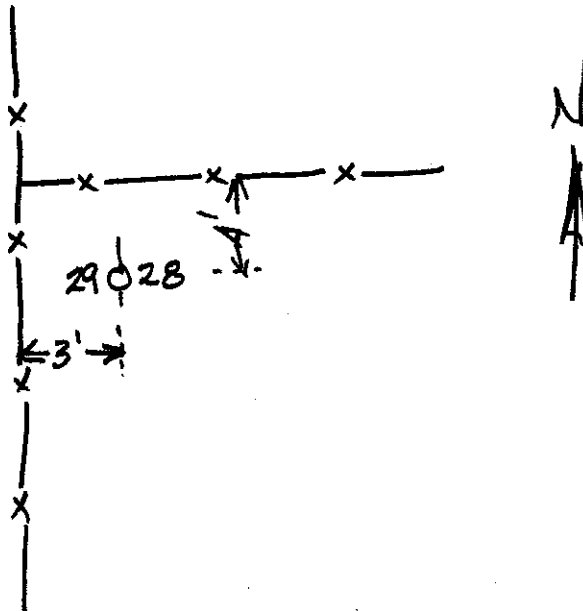
PHYSICAL DESCRIPTION OF CORNER FOUND; EVIDENCE AND METHOD USED TO IDENTIFY OR REESTABLISH

FOUND 2" IRON PIPE IN ROCK MOUND BY W.H. MANLEY, LS 2360

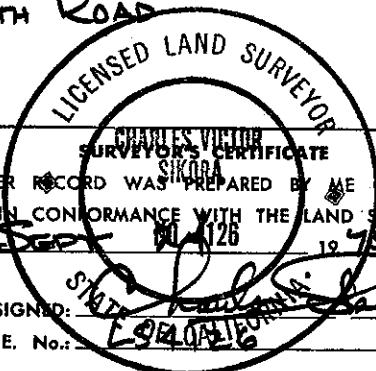
PHYSICAL DESCRIPTION OF MONUMENTS REBUILT OR PERPETUATED

CALIFORNIA COORDINATE SYSTEM ORDER: FIRST SECOND THIRD
STATIONS USED: NGS (USC & GS) STATE COUNTY OTHER STATION _____ STATION _____
ELEVATION _____ NORTHINGS (Y) _____ EASTINGS (X) _____

SKETCH: (Include reference tie or witness points, remarks and topo of area)



NOTE: THIS CORNER IS BETWEEN WHISKY CREEK AND THE HOME OF HOLLIS BACH ON THE MAMMOTH ROAD



CORNER RECORD WAS PREPARED BY ME OR UNDER MY DIRECTION IN CONFORMANCE WITH THE LAND SURVEYORS ACT ON SEPT 26 1975
SIGNED: [Signature]
L.S. or R.C.E. No.: LS 2360

COUNTY SURVEYOR'S CERTIFICATE
THE CORNER RECORD WAS RECEIVED OCT. 3 1975
AND EXAMINED AND FILED OCT. 7 1975
BY: A. G. [Signature]
TITLE: County Engineer
DOCUMENT No. 75-32-01

STATEMENT ON BACK OF SHEET YES NO