

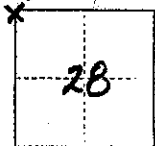
CORNER RECORD

2/s

COUNTY OF Madera T. 8S R. 23E MD MERIDIAN CALIFORNIA

CORNER TYPE: GOV'T. CORNER  MEANDER  RANCHO  CONTROL  OTHER

IDENTIFICATION — DATE OF VISIT 9-20-75 19\_\_



N.W. COR. SEC 28, T8S, R23E, MDB&M

CORNER — LEFT AS FOUND  FOUND AND TAGGED  REESTABLISHED OBLITERATED CORNER  REBUILT

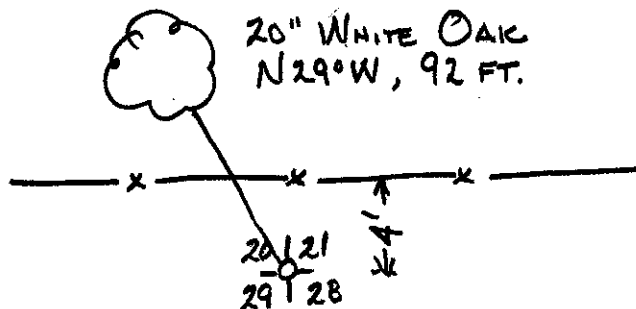
PHYSICAL DESCRIPTION OF CORNER FOUND; EVIDENCE AND METHOD USED TO IDENTIFY OR REESTABLISH

FOUND 2" IRON PIPE WITH BRASS CAP BY W.O. GENTRY, LS2737

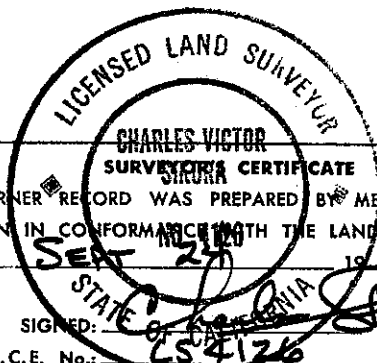
PHYSICAL DESCRIPTION OF MONUMENTS REBUILT OR PERPETUATED

CALIFORNIA COORDINATE SYSTEM ORDER: FIRST  SECOND  THIRD   
STATIONS USED: NGS (USC & GS)  STATE  COUNTY  OTHER  STATION \_\_\_\_\_ STATION \_\_\_\_\_  
ELEVATION \_\_\_\_\_ NORTHINGS (Y) \_\_\_\_\_ EASTINGS (X) \_\_\_\_\_

SKETCH: (Include reference tie or witness points, remarks and topo of area)



NOTE: THIS CORNER IS IN OPEN PASTURE AND IS ACCESSABLE VIA RANCH ROAD THROUGH THE RANCH OF RICHARD SCHLICHTING



CORNER RECORD WAS PREPARED BY ME OR UNDER MY DIRECTION IN CONFORMANCE WITH THE LAND SURVEYORS ACT ON SEP 27 1975 SIGNED: \_\_\_\_\_ L.S. or R.C.E. No.: LS 4126

COUNTY SURVEYOR'S CERTIFICATE THE CORNER RECORD WAS RECEIVED OCT. 3 1975 AND EXAMINED AND FILED OCT. 7 1975 BY: A. Grote TITLE: County Engineer DOCUMENT No. 75-32-02

STATEMENT ON BACK OF SHEET

YES  NO