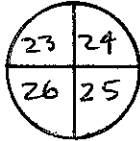


CORNER RECORD

COUNTY OF MADERA T. 8 S. R. 23 E. Mt. Diablo MERIDIAN CALIFORNIA

CORNER TYPE: GOVT. CORNER MEANDER RANCHO CONTROL OTHER

CORNER IDENTIFICATION — DATE OF VISIT 5/4/84 19__



CORNER — LEFT AS FOUND FOUND AND TAGGED REESTABLISHED OBLITERATED CORNER REBUILT

PHYSICAL DESCRIPTION OF CORNER FOUND; EVIDENCE AND METHOD USED TO IDENTIFY OR REESTABLISH

FOUND $3/4$ " X 24" I.O.I.P. TAGGED L.S. 4509 SET IN 1978 (PER PARCEL MAP #1606 BK. 25 P. 32) IN ORIGINAL ROCK MOUND

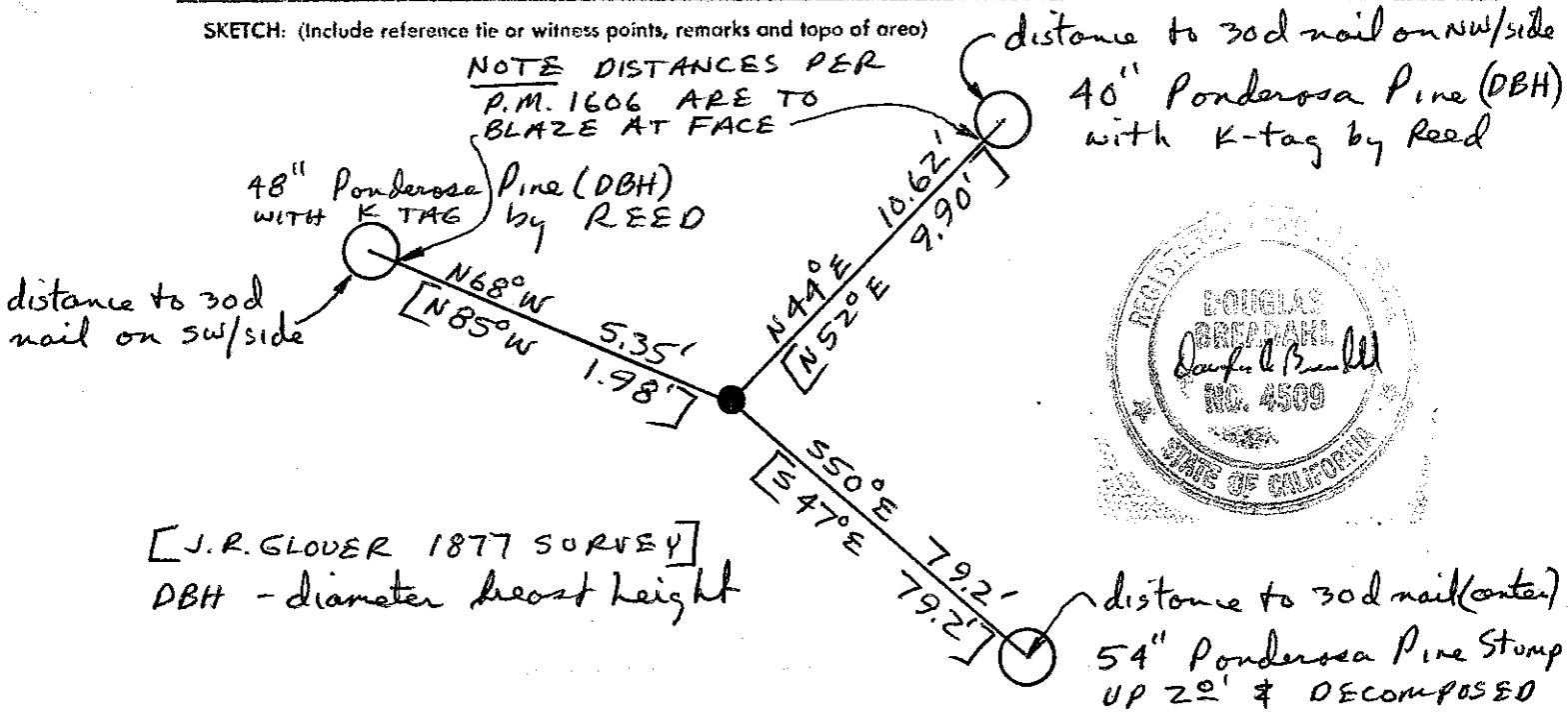
PHYSICAL DESCRIPTION OF MONUMENTS REBUILT OR PERPETUATED

SET $1 1/4$ " X 30" GALVANIZED IRON PIPE IN PLACE OF $3/4$ " I.O.I.P. AND SET A 4" ALUMINUM CAP THEREIN (UP 0.2')

CALIFORNIA COORDINATE SYSTEM ORDER: FIRST SECOND THIRD
 STATIONS USED: NGS (USC & GS) STATE COUNTY OTHER STATION _____ STATION _____
 ZONE _____ ELEVATION _____ NORTHINGS (Y) _____ EASTINGS (X) _____

SKETCH: (Include reference tie or witness points, remarks and topo of area)

NOTE DISTANCES PER P.M. 1606 ARE TO BLAZE AT FACE



[J.R. GLOVER 1877 SURVEY]
 DBH - diameter breast height

SURVEYOR'S CERTIFICATE

THIS CORNER RECORD WAS PREPARED BY ME OR UNDER MY DIRECTION IN CONFORMANCE WITH THE LAND SURVEYORS ACT ON MAY 5 1984

SIGNED: Douglas A. Breadahl
 L.S. or R.C.E. No. 4509

SEAL

COUNTY SURVEYOR'S CERTIFICATE

THE CORNER RECORD WAS RECEIVED _____ 19__ AND EXAMINED AND FILED _____ 19__

BY: _____ TITLE: _____

DOCUMENT No. _____

STATEMENT ON BACK OF SHEET

YES NO