

CORNER RECORD

COUNTY OF Madera T. 8 S R. 23 E MENDOCINO CALIF.

CORNER TYPE: GOV'T CORNER MEANDER RANCHO CONTROL OTHER

CORNER IDENTIFICATION --- DATE OF VISIT Sept. 18 19 74



West 1/4 Corner of Sec 20, T8S, R23E, MDB&M

CORNER -- LEFT AS FOUND FOUND & TAGGED REESTABLISHED OBLITERATED CORNER
REBUILT

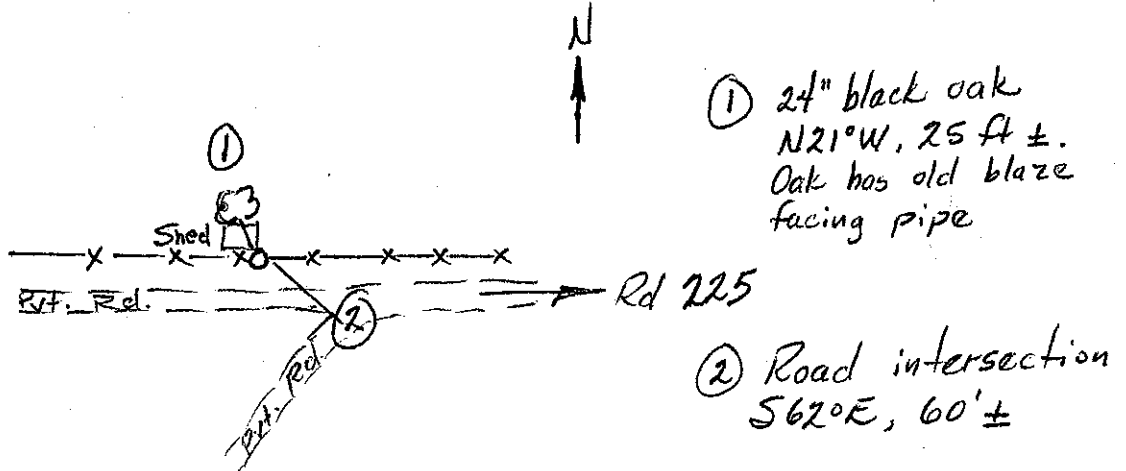
PHYSICAL DESCRIPTION OF CORNER FOUND; EVIDENCE & METHOD USED TO IDENTIFY OR REESTABLISH:

2" iron pipe in rock mound in fence line with tag # L.S. 2737

PHYSICAL DESCRIPTION OF MONUMENTS REBUILT OR PERPETUATED:

CALIFORNIA COORDINATE SYSTEM ORDER: FIRST SECOND THIRD
STATIONS USED: NOS (USC & GS) STATE COUNTY OTHER STATION _____
STATION _____ ZONE _____ ELEVATION _____ NORTHINGS (Y) _____
EASTINGS (X) _____

SKETCH: (INCLUDE REFERENCE TIE OR WITNESS POINTS, REMARKS AND TOPO OF AREA)



SURVEYOR'S CERTIFICATE
 THIS CORNER RECORD WAS PREPARED BY ME OR UNDER MY DIRECTION IN CONFORMANCE WITH THE LAND SURVEYORS ACT ON
Sept. 18 1974
 SIGNED: [Signature]
 L.S. or R.C.E. No: LS 2737
 STATE OF CALIFORNIA SEAL

COUNTY SURVEYOR'S CERTIFICATE
 THE CORNER RECORD WAS RECEIVED Oct. 9 19 74
 BY: Albert O. Brute
 TITLE: County Engineer/Surveyor
 DOCUMENT No. 74-19-1
 STATEMENT ON BACK OF SHEET
 YES NO