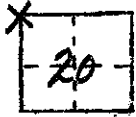


CORNER RECORD
 COUNTY OF Madera T. 85 R. 23E MD MERIDIAN CALIF.
 CORNER TYPE: GOV'T CORNER MEANDER RANCHO CONTROL OTHER
 CORNER IDENTIFICATION --- DATE OF VISIT Nov. 7 19 74



NW Cor. Sec. 20, T. 85., R. 23E., M.D.B. & M.

CORNER -- LEFT AS FOUND FOUND & TAGGED REESTABLISHED OBLITERATED CORNER
 REBUILT

PHYSICAL DESCRIPTION OF CORNER FOUND; EVIDENCE & METHOD USED TO IDENTIFY OR REESTABLISH:

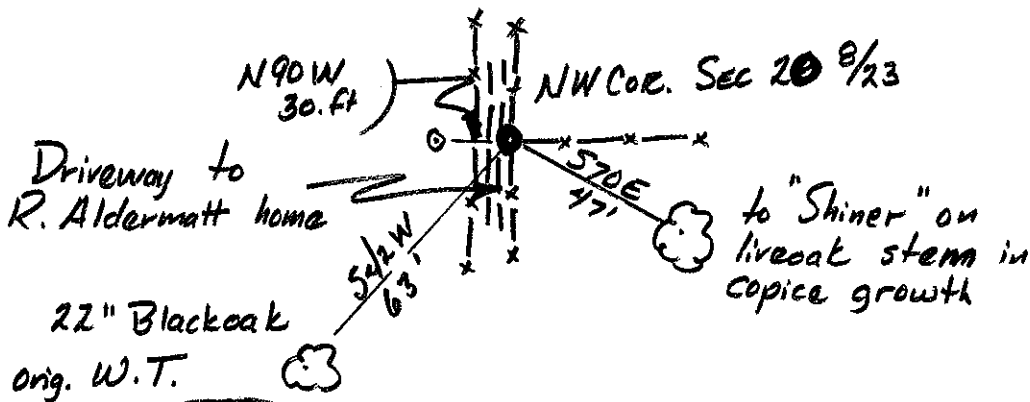
Fd 1" Iron Pipe tagged LS 2737

PHYSICAL DESCRIPTION OF MONUMENTS REBUILT OR PERPETUATED:

N.A.

CALIFORNIA COORDINATE SYSTEM ORDER: FIRST SECOND THIRD
 STATIONS USED: NOS (USC & GS) STATE COUNTY OTHER STATION _____
 STATION _____ ZONE _____ ELEVATION _____ NORTHINGS (Y) _____
 EASTINGS (X) _____

SKETCH: (INCLUDE REFERENCE TIE OR WITNESS POINTS, REMARKS AND TOPO OF AREA)



SURVEYOR'S CERTIFICATE
 THIS CORNER RECORD WAS PREPARED BY ME OR UNDER MY DIRECTION IN CONFORMANCE WITH THE LAND SURVEYING ACT ON
Nov 7 19 74
 SIGNED: W. S. SIKORA
 L.S. or R.C.S. No.: 254126
 STATE OF CALIFORNIA SEAL

COUNTY SURVEYOR'S CERTIFICATE
 THE CORNER RECORD WAS RECEIVED Nov. 13 19 74 AND EXAMINED AND FILED _____ 19 ____
 BY: Albert O. White
 TITLE: County Engineer
 DOCUMENT No. 74-28-1
 STATEMENT ON BACK OF SHEET
 YES NO