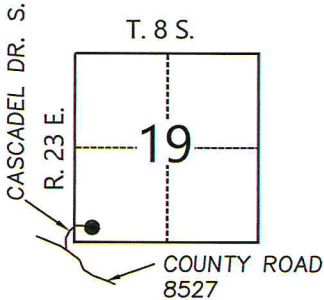


# CORNER RECORD

Agency Index \_\_\_\_\_  
 Document Number \_\_\_\_\_

City of MADERA (UNINCORPORATED) County of MADERA, California

Brief Legal Description LOT 50 PER MAP OF TRACT NO. 119 RECORDED IN VOLUME 9 OF PLATS  
PAGES 146-150, MADERA COUNTY RECORDS



- CORNER TYPE**
- Government Corner  Control  
 Meander  Property  
 Rancho  Other

Date of Survey 12/15/2020

- COORDINATES (Optional)**
- N. \_\_\_\_\_ E. \_\_\_\_\_  
 Elevation \_\_\_\_\_  
 Units  Metric  U.S. Survey Foot  
 Horizontal Datum \_\_\_\_\_  
 Zone \_\_\_\_\_ Epoch Date \_\_\_\_\_  
 Vertical Datum \_\_\_\_\_  
 Complies with Public Resources Code §§8801-8819  
 Complies with Public Resources Code §§8890-8902

- PLS Act Ref.:**  8765(d)  8771  8773  Other:
- Corner/Monument:**  Left as found  Established  Rebuilt  Pre-Construction  
 Found and tagged  Reestablished  Referenced  Post-Construction

Narrative of corner identified and monument as found, set, reset, replaced, or removed:

See sheet #2 for description(s):

FOUND SOUTHWEST CORNER AND THE NORTHWEST CORNER OF ABOVE-DESCRIBED LOT 50. THE SOUTHEAST AND  
NORTHEAST WERE MISSING. RE-ESTABLISHED THE NORTHEAST AND THE SOUTHEAST USING RECORD BEARINGS AND  
DISTANCES PER ABOVE-DESCRIBED PLAT.

## SURVEYOR'S STATEMENT

This Corner Record was prepared by me or under my direction in conformance with  
 the Professional Land Surveyors' Act on 01/13/2021  
 Signed Casey Wayne Lowry (P.L.S.) or R.C.E. No. 8154



## COUNTY SURVEYOR'S STATEMENT

This Corner Record was received 2/1/2021  
 and examined and filed 2/1/2021  
 Signed Garland R. Shaw P.L.S. or R.C.E. No. 4837  
 Title COUNTY SURVEYOR



**County Surveyor's Comment**

~ No COMMENTS ~

*[Handwritten signature]*

