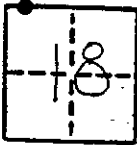


CORNER RECORD

COUNTY OF Madera T. 8 S. R. 23 E. M.D.B. & M. MERIDIAN CALIFORNIA

CORNER TYPE: GOVT. CORNER MEASUREMENT RANCHO CONTROL OTHER

CORNER IDENTIFICATION - DATE OF VISIT March 6 19 86



The west-west 1/64 corner on north line of section 18 8/23.
(Common to sections 7 and 18)

CORNER - LEFT AS FOUND FOUND AND TAGGED REESTABLISHED OBLITERATED CORNER REBUILT

PHYSICAL DESCRIPTION OF CORNER FOUND; EVIDENCE AND METHOD USED TO IDENTIFY OR REESTABLISH

The corner position was established by subdivision of section procedure.

(See sketch on back)

PHYSICAL DESCRIPTION OF MONUMENTS RESULT OR PERPETUATED

Set a F.S.M., up 4".
Set a metal post with Forest Service monument signs attached 4' ± NW of the corner.

F.S.M. - Aluminum monument, 2 1/2" O.D., 30" long with a 3 1/4" O.D. aluminum cap stamped for the corner, with LS 4689, the date and the Forest Service logo.

CALIFORNIA COORDINATE SYSTEM ORDER: FIRST SECOND THIRD
STATIONS USED: NGS (USC & GS) STATE COUNTY OTHER STATION _____ STATION _____
ZONE _____ ELEVATION _____ NORTHINGS (Y) _____ EASTINGS (X) _____

SKETCH: (Include reference tie or witness points, remarks and topo of area)

Corner Ties:

Cap Inscription

- | | |
|---|--|
| <ol style="list-style-type: none"> 1. A 3-wire power pole, angle point, power lines run NW and SE, bears N 52° 59' W, 72.22'. 2. A power pole, angle point, marked "carney", "T-79", "wask", "6", and "40", power lines run easterly, westerly, and northwesterly, bears N 47° 36' E, 35.46'. 3. A forked Live Oak, 10.4" dia. at the base, bears S 18° 40' E, 20.31'. | <p>S 7
-- W-W 1/64
S 18
LS 4689
1986</p> |
|---|--|

Found a 3/4" O.D. iron pipe, tagged LS 2737, down 5", S 39° 42' 00" W, 2.85' — NOT ACCEPTED.

J-1.5
F.B. 33/54
Job No. 86-7

SURVEYOR'S CERTIFICATE

THIS CORNER RECORD WAS RECEIVED BY RANCHO OWNER OR HIS ATTORNEY IN DIRECTION IN CONFORMANCE WITH THE LAND SURVEYORS ACT ON March 11 19 86

SIGNED: Howard Arnold Cohen

LS 4689

STATE OF CALIFORNIA

COUNTY SURVEYOR'S CERTIFICATE

THE CORNER RECORD WAS RECEIVED 5/28 19 86 AND EXAMINED AND FILED 6/5 19 86

BY: [Signature]

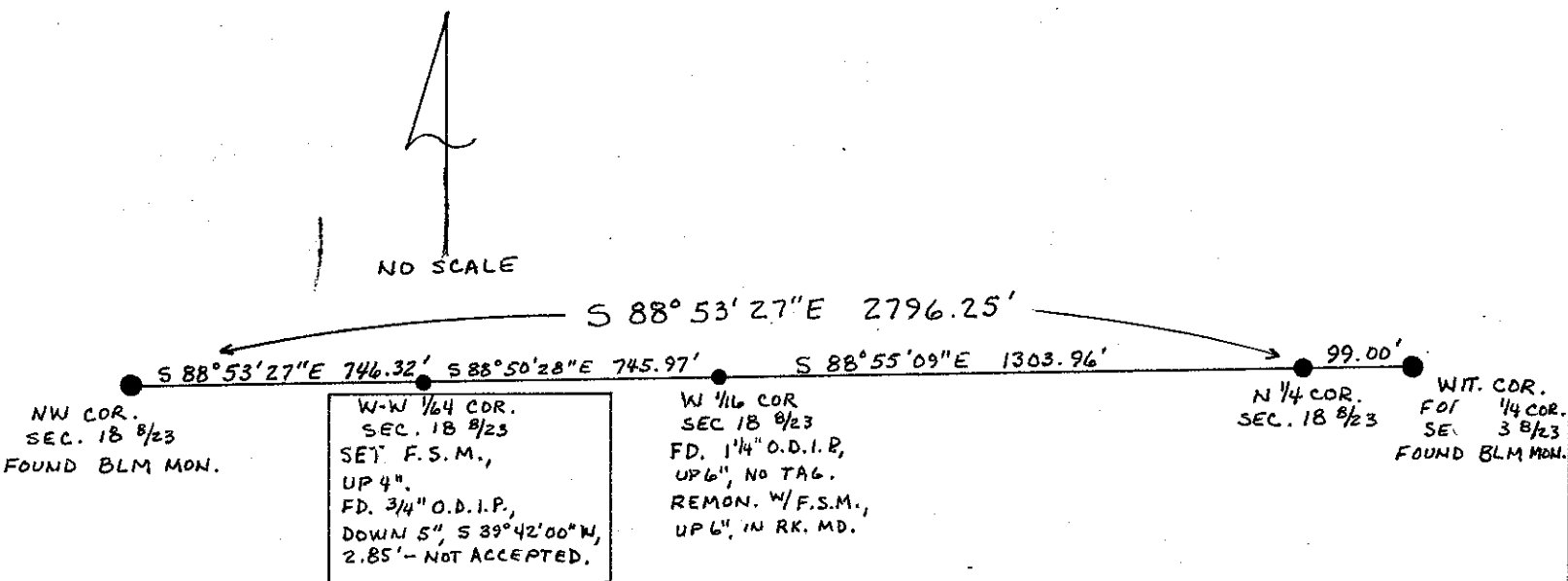
TITLE: _____

DOCUMENT No. _____

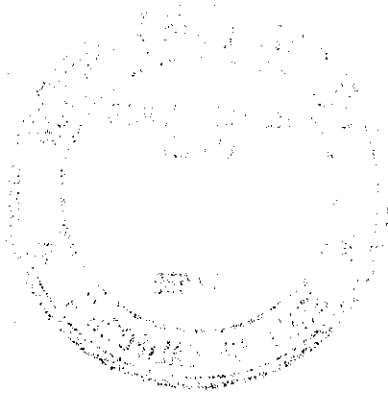
STATEMENT ON BACK OF SHEET YES NO

Bearings are to the center of bearing objects at the base. Distances are horizontal to a nail and tag (stamped LS 4689) driven into the side center at the base.

Stamped monument in accordance with the BLM 1973 "Manual of Surveying Instructions".



THIS CORNER RECORD



0823110580