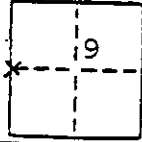


CORNER RECORD (For Madera County)

COUNTY OF MERCED T. 9 S. R. 16 E. M.D.B. & MERIDIAN CALIF

CORNER TYPE: GOVT. CORNER MEANDER RANCHO CONTROL OTHER
CORNER IDENTIFICATION - DATE OF VISIT Aug 16 19 90



Note: This corner lies in Merced County but boundary survey lies in Madera County.

W 1/4 cor. sec 9 T. 9S R 16E

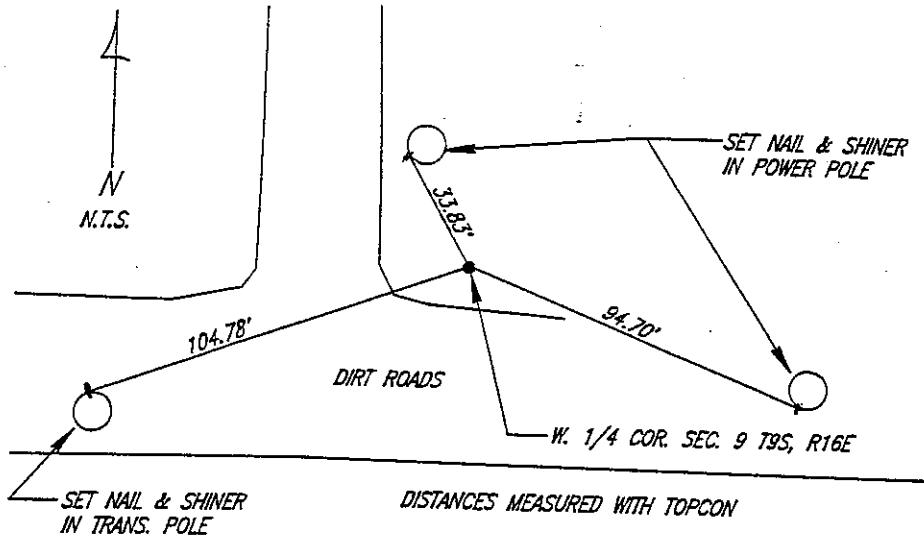
CORNER - LEFT AS FOUND FOUND AND TAGGED REESTABLISHED OBLITERATED CORNER RESULT


PHYSICAL DESCRIPTION OF CORNER FOUND; EVIDENCE AND METHOD USED TO IDENTIFY OR REESTABLISH
Fd 3" x 3" post 0.5' south of fence corner, down 0.8' has 5/8' re-bar on Northedge and nail in center (used nail) identified by record of survey filed in Vol 2 of surveys at page 65 Merced County Records.

PHYSICAL DESCRIPTION OF MONUMENTS RESULT OR PERPETUATED

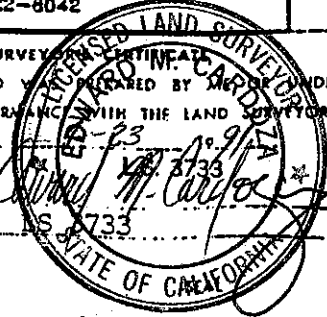
CALIFORNIA COORDINATE SYSTEM ORDER: FIRST SECOND THIRD
STATIONS USED: NGS (USC & GSI) STATE COUNTY OTHER STATION _____ STATION _____
ZONE _____ ELEVATION _____ NORTHINGS (Y) _____ EASTINGS (X) _____

SKETCH: (Include reference tie or witness points, remarks and topo of area)



 **BEDESEN-CARDOZA-ANDREWS, INC.**
Civil Engineering-Land Surveying
777 W. 22nd St., P.O. Box 391
Merced, California 95341
(209) 722-8042

SURVEYED AND PREPARED BY BEDESEN-CARDOZA-ANDREWS, INC. UNDER MY DIRECTION IN CONFORMANCE WITH THE LAND SURVEYORS ACT ON _____
SIGNED: [Signature]
I.S. or R.C.E. No. 733



EXP. 6-30-92

COUNTY SURVEYOR'S CERTIFICATE
THE CORNER RECORD WAS RECEIVED 5-22 1991
AND EXAMINED AND FILED 5-23 1991
BY: Dave Stinson
TITLE: Co. Eng.
DOCUMENT No. _____
STATEMENT ON BACK OF SHEET YES NO