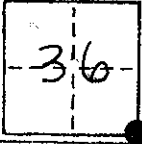


CORNER RECORD

COUNTY OF MADEIRA T. 9 R. 18 MDR 4 MERIDIAN CALIFORNIA

CORNER TYPE: GOVT. CORNER MEANDER RANCHO CONTROL OTHER

CORNER IDENTIFICATION - DATE OF VISIT 7-2 1985



SE COR 36 9/18

CORNER - LEFT AS FOUND FOUND AND TAGGED REESTABLISHED OBLITERATED CORNER REBUILT

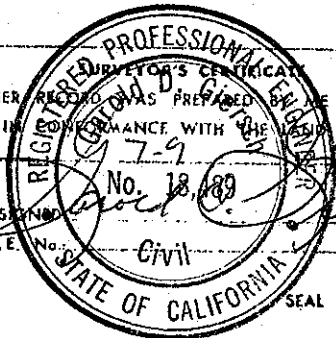
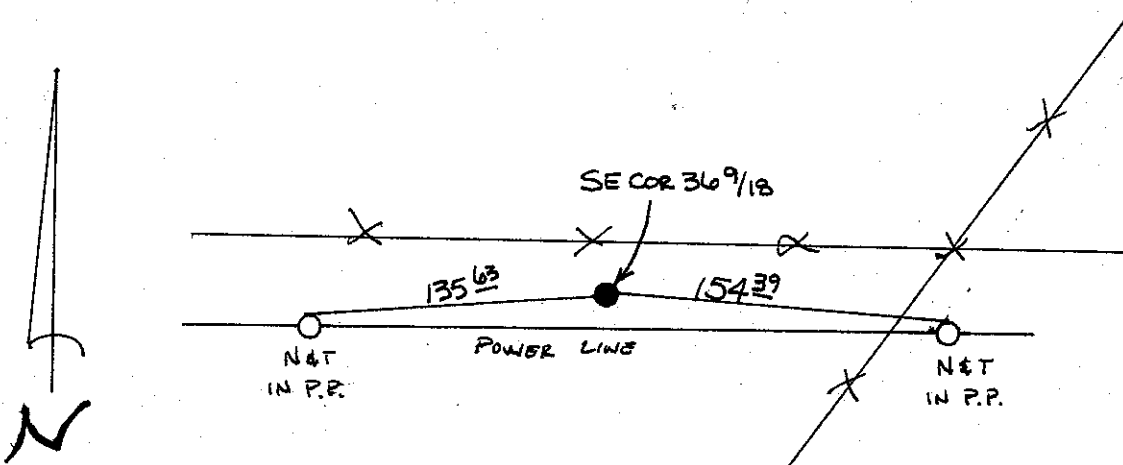
PHYSICAL DESCRIPTION OF CORNER FOUND; EVIDENCE AND METHOD USED TO IDENTIFY OR REESTABLISH

FD 2" IP, NO TAG. SET TAG R.C.E 18489

PHYSICAL DESCRIPTION OF MONUMENTS REBUILT OR PERPETUATED

CALIFORNIA COORDINATE SYSTEM ORDER: FIRST SECOND THIRD
 STATIONS USED: NGS (USC & GS) STATE COUNTY OTHER STATION _____ STATION _____
 ZONE _____ ELEVATION _____ NORTHINGS (Y) _____ EASTINGS (X) _____

SKETCH: (Include reference tie or witness points, remarks and topo of area)



THIS CORNER RECORD WAS PREPARED BY ME OR UNDER MY DIRECTION IN CONFORMANCE WITH THE SURVEYORS ACT ON _____ 1985
 L.S. or R.C.E. No. _____

COUNTY SURVEYOR'S CERTIFICATE

THE CORNER RECORD WAS RECEIVED 10/23/85 AND EXAMINED AND 1985 BY Thomas C. Johnson
 TITLE: _____

DOCUMENT No. _____

STATEMENT ON BACK OF SHEET

YES NO