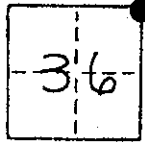


CORNER RECORD

COUNTY OF MADEIRA T. 9 R. 18 MDB & MERIDIAN CALIFORNIA
 CORNER TYPE: GOV'T. CORNER MEANDER RANCHO CONTROL OTHER
 CORNER IDENTIFICATION — DATE OF VISIT 7-2 1985



NE COR 36⁹/₁₈

CORNER — LEFT AS FOUND FOUND AND TAGGED REESTABLISHED OBLITERATED CORNER REBUILT
 PHYSICAL DESCRIPTION OF CORNER FOUND; EVIDENCE AND METHOD USED TO IDENTIFY OR REESTABLISH

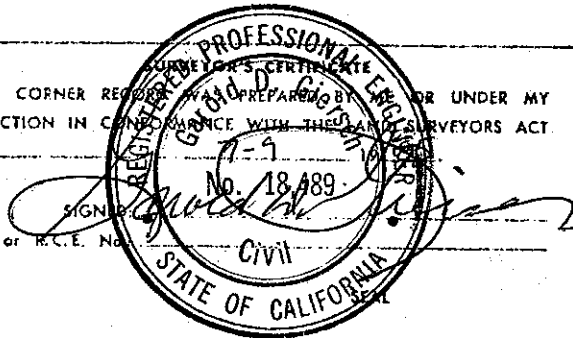
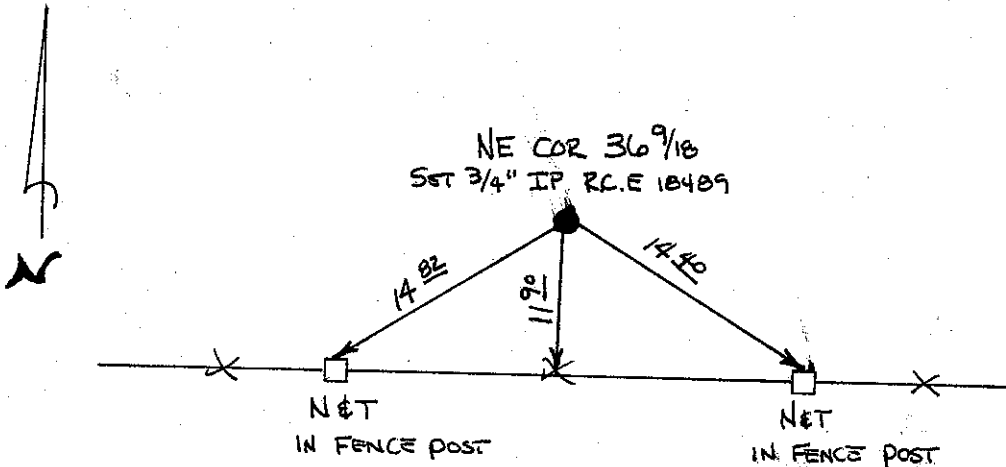
SET BY SINGLE PROPORTION

PHYSICAL DESCRIPTION OF MONUMENTS REBUILT OR PERPETUATED

TAGGED
 SET 3/4" IP R.C.E. 18489

CALIFORNIA COORDINATE SYSTEM ORDER: FIRST SECOND THIRD
 STATIONS USED: NGS (USC & GS) STATE COUNTY OTHER STATION _____ STATION _____
 ZONE _____ ELEVATION _____ NORTHINGS (Y) _____ EASTINGS (X) _____

SKETCH: (Include reference tie or witness points, remarks and topo of area)



THIS CORNER RECORD WAS PREPARED BY _____ OR UNDER MY DIRECTION IN CONFORMANCE WITH THE SURVEYORS ACT ON _____
 SIGNATURE _____
 L.S. or R.C.E. No. _____

COUNTY SURVEYOR'S CERTIFICATE
 THE CORNER RECORD WAS RECEIVED 10/23/85
 AND EXAMINED AND FILED 11/12/85
 BY: Thomas D. Jensen
 TITLE: _____

DOCUMENT No. _____

STATEMENT ON BACK OF SHEET

YES NO