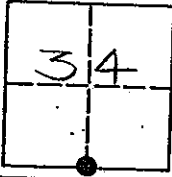


CORNER RECORD

COUNTY OF MADERA TOWNSHIP 9 SOUTH, RANGE 18 EAST, M.D.B.&M. CALIFORNIA

CORNER TYPE: GOV'T. CORNER [X] MEANDER [] RANCHO [] CONTROL [] OTHER []

CORNER IDENTIFICATION - DATE OF VISIT: NOVEMBER 1 19 93



SOUTH 1/4 CORNER, SECTION 34, 9/18.

CORNER - LEFT AS FOUND [] FOUND AND TAGGED [] REESTABLISHED OBLITERATED CORNER [X] OR LOST REBUILT []

PHYSICAL DESCRIPTION OF CORNER FOUND; EVIDENCE AND METHOD USED TO IDENTIFY OR REESTABLISH

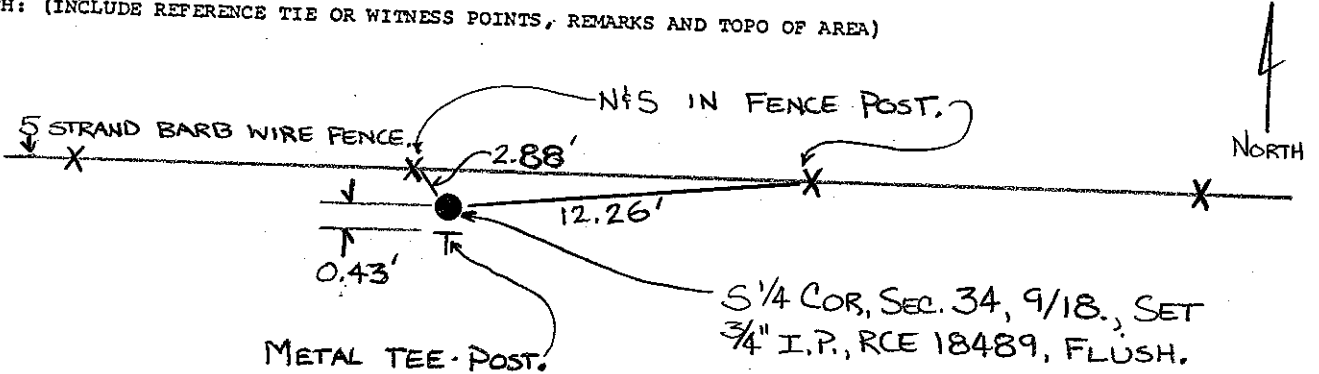
REESTABLISHED BY SINGLE PROPORTION METHOD.

PHYSICAL DESCRIPTION OF MONUMENTS REBUILT OR PERPETUATED

SET 3/4" IRON PIPE, TAGGED "RCE 18489", FLUSH.

CALIFORNIA COORDINATE SYSTEM ORDER: FIRST [] SECOND [] THIRD [] STATIONS USED: NGS (USC & GS) [] STATE [] COUNTY [] OTHER [] STATION STATION ZONE ELEVATION NORTHINGS (Y) EASTINGS (X)

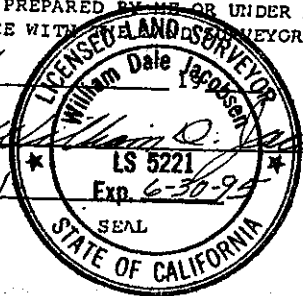
SKETCH: (INCLUDE REFERENCE TIE OR WITNESS POINTS, REMARKS AND TOPO OF AREA)



SURVEYOR'S CERTIFICATE

THIS CORNER RECORD WAS PREPARED BY ME OR UNDER MY DIRECTION IN CONFORMANCE WITH THE SURVEYOR'S ACT ON

SIGNED: 1/6/94 [Signature] William D. Jacobsen



COUNTY SURVEYOR'S CERTIFICATE

THE CORNER RECORD WAS RECEIVED 1/10 1994

AND EXAMINED AND FILED 1/12 1994

BY: [Signature]

TITLE: ENG. TECH.

DOCUMENT NO: 49211N STATEMENT ON BACK OF SHEET: YES [] NO []

L.S. or R.C.E. No: 5221