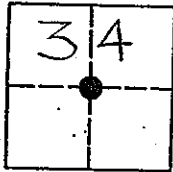


CORNER RECORD

COUNTY OF MADERA TOWNSHIP 9 SOUTH, RANGE 18 EAST, M.D.B.&M. CALIFORNIA

CORNER TYPE: GOV'T. CORNER MEANDER RANCHO CONTROL OTHER

CORNER IDENTIFICATION - DATE OF VISIT: NOVEMBER 1 19 93



CENTER 1/4 CORNER, SECTION 34, 9/18.

CORNER - LEFT AS FOUND FOUND AND TAGGED REESTABLISHED OBLITERATED CORNER REBUILT OR LOST

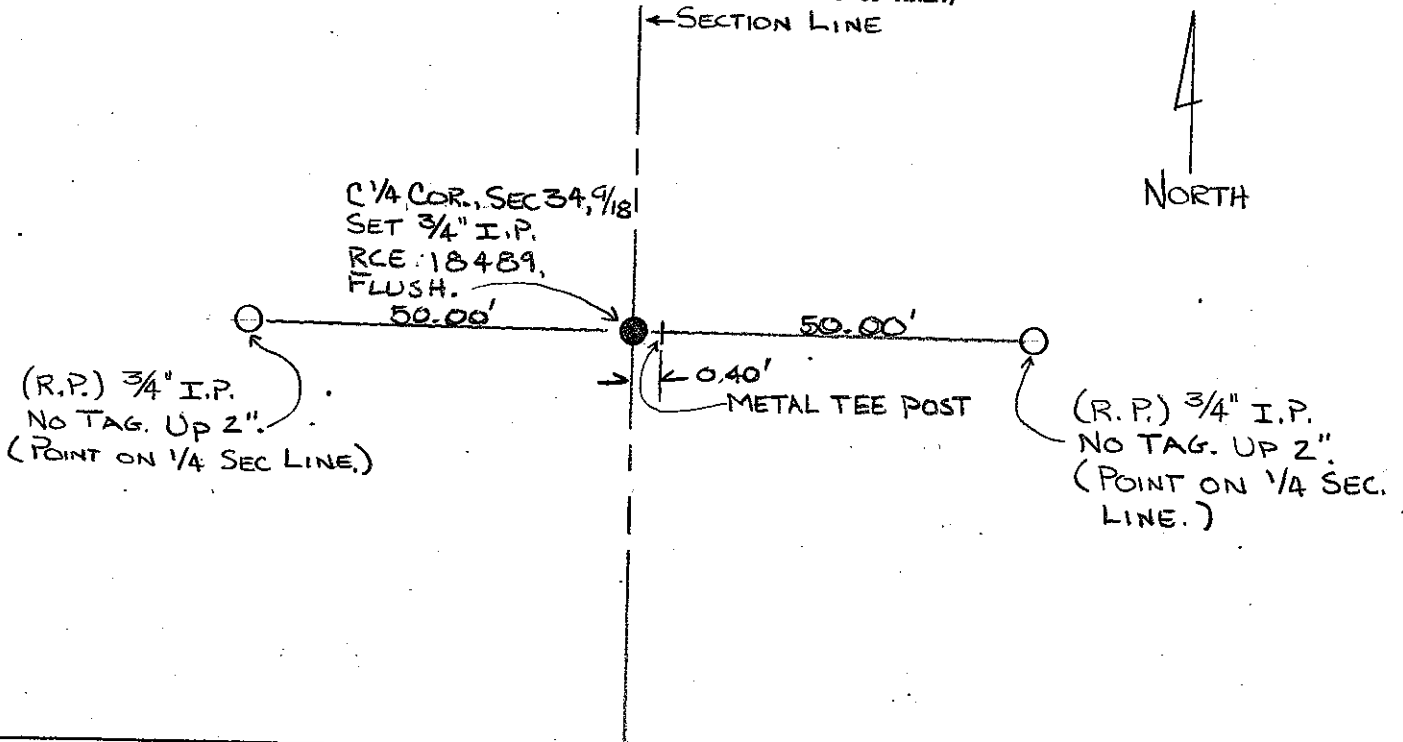
PHYSICAL DESCRIPTION OF CORNER FOUND; EVIDENCE AND METHOD USED TO IDENTIFY OR REESTABLISH
ESTABLISHED BY INTERSECTION OF ADJACENT 1/4 CORNERS OF SECTION 34.

PHYSICAL DESCRIPTION OF MONUMENTS REBUILT OR PERPETUATED

SET 3/4" IRON PIPE, TAGGED "RCE 18489", FLUSH.

CALIFORNIA COORDINATE SYSTEM ORDER: FIRST SECOND THIRD
 STATIONS USED: NGS (USC & GS) STATE COUNTY OTHER STATION _____ STATION _____
 ZONE _____ ELEVATION _____ NORTHINGS (Y) _____ EASTINGS (X) _____

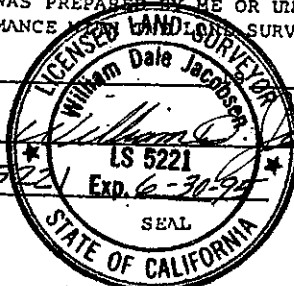
SKETCH: (INCLUDE REFERENCE TIE OR WITNESS POINTS, REMARKS AND TOPO OF AREA)



SURVEYOR'S CERTIFICATE

THIS CORNER RECORD WAS PREPARED BY ME OR UNDER MY DIRECTION IN CONFORMANCE WITH THE SURVEYOR'S ACT ON

1/5/94
 SIGNED: William Dale Jacobson



L.S. or R.C.E. No: 5221

COUNTY SURVEYOR'S CERTIFICATE

THE CORNER RECORD WAS RECEIVED 1/10 19 94

AND EXAMINED AND FILED 1/12 19 94

BY: K. K. Hall

TITLE: ENG. TECH.

DOCUMENT NO: 492111
 STATEMENT ON BACK OF SHEET: YES NO