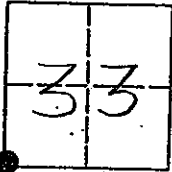


CORNER RECORD

COUNTY OF MADERA TOWNSHIP 9 SOUTH, RANGE 18 EAST, M.D.B.&M. CALIFORNIA

CORNER TYPE: GOV'T. CORNER MEANDER RANCHO CONTROL OTHER

CORNER IDENTIFICATION - DATE OF VISIT: MAY 18 1993



SOUTH WEST CORNER, SECTION 33, 9/18.

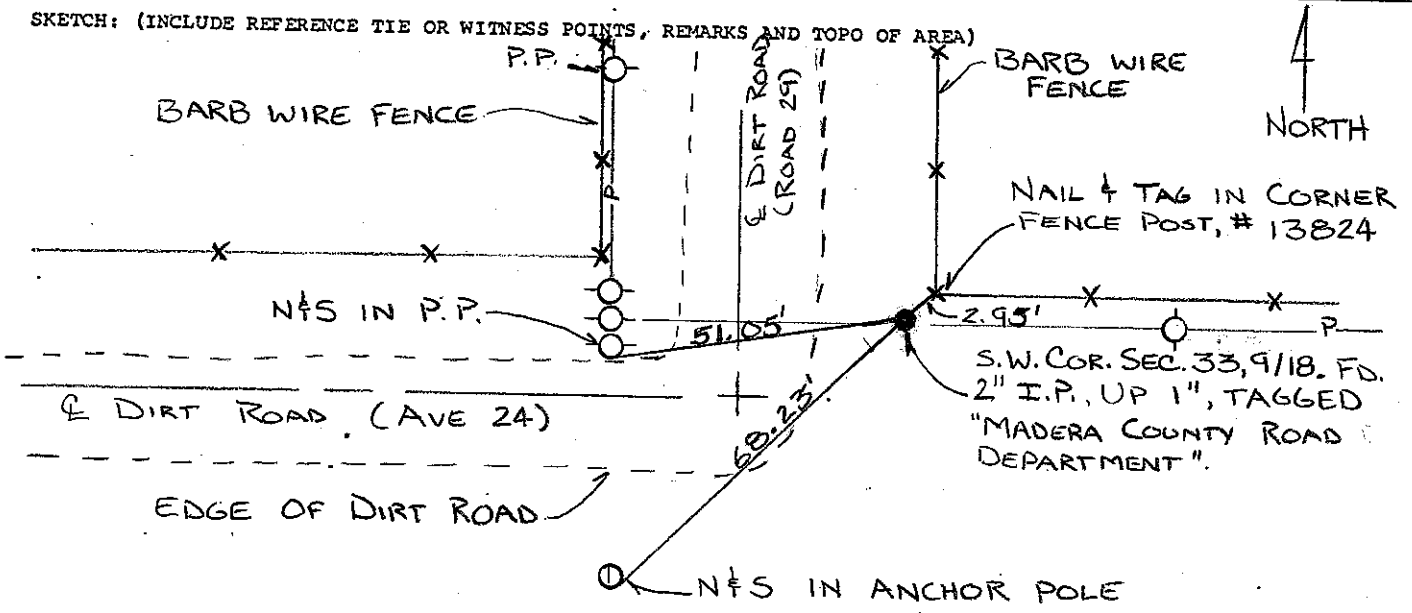
CORNER - LEFT AS FOUND FOUND AND TAGGED REESTABLISHED OBLITERATED CORNER REBUILT

PHYSICAL DESCRIPTION OF CORNER FOUND; EVIDENCE AND METHOD USED TO IDENTIFY OR REESTABLISH
FOUND 2" IRON PIPE, UP 1", TAGGED "MADERA COUNTY ROAD DEPARTMENT".

PHYSICAL DESCRIPTION OF MONUMENTS REBUILT OR PERPETUATED

CALIFORNIA COORDINATE SYSTEM ORDER: FIRST SECOND THIRD
 STATIONS USED: NGS (USC & GS) STATE COUNTY OTHER STATION _____ STATION _____
 ZONE _____ ELEVATION _____ NORTHINGS (Y) _____ EASTINGS (X) _____

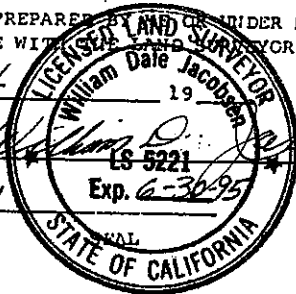
SKETCH: (INCLUDE REFERENCE TIE OR WITNESS POINTS, REMARKS AND TOPO OF AREA)



SURVEYOR'S CERTIFICATE

THIS CORNER RECORD WAS PREPARED BY _____ UNDER MY DIRECTION IN CONFORMANCE WITH _____ SURVEYOR'S ACT ON

SIGNED: _____



L.S. or R.C.E. No: 5221

COUNTY SURVEYOR'S CERTIFICATE

THE CORNER RECORD WAS RECEIVED 1/10 1994
 AND EXAMINED AND FILED 1/12 1994.

BY: K. Kell

TITLE: ENG. TECH.

DOCUMENT NO: 49211Q
 STATEMENT ON BACK OF SHEET: YES NO