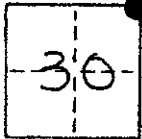


CORNER RECORD

COUNTY OF MADEIRA T. 9 R. 18 MOB & MERIDIAN CALIFORNIA
 CORNER TYPE: GOVT. CORNER MEANDER RANCHO CONTROL OTHER
 CORNER IDENTIFICATION -- DATE OF VISIT 7-9 19 85



NE COR 30 9/18

CORNER -- LEFT AS FOUND FOUND AND TAGGED REESTABLISHED OBLITERATED CORNER REBUILT

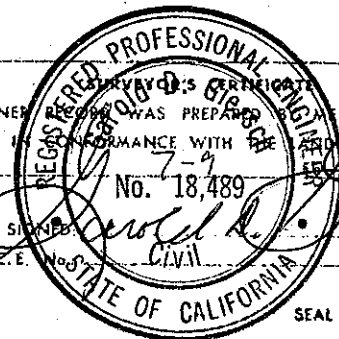
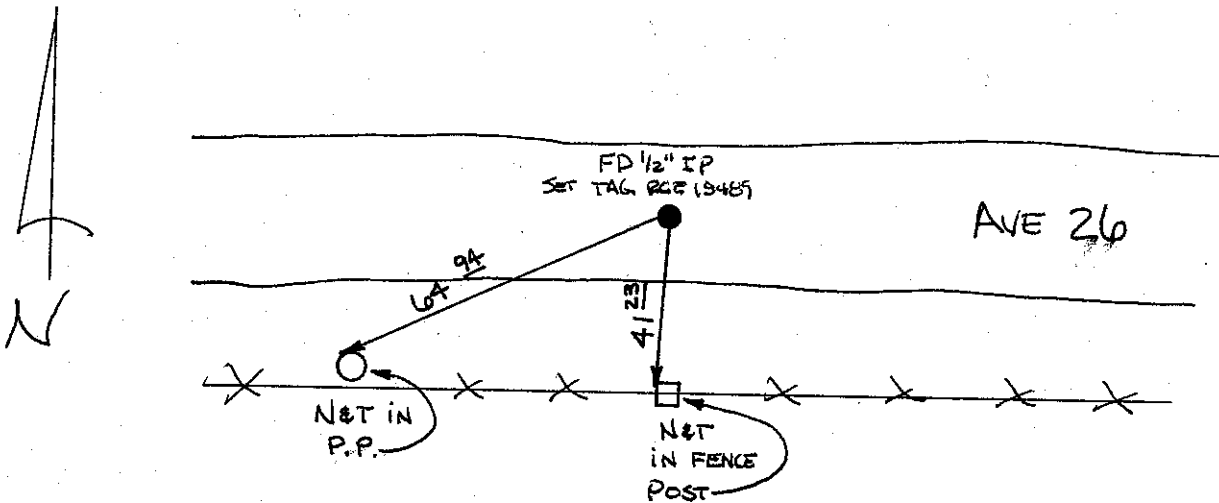
PHYSICAL DESCRIPTION OF CORNER FOUND; EVIDENCE AND METHOD USED TO IDENTIFY OR REESTABLISH

FD 1/2" IP. SET TAG R.C.E 18489

PHYSICAL DESCRIPTION OF MONUMENTS REBUILT OR PERPETUATED

CALIFORNIA COORDINATE SYSTEM ORDER: FIRST SECOND THIRD
 STATIONS USED: NGS (USC & GS) STATE COUNTY OTHER STATION _____ STATION _____
 ZONE _____ ELEVATION _____ NORTHINGS (Y) _____ EASTINGS (X) _____

SKETCH: (Include reference tie or witness points, remarks and topo of area)



THIS CORNER RECORD WAS PREPARED OR UNDER MY DIRECTION IN CONFORMANCE WITH THE SURVEYORS ACT ON _____ 1985 No. 18,489
 SIGNED: _____
 I.S. or R.C.E. No. _____

COUNTY SURVEYOR'S CERTIFICATE

THE CORNER RECORD WAS RECEIVED 10/23 1985 AND EXAMINED AND FOUND CORRECT 11/17 1985 BY James A. Hanson TITLE: _____

DOCUMENT No. _____

STATEMENT ON BACK OF SHEET

YES NO