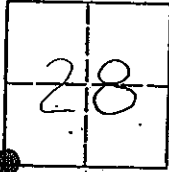


CORNER RECORD

COUNTY OF MADERA TOWNSHIP 9 SOUTH, RANGE 18 EAST, M.D.B.&M. CALIFORNIA

CORNER TYPE: GOV'T. CORNER MEANDER RANCHO CONTROL OTHER

CORNER IDENTIFICATION - DATE OF VISIT: NOVEMBER 1 1993



SOUTH WEST CORNER, SECTION 28, 9/18.

CORNER - LEFT AS FOUND POUND AND TAGGED REESTABLISHED OBLITERATED CORNER REBUILT OR LOST

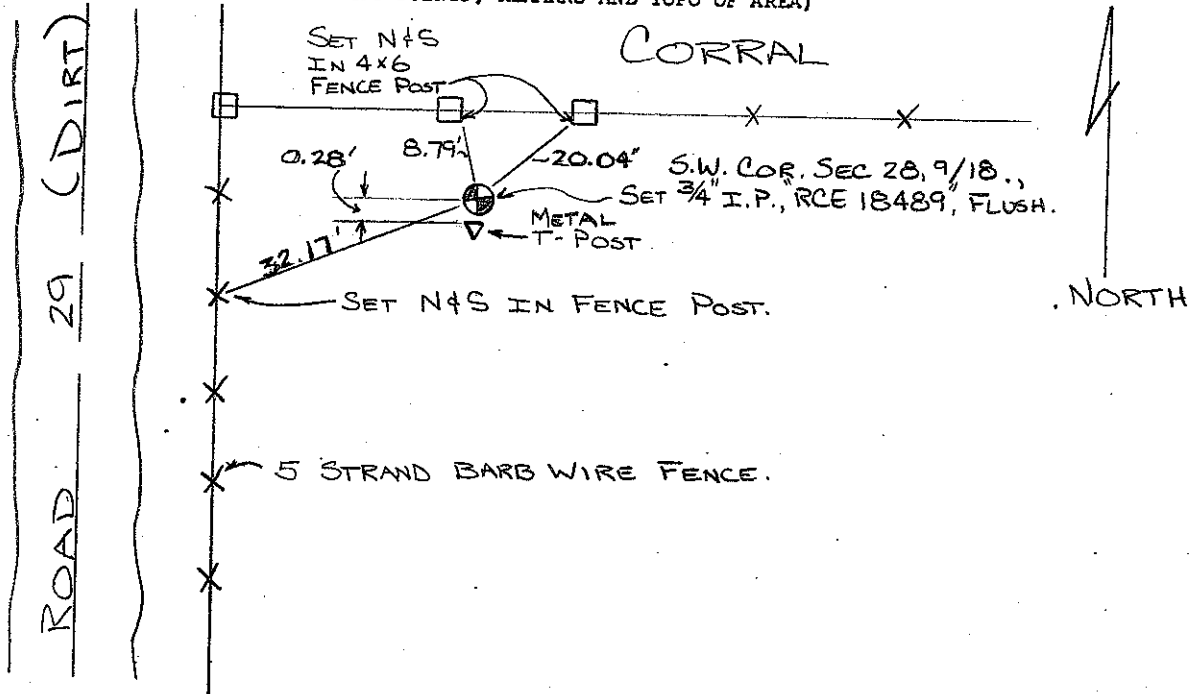
PHYSICAL DESCRIPTION OF CORNER FOUND; EVIDENCE AND METHOD USED TO IDENTIFY OR REESTABLISH
REESTABLISHED LOST CORNER BY DOUBLE PROPORTION METHOD

PHYSICAL DESCRIPTION OF MONUMENTS REBUILT OR PERPETUATED

SET 3/4" IRON PIPE, TAGGED "RCE 18489", FLUSH. SET BY DOUBLE PROPORTION METHOD.

CALIFORNIA COORDINATE SYSTEM ORDER: FIRST SECOND THIRD
STATIONS USED: NGS (USC & GS) STATE COUNTY OTHER STATION _____ STATION _____
ZONE _____ ELEVATION _____ NORTHINGS (Y) _____ EASTINGS (X) _____

SKETCH: (INCLUDE REFERENCE TIE OR WITNESS POINTS, REMARKS AND TOPO OF AREA)



SURVEYOR'S CERTIFICATE

THIS CORNER RECORD WAS PREPARED BY _____ OR UNDER MY DIRECTION IN CONFORMANCE WITH THE SURVEYOR'S ACT ON

SIGNED: William Dale Jaggsen

L.S. or R.C.E. No: 5221



COUNTY SURVEYOR'S CERTIFICATE

THE CORNER RECORD WAS RECEIVED 1/10 1994
AND EXAMINED AND FILED 1/12 1994.

BY: Kell

TITLE: ENG. TECH.

DOCUMENT No: 49211L
STATEMENT ON BACK OF SHEET: YES NO