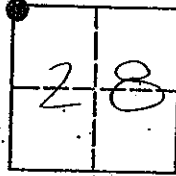


# CORNER RECORD

COUNTY OF MADERA TOWNSHIP 9 SOUTH, RANGE 18 EAST, M.D.B.&M. CALIFORNIA

CORNER TYPE: GOV'T. CORNER  MEANDER  RANCHO  CONTROL  OTHER

CORNER IDENTIFICATION - DATE OF VISIT: NOVEMBER 1 19 93



NORTH WEST CORNER, SECTION 28, 9/18.

CORNER - LEFT AS FOUND  FOUND AND TAGGED  REESTABLISHED OBLITERATED CORNER  REBUILT

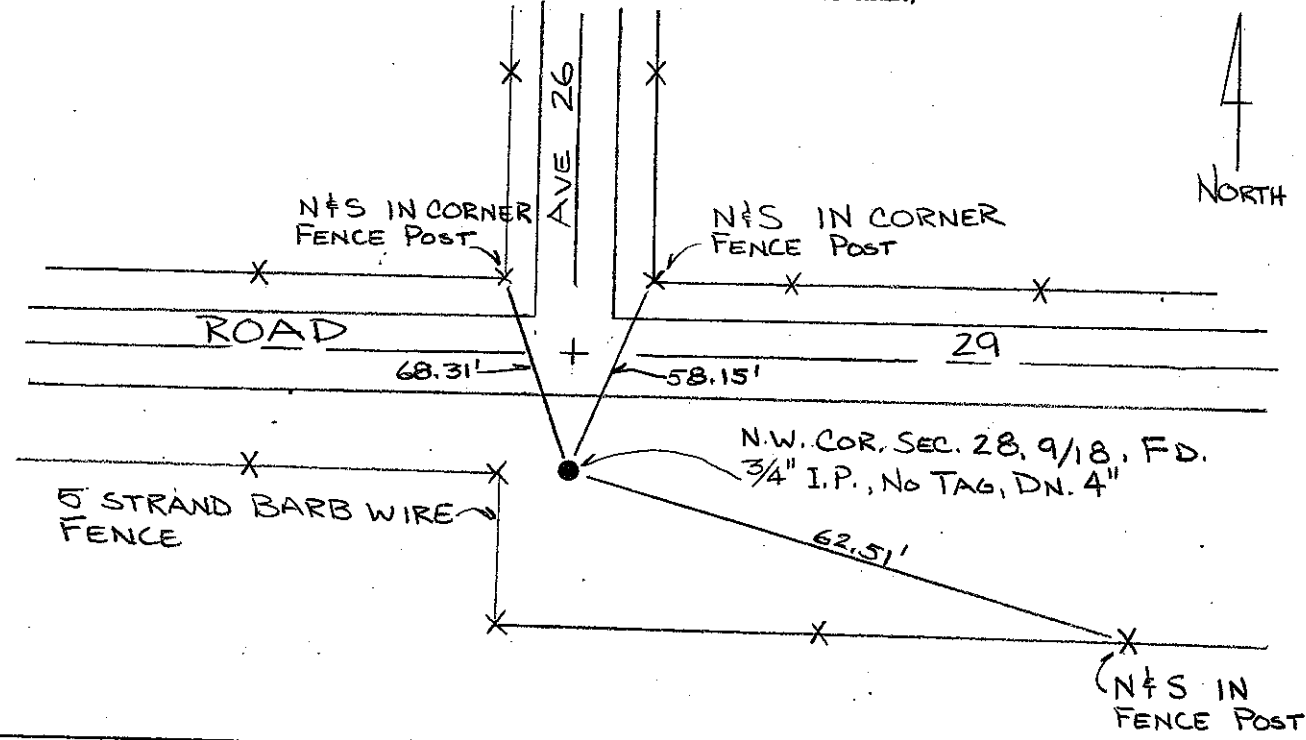
PHYSICAL DESCRIPTION OF CORNER FOUND; EVIDENCE AND METHOD USED TO IDENTIFY OR REESTABLISH


FOUND 3/4" IRON PIPE, NO TAGGED, DOWN 4".

PHYSICAL DESCRIPTION OF MONUMENTS REBUILT OR PERPETUATED

CALIFORNIA COORDINATE SYSTEM ORDER: FIRST  SECOND  THIRD   
 STATIONS USED: NGS (USC & GS)  STATE  COUNTY  OTHER  STATION \_\_\_\_\_ STATION \_\_\_\_\_  
 ZONE \_\_\_\_\_ ELEVATION \_\_\_\_\_ NORTHINGS (Y) \_\_\_\_\_ EASTINGS (X) \_\_\_\_\_

SKETCH: (INCLUDE REFERENCE TIE OR WITNESS POINTS, REMARKS AND TOPO OF AREA)



**SURVEYOR'S CERTIFICATE**  
 THIS CORNER RECORD WAS PREPARED BY ME OR UNDER MY DIRECTION IN CONFORMANCE WITH THE SURVEYOR'S ACT ON 1/5/94  
 SIGNED: William Dale Jacobsen  
 L.S. OF R.C.E. No. 5221  


**COUNTY SURVEYOR'S CERTIFICATE**  
 THE CORNER RECORD WAS RECEIVED 1/10 19 94  
 AND EXAMINED AND FILED 1/12 19 94.  
 BY: Kell  
 TITLE: ENG. TECH.  
 DOCUMENT No: 49211K  
 STATEMENT ON BACK OF SHEET: YES  NO