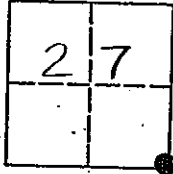


CORNER RECORD

COUNTY OF MADERA TOWNSHIP 9 SOUTH, RANGE 18 EAST, M.D.B.&M. CALIFORNIA

CORNER TYPE: GOV'T. CORNER MEANDER RANCHO CONTROL OTHER

CORNER IDENTIFICATION - DATE OF VISIT: NOVEMBER 1 1993



SOUTH EAST CORNER, SECTION 27, 9/18.

CORNER - LEFT AS FOUND FOUND AND TAGGED REESTABLISHED OBLITERATED CORNER REBUILT
OR LOST

PHYSICAL DESCRIPTION OF CORNER FOUND; EVIDENCE AND METHOD USED TO IDENTIFY OR REESTABLISH

REESTABLISHED BY DOUBLE PROPORTION METHOD.

PHYSICAL DESCRIPTION OF MONUMENTS REBUILT OR PERPETUATED

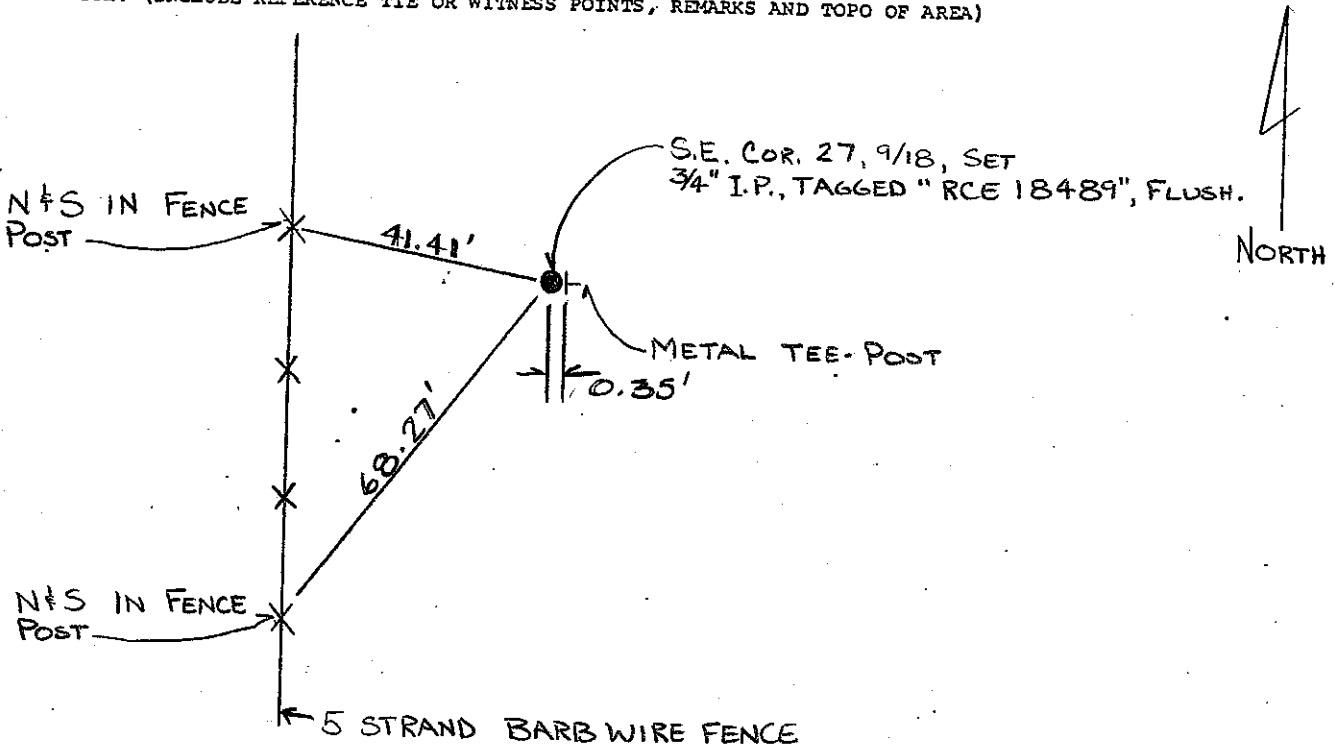
SET $\frac{3}{4}$ " IRON PIPE, TAGGED "RCE 18489", FLUSH, BY
 DOUBLE PROPORTION METHOD.

CALIFORNIA COORDINATE SYSTEM ORDER: FIRST SECOND THIRD

STATIONS USED: NGS (USC & GS) STATE COUNTY OTHER STATION _____ STATION _____

ZONE _____ ELEVATION _____ NORTHINGS (Y) _____ EASTINGS (X) _____

SKETCH: (INCLUDE REFERENCE TIE OR WITNESS POINTS, REMARKS AND TOPO OF AREA)

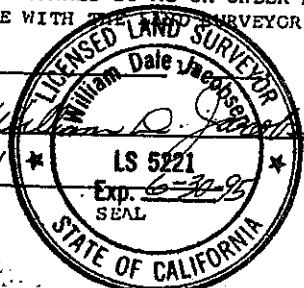


SURVEYOR'S CERTIFICATE

THIS CORNER RECORD WAS PREPARED BY ME OR UNDER MY DIRECTION IN CONFORMANCE WITH THE SURVEYOR'S ACT ON

SIGNED: William D. J. [Signature] DATE: 1/5/94

L.S. or R.C.E. No: 5221



COUNTY SURVEYOR'S CERTIFICATE

THE CORNER RECORD WAS RECEIVED 1/10 1994
 AND EXAMINED AND FILED 1/12 1994.

BY: [Signature]

TITLE: ENG. TECH.

DOCUMENT NO: 49211A
 STATEMENT ON BACK OF SHEET: YES NO