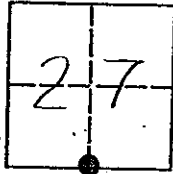


CORNER RECORD

COUNTY OF MADERA TOWNSHIP 9 SOUTH, RANGE 18 EAST, M.D.B.&M. CALIFORNIA

CORNER TYPE: GOV'T. CORNER MEANDER RANCHO CONTROL OTHER

CORNER IDENTIFICATION - DATE OF VISIT: NOVEMBER 1 19 93



SOUTH 1/4 CORNER, SECTION 27, 9/18.

CORNER - LEFT AS FOUND FOUND AND TAGGED REESTABLISHED OBLITERATED CORNER OR LOST REBUILT

PHYSICAL DESCRIPTION OF CORNER FOUND; EVIDENCE AND METHOD USED TO IDENTIFY OR REESTABLISH

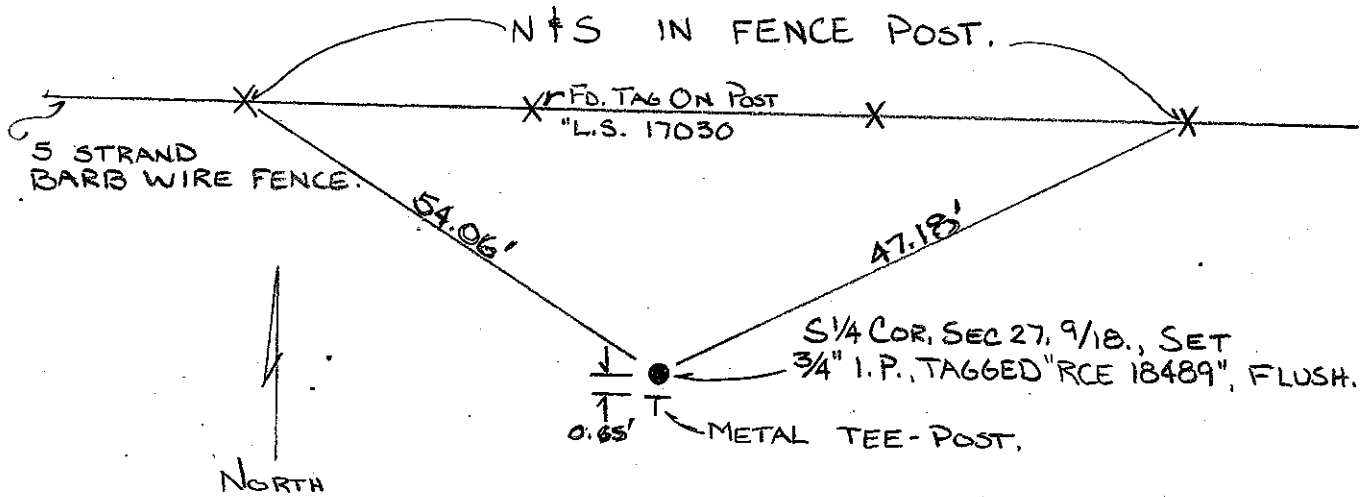
REESTABLISHED BY SINGLE PROPORTION METHOD

PHYSICAL DESCRIPTION OF MONUMENTS REBUILT OR PERPETUATED

SET 3/4" IRON PIPE, TAGGED "RCE 18489", FLUSH.

CALIFORNIA COORDINATE SYSTEM ORDER: FIRST SECOND THIRD STATIONS USED: NGS (USC & GS) STATE COUNTY OTHER STATION STATION ZONE ELEVATION NORTHINGS (Y) EASTINGS (X)

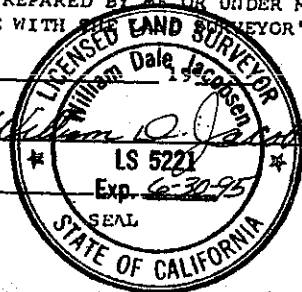
SKETCH: (INCLUDE REFERENCE TIE OR WITNESS POINTS, REMARKS AND TOPO OF AREA)



SURVEYOR'S CERTIFICATE

THIS CORNER RECORD WAS PREPARED BY ME OR UNDER MY DIRECTION IN CONFORMANCE WITH SURVEYOR'S ACT ON

SIGNED: 1/5/94



COUNTY SURVEYOR'S CERTIFICATE

THE CORNER RECORD WAS RECEIVED 1/10 19 94 AND EXAMINED AND FILED 1/12 19 94.

BY: K. Kelly

TITLE: ENG. TECH.

DOCUMENT No: 49211J STATEMENT ON BACK OF SHEET: YES NO

L.S. or R.C.E. No: 5221