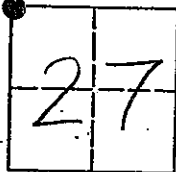


CORNER RECORD

COUNTY OF MADERA TOWNSHIP 9 SOUTH, RANGE 18 EAST, M.D.B.&M. CALIFORNIA

CORNER TYPE: GOV'T. CORNER MEANDER RANCHO CONTROL OTHER

CORNER IDENTIFICATION - DATE OF VISIT: NOVEMBER 1 1993



NORTH WEST CORNER, SECTION 27, 9/18.

CORNER - LEFT AS FOUND FOUND AND TAGGED REESTABLISHED OBLITERATED CORNER OR LOST REBUILT

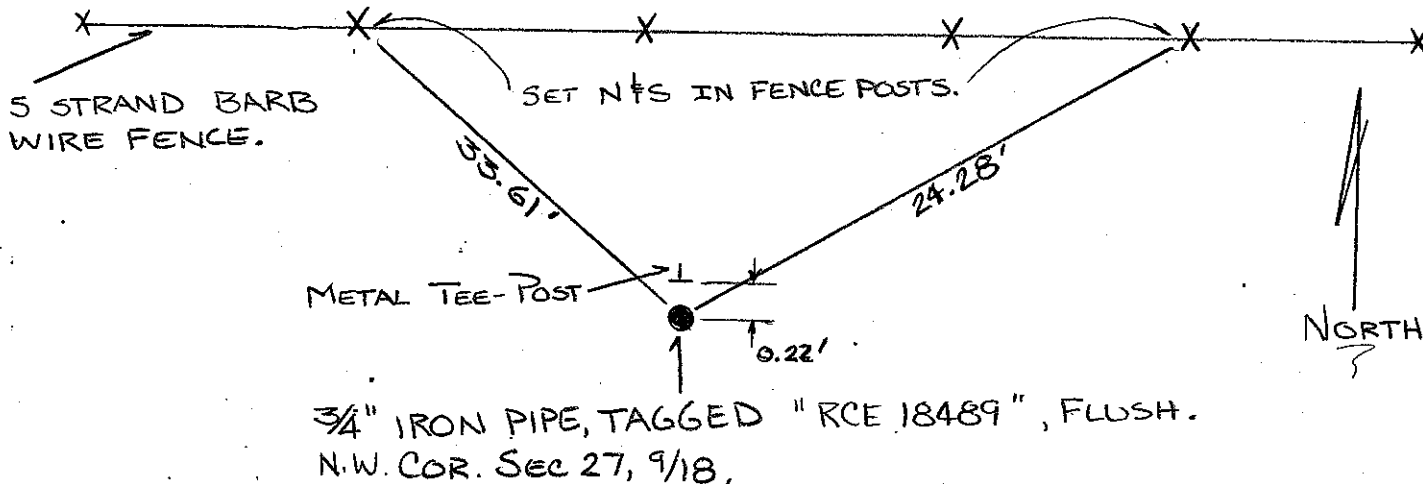
PHYSICAL DESCRIPTION OF CORNER FOUND; EVIDENCE AND METHOD USED TO IDENTIFY OR REESTABLISH
 REESTABLISHED BY DOUBLE PROPORTION METHOD.

PHYSICAL DESCRIPTION OF MONUMENTS REBUILT OR PERPETUATED

SET $\frac{3}{4}$ " IRON PIPE, TAGGED "RCE 18489", FLUSH. SET BY DOUBLE PROPORTION METHOD.

CALIFORNIA COORDINATE SYSTEM ORDER: FIRST SECOND THIRD
 STATIONS USED: NGS (USC & GS) STATE COUNTY OTHER STATION _____ STATION _____
 ZONE _____ ELEVATION _____ NORTHINGS (Y) _____ EASTINGS (X) _____

SKETCH: (INCLUDE REFERENCE TIE OR WITNESS POINTS, REMARKS AND TOPO OF AREA)

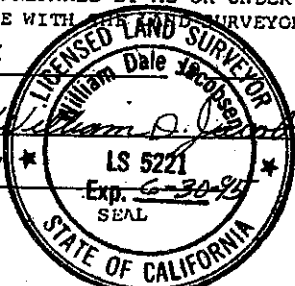


SURVEYOR'S CERTIFICATE

THIS CORNER RECORD WAS PREPARED BY ME OR UNDER MY DIRECTION IN CONFORMANCE WITH THE SURVEYOR'S ACT ON

1/5/94

SIGNED: _____



COUNTY SURVEYOR'S CERTIFICATE

THE CORNER RECORD WAS RECEIVED 1/10 1994
 AND EXAMINED AND FILED 1/12 1994.

BY: Kell

TITLE: EUG. TECH.

DOCUMENT No: 492116
 STATEMENT ON BACK OF SHEET: YES NO

L.S. or R.C.E. No: 5221