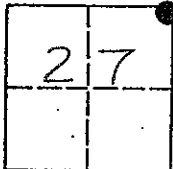


CORNER RECORD

COUNTY OF MADERA TOWNSHIP 9 SOUTH, RANGE 18 EAST, M.D.B.&M. CALIFORNIA

CORNER TYPE: GOV'T. CORNER MEANDER RANCHO CONTROL OTHER

CORNER IDENTIFICATION - DATE OF VISIT: NOVEMBER 24 19 93



NORTH EAST CORNER, SECTION 27, 9/18.

CORNER - LEFT AS FOUND FOUND AND TAGGED REESTABLISHED OBLITERATED CORNER REBUILT

PHYSICAL DESCRIPTION OF CORNER FOUND; EVIDENCE AND METHOD USED TO IDENTIFY OR REESTABLISH

FOUND RAIL ROAD TIE IN 4' DIAMETER CONCRETE INSCRIBED "DAULTON 1916, SAXE, HAYER 1916, HAYER"

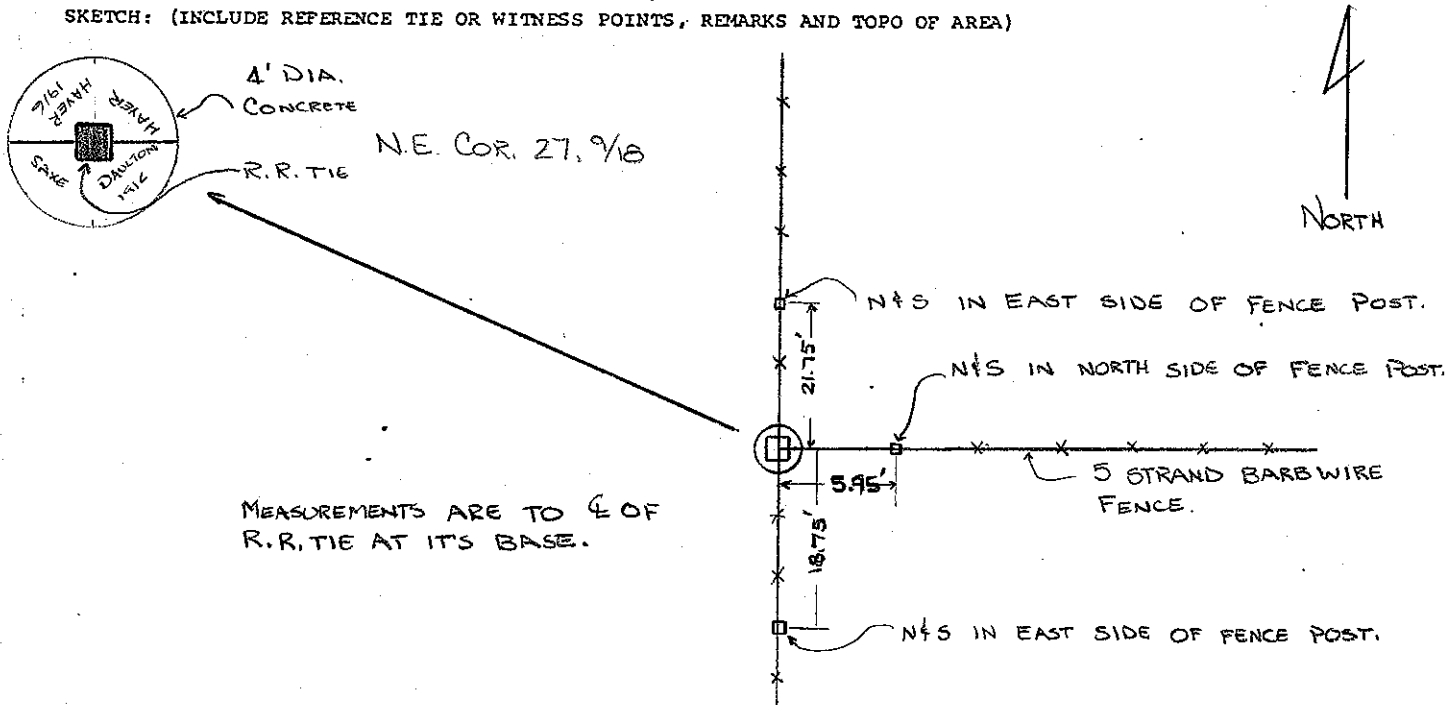
PHYSICAL DESCRIPTION OF MONUMENTS REBUILT OR PERPETUATED

CALIFORNIA COORDINATE SYSTEM ORDER: FIRST SECOND THIRD

STATIONS USED: NGS (USC & GS) STATE COUNTY OTHER STATION _____ STATION _____

ZONE _____ ELEVATION _____ NORTHINGS (Y) _____ EASTINGS (X) _____

SKETCH: (INCLUDE REFERENCE TIE OR WITNESS POINTS, REMARKS AND TOPO OF AREA)

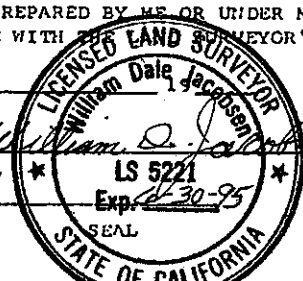


SURVEYOR'S CERTIFICATE

THIS CORNER RECORD WAS PREPARED BY ME OR UNDER MY DIRECTION IN CONFORMANCE WITH THE SURVEYOR'S ACT ON

1/5/94
SIGNED: William D. Joseph

L.S. OF R.C.E. No: 5221



COUNTY SURVEYOR'S CERTIFICATE

THE CORNER RECORD WAS RECEIVED 1/10 19 94
AND EXAMINED AND FILED 1/12 19 94.

BY: Kell

TITLE: ENG. TECH.

DOCUMENT No: 49211E
STATEMENT ON BACK OF SHEET: YES NO