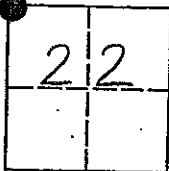


CORNER RECORD

COUNTY OF MADERA TOWNSHIP 9 SOUTH, RANGE 18 EAST, M.D.B.&M. CALIFORNIA

CORNER TYPE: GOV'T. CORNER MEANDER RANCHO CONTROL OTHER

CORNER IDENTIFICATION - DATE OF VISIT: NOVEMBER 24 1993



NORTH WEST CORNER, SECTION 22, 9/18.

CORNER - LEFT AS FOUND FOUND AND TAGGED REESTABLISHED OBLITERATED CORNER REBUILT

PHYSICAL DESCRIPTION OF CORNER FOUND; EVIDENCE AND METHOD USED TO IDENTIFY OR REESTABLISH

FOUND OLD 4"x4" REDWOOD, UP 17", IN ROCK MOUND.

PHYSICAL DESCRIPTION OF MONUMENTS REBUILT OR PERPETUATED

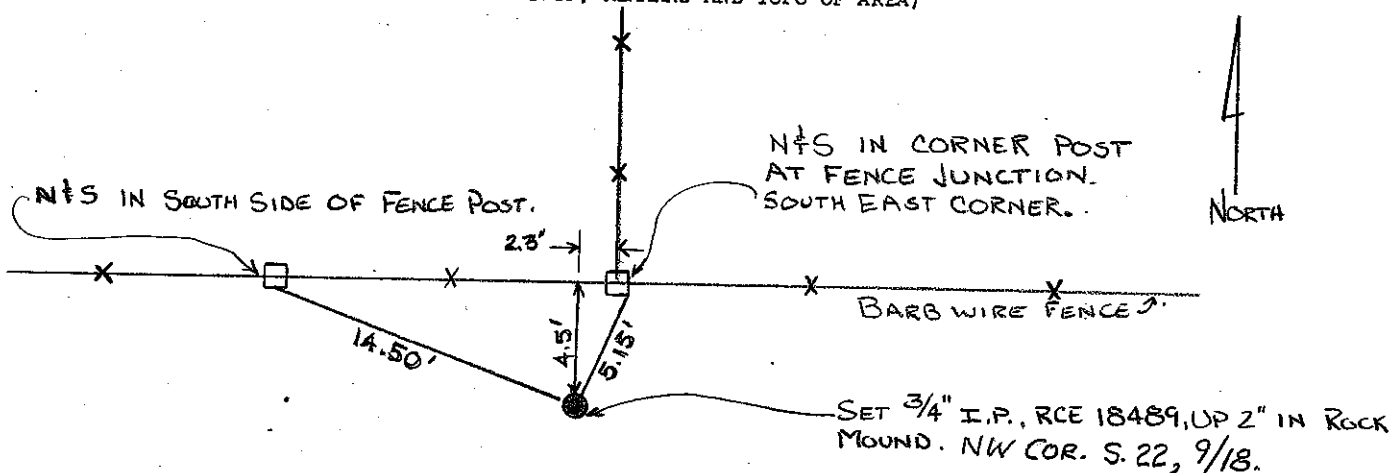
SET 3/4" IRON PIPE, TAGGED "RCE 18489", UP 2" WITH NEW ROCK MOUND.

CALIFORNIA COORDINATE SYSTEM ORDER: FIRST SECOND THIRD

STATIONS USED: NGS (USC & GS) STATE COUNTY OTHER STATION _____ STATION _____

ZONE _____ ELEVATION _____ NORTHINGS (Y) _____ EASTINGS (X) _____

SKETCH: (INCLUDE REFERENCE TIE OR WITNESS POINTS, REMARKS AND TOPO OF AREA)

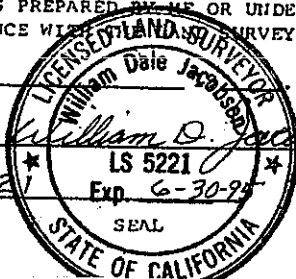


SURVEYOR'S CERTIFICATE

THIS CORNER RECORD WAS PREPARED BY ME OR UNDER MY DIRECTION IN CONFORMANCE WITH THE SURVEYOR'S ACT ON

1/5/94

SIGNED:



L.S. or R.C.E. No: 5221

COUNTY SURVEYOR'S CERTIFICATE

THE CORNER RECORD WAS RECEIVED 1/10 1994

AND EXAMINED AND FILED 1/12 1994.

BY: K. Keel

TITLE: ENG. TECH.

DOCUMENT No: 492113

STATEMENT ON BACK OF SHEET: YES NO