

CORNER RECORD

COUNTY OF MADISA T. 9 R. 17 M.D.B. & MERIDIAN CALIFORNIA
 CORNER TYPE: GOVT. CORNER MEANDER RANCHO CONTROL OTHER
 CORNER IDENTIFICATION -- DATE OF VISIT 8-19 1983



CORNER -- LEFT AS FOUND FOUND AND TAGGED REESTABLISHED OBLITERATED CORNER REBUILT

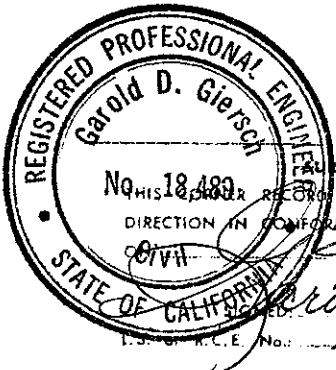
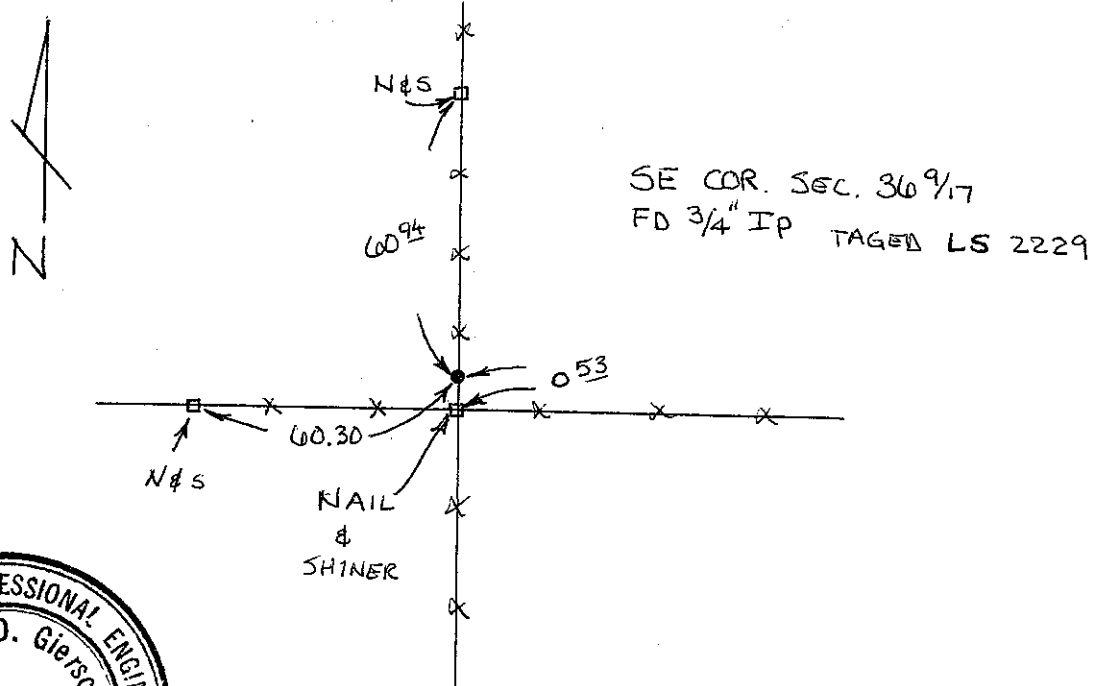
PHYSICAL DESCRIPTION OF CORNER FOUND; EVIDENCE AND METHOD USED TO IDENTIFY OR REESTABLISH

SE COR SEC 36 9/17
FD 3/4" IP LS 2229

PHYSICAL DESCRIPTION OF MONUMENTS REBUILT OR PERPETUATED

CALIFORNIA COORDINATE SYSTEM ORDER: FIRST SECOND THIRD
 STATIONS USED: NGS (USC & GS) STATE COUNTY OTHER STATION _____ STATION _____
 ZONE _____ ELEVATION _____ NORTHINGS (Y) _____ EASTINGS (X) _____

SKETCH: (Include reference tie or witness points, remarks and topo of area)



REGISTERED PROFESSIONAL ENGINEER
Garold D. Gierisch
 No. 18489
 THIS CORNER RECORD WAS PREPARED BY ME OR UNDER MY DIRECTION IN CONFORMANCE WITH THE LAND SURVEYORS ACT
 CIVIL
 8/22 1983
 Garold D. Gierisch
 P.E. No. 18489

SEAL

COUNTY SURVEYOR'S CERTIFICATE
 THE CORNER RECORD WAS RECEIVED _____ 19____
 AND EXAMINED AND FILED _____ 19____
 BY _____
 TITLE: _____
 DOCUMENT No. _____
 STATEMENT ON BACK OF SHEET YES NO