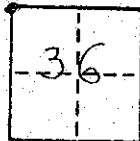


CORNER RECORD

COUNTY OF MADERA T. 9 S. R. 17 E. M.D. M.D. MERIDIAN CALIFORNIA

CORNER TYPE: GOVT. CORNER MEANDER RANCHO CONTROL OTHER

CORNER IDENTIFICATION — DATE OF VISIT 6-17 19 74



CORNER — LEFT AS FOUND FOUND AND TAGGED REESTABLISHED OBLITERATED CORNER RESULT

PHYSICAL DESCRIPTION OF CORNER FOUND; EVIDENCE AND METHOD USED TO IDENTIFY OR REESTABLISH

FND 3/4" I.P.

RECORD OF SURVEY J.A. ROSS CIVIL ENGINEER
BOOK 14 P. 123, 124 & 125 MADERA COUNTY RECORDS

PHYSICAL DESCRIPTION OF MONUMENTS REBUILT OR PERPETUATED

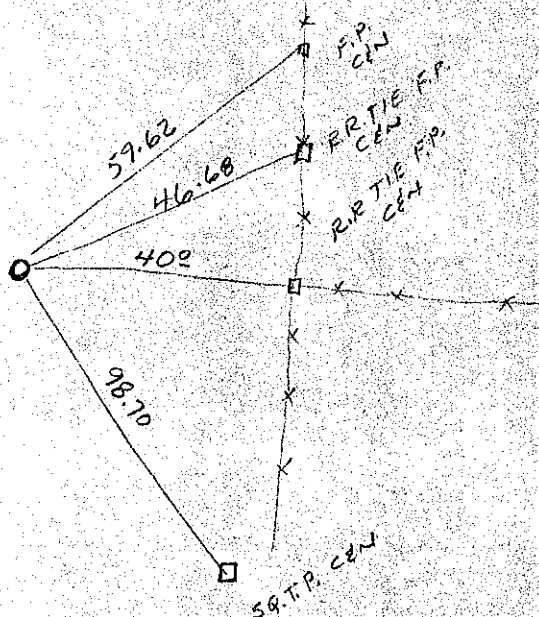
SET SEAL RCE 7442 IN CONIC PLUG IN EXISTING I.P.

CALIFORNIA COORDINATE SYSTEM ORDER: FIRST SECOND THIRD

STATIONS USED: NGS (USC & GS) STATE COUNTY OTHER STATION _____ STATION _____

ZONE _____ ELEVATION _____ NORTHINGS (Y) _____ EASTINGS (X) _____

SKETCH: (Include reference tie or witness points, remarks and topo of area)



SURVEYOR'S CERTIFICATE

THIS CORNER RECORD WAS PREPARED BY ME OR UNDER MY DIRECTION IN CONFORMANCE WITH THE LAND SURVEYORS ACT ON 10-9 19 74

SIGNED: [Signature]

R.C.E. No.: 7442

SEAL

COUNTY SURVEYOR'S CERTIFICATE

THE CORNER RECORD WAS RECEIVED Oct 10 19 74 AND EXAMINED AND FILED Oct 11 19 74

BY: [Signature]

TITLE: County Engineer

DOCUMENT No. 74-20-6

STATEMENT ON BACK OF SHEET

YES NO