

CORNER RECORD

COUNTY OF MADERA T. 9 S. R. 17 E. M.D.B & MERIDIAN CALIFORNIA
 CORNER TYPE: GOV'T. CORNER MEANDER RANCHO CONTROL OTHER
 CORNER IDENTIFICATION — DATE OF VISIT Oct 22 1987



NE COR SEC. 31, T. 9 S., R. 17 E.

CORNER — LEFT AS FOUND FOUND AND TAGGED REESTABLISHED OBLITERATED CORNER REBUILT

PHYSICAL DESCRIPTION OF CORNER FOUND; EVIDENCE AND METHOD USED TO IDENTIFY OR REESTABLISH.

FOUND 3/4" IRON PIPE, DOWN 6"

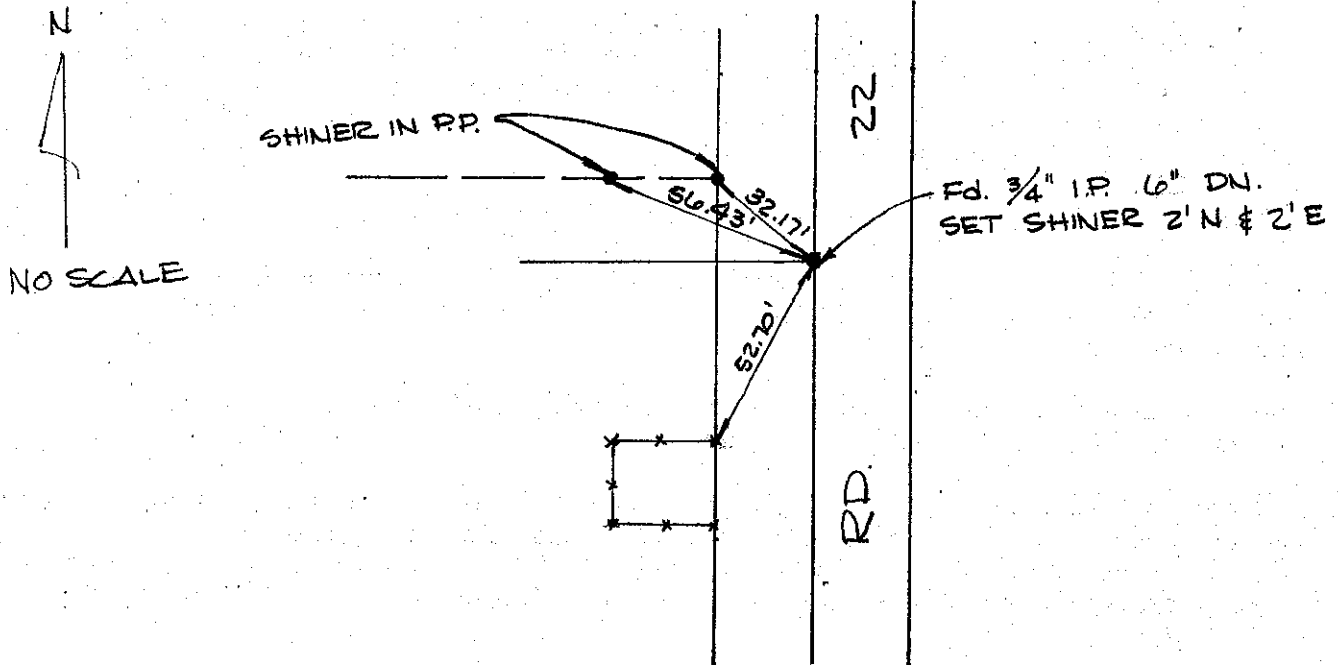
PHYSICAL DESCRIPTION OF MONUMENTS REBUILT OR PERPETUATED

SET TAG RCE 30501

CALIFORNIA COORDINATE SYSTEM ORDER: FIRST SECOND THIRD
 STATIONS USED: NGS (USC & GS) STATE COUNTY OTHER STATION _____ STATION _____
 ZONE _____ ELEVATION _____ NORTHINGS (Y) _____ EASTINGS (X) _____

(Fold)

SKETCH: (Include reference tie or witness points, remarks and topo of area)

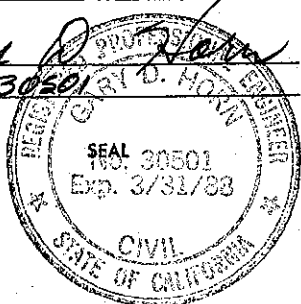


SURVEYOR'S CERTIFICATE

THIS CORNER RECORD WAS PREPARED BY ME OR UNDER MY DIRECTION IN CONFORMANCE WITH THE LAND SURVEYORS ACT ON December 21 1987

SIGNED: Gary P. [Signature]

L.S. or R.C.E. No.: RCE 30501



COUNTY SURVEYOR'S CERTIFICATE

THE CORNER RECORD WAS RECEIVED _____ 19 _____

AND EXAMINED AND FILED _____ 19 _____

BY: _____

TITLE: _____

DOCUMENT No. _____

STATEMENT ON BACK OF SHEET

YES NO