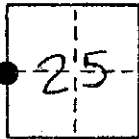


CORNER RECORD

COUNTY OF MADISA T. 9 R. 17 MDB & MERIDIAN CALIFORNIA
 CORNER TYPE: GOV'T. CORNER MEANDER RANCHO CONTROL OTHER
 CORNER IDENTIFICATION — DATE OF VISIT 10-23 1985



W 1/4 25 9/17

CORNER — LEFT AS FOUND FOUND AND TAGGED REESTABLISHED OBLITERATED CORNER REBUILT

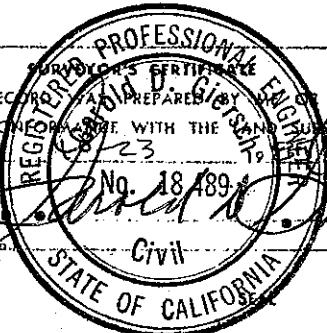
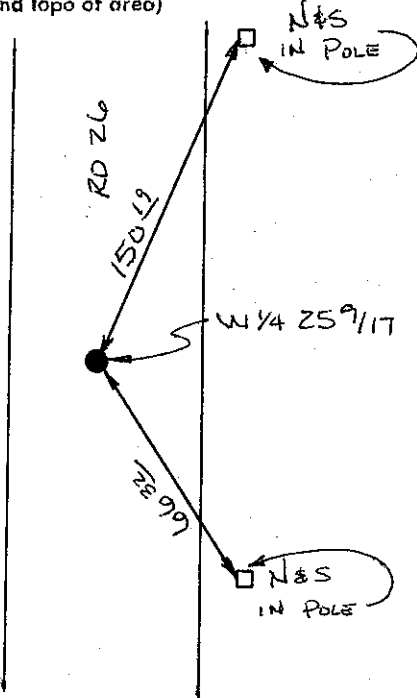
PHYSICAL DESCRIPTION OF CORNER FOUND; EVIDENCE AND METHOD USED TO IDENTIFY OR REESTABLISH

PHYSICAL DESCRIPTION OF MONUMENTS REBUILT OR PERPETUATED

SET 3/4" IP, R.C.E. 18489

CALIFORNIA COORDINATE SYSTEM ORDER: FIRST SECOND THIRD
 STATIONS USED: NGS (USC & GS) STATE COUNTY OTHER STATION _____ STATION _____
 ZONE _____ ELEVATION _____ NORTHINGS (Y) _____ EASTINGS (X) _____

SKETCH: (Include reference tie or witness points, remarks and topo of area)



THIS CORNER RECORD WAS PREPARED BY GUY V. GIBBY UNDER MY
 DIRECTION IN CONFORMANCE WITH THE SURVEYORS ACT
 ON 10/23 1985
 SIGNATURE [Signature]
 L.S. or R.C.E. No. 18489

COUNTY SURVEYOR'S CERTIFICATE
 THE CORNER RECORD WAS RECEIVED 10/23 1985
 AND EXAMINED AND FILED BY [Signature]
 TITLE: _____

DOCUMENT No. _____
 STATEMENT ON BACK OF SHEET

YES NO