

CORNER RECORD

COUNTY OF MADERA T. 9 S. R. 17 E. M.D. Meridian CALIFORNIA
 CORNER TYPE: GOVT. CORNER MEANDER RANCHO CONTROL OTHER
 CORNER IDENTIFICATION — DATE OF VISIT 6-17 19 74



CORNER — LEFT AS FOUND FOUND AND TAGGED REESTABLISHED OBLITERATED CORNER REBUILT

PHYSICAL DESCRIPTION OF CORNER FOUND; EVIDENCE AND METHOD USED TO IDENTIFY OR REESTABLISH

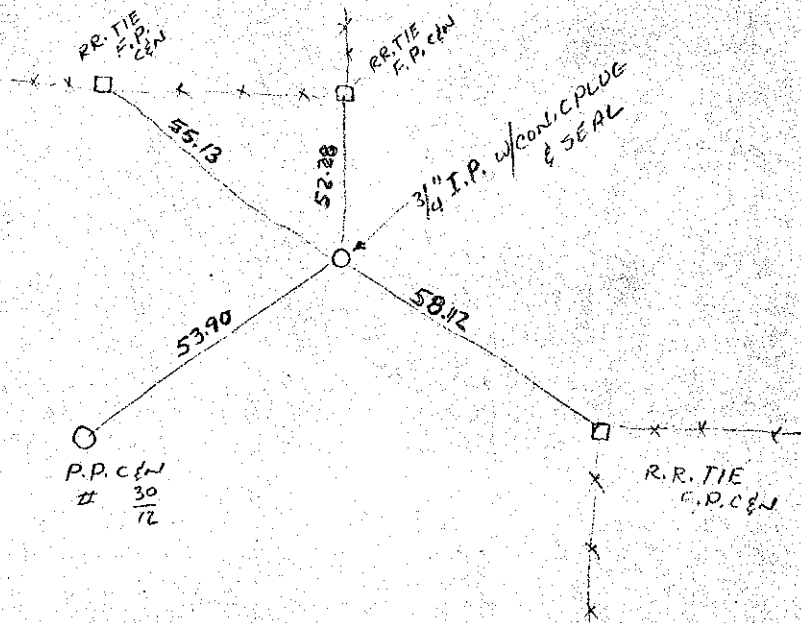
FND. 3/4 I.P.

PHYSICAL DESCRIPTION OF MONUMENTS REBUILT OR PERPETUATED

SET CONIC PLUG & SEAL R.C.E. 7442

CALIFORNIA COORDINATE SYSTEM ORDER: FIRST SECOND THIRD
 STATIONS USED: NGS (USC & GS) STATE COUNTY OTHER STATION _____ STATION _____
 ZONE _____ ELEVATION _____ NORTHINGS (Y) _____ EASTINGS (X) _____

SKETCH: (Include reference tie or witness points, remarks and topo of area)



SURVEYOR'S CERTIFICATE

THIS CORNER RECORD WAS PREPARED BY ME OR UNDER MY DIRECTION IN CONFORMANCE WITH THE LAND SURVEYORS ACT ON 10-9 19 74

SIGNED: [Signature]
 R.C.E. No.: 7442

SEAL

COUNTY SURVEYOR'S CERTIFICATE

THE CORNER RECORD WAS RECEIVED Oct. 10 19 74 AND EXAMINED AND FILED Oct. 11 19 74

BY: Albert O. [Signature]
 TITLE: County Engineer

DOCUMENT No. 74-20-10

STATEMENT ON BACK OF SHEET

YES NO