

# CORNER RECORD

COUNTY OF MADISON T. 9 R. 17 MERIDIAN CALIFORNIA  
 CORNER TYPE: GOV'T. CORNER  MEANDER  RANCHO  CONTROL  OTHER   
 CORNER IDENTIFICATION — DATE OF VISIT 10-23 19 25



N<sup>1</sup>/<sub>4</sub> 25<sup>9</sup>/17

CORNER — LEFT AS FOUND  FOUND AND TAGGED  REESTABLISHED OBLITERATED CORNER  REBUILT

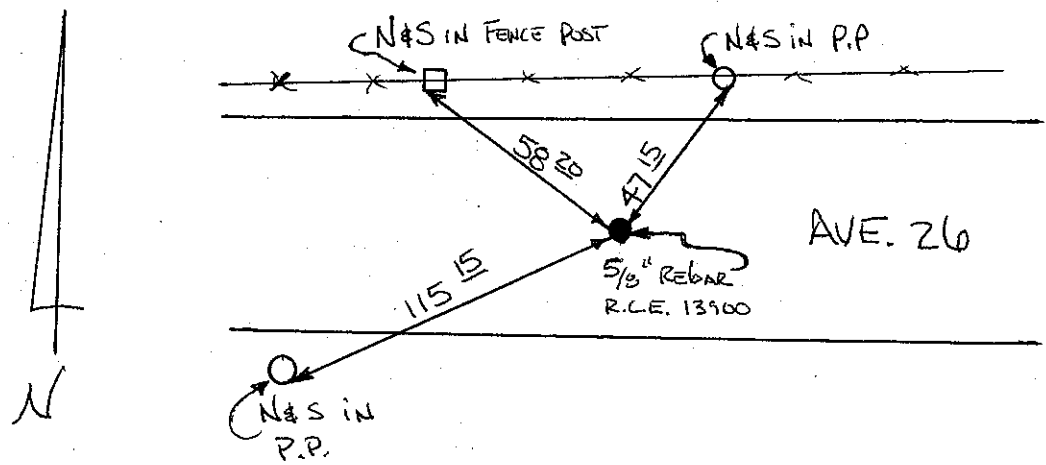
PHYSICAL DESCRIPTION OF CORNER FOUND; EVIDENCE AND METHOD USED TO IDENTIFY OR REESTABLISH

FD 5/8" REBAR, R.C.E. 13900

PHYSICAL DESCRIPTION OF MONUMENTS REBUILT OR PERPETUATED

CALIFORNIA COORDINATE SYSTEM ORDER: FIRST  SECOND  THIRD   
 STATIONS USED: NGS (USC & GS)  STATE  COUNTY  OTHER  STATION \_\_\_\_\_ STATION \_\_\_\_\_  
 ZONE \_\_\_\_\_ ELEVATION \_\_\_\_\_ NORTHINGS (Y) \_\_\_\_\_ EASTINGS (X) \_\_\_\_\_

SKETCH: (Include reference tie or witness points, remarks and topo of area)



SURVEYOR'S CERTIFICATE  
 THIS CORNER RECORD WAS RECEIVED BY G.P. [Signature] UNDER MY  
 DIRECTION IN CONFORMANCE WITH THE LAND SURVEYORS ACT  
 ON 10-23 19 25  
 SIGNED: [Signature]  
 I.S. or R.C.E. No. 18180



COUNTY SURVEYOR'S CERTIFICATE  
 THE CORNER RECORD WAS RECEIVED 10/23/1925  
 AND EXAMINED AND FILED 11/19/1925  
 BY [Signature]  
 TITLE: \_\_\_\_\_

DOCUMENT No. \_\_\_\_\_  
 STATEMENT ON BACK OF SHEET  
 YES  NO