

# CORNER RECORD

COUNTY OF Madera T. 9 S R. 17 E MD B & MERIDIAN CALIFORNIA

CORNER TYPE: GOV'T. CORNER  MEANDER  RANCHO  CONTROL  OTHER

CORNER IDENTIFICATION -- DATE OF VISIT Apr 16 1975



CORNER -- LEFT AS FOUND  FOUND AND TAGGED  REESTABLISHED OBLITERATED CORNER  REBUILT

PHYSICAL DESCRIPTION OF CORNER FOUND; EVIDENCE AND METHOD USED TO IDENTIFY OR REESTABLISH

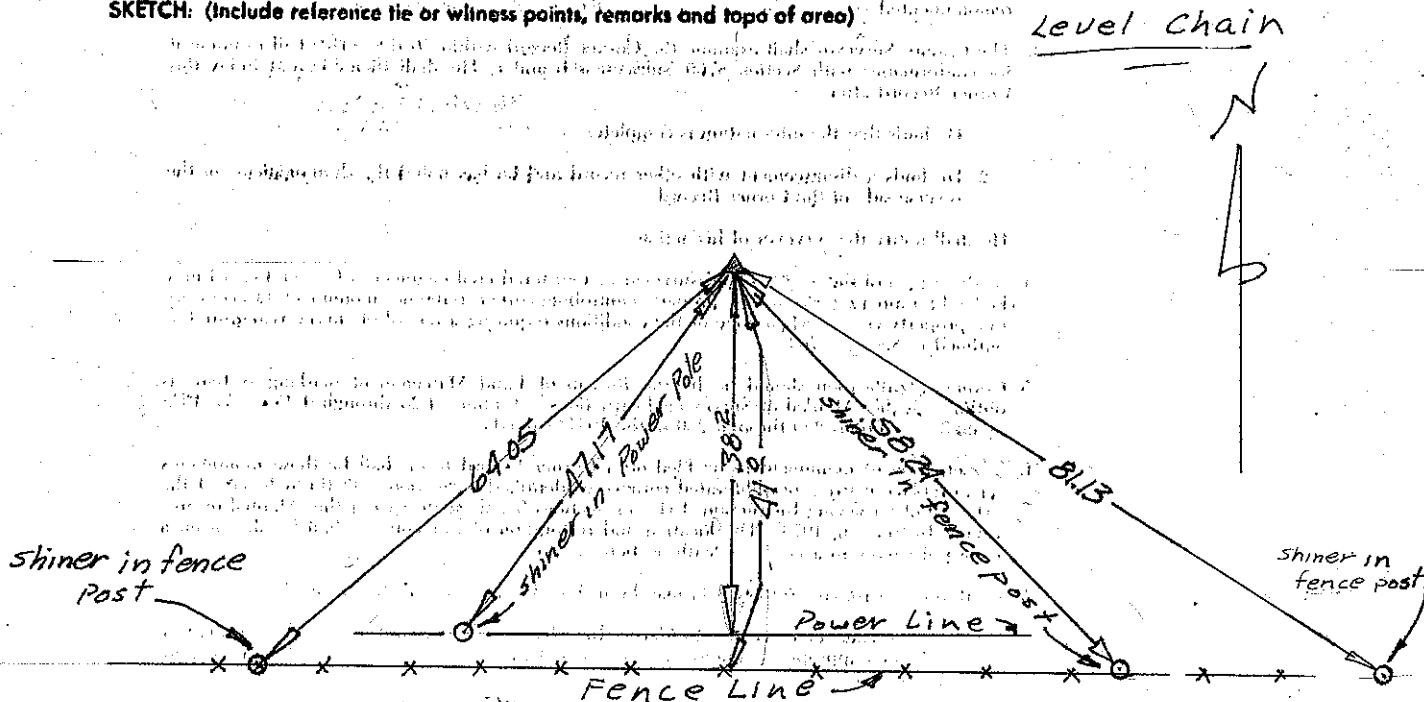
Fd. Large Nail 6" dn 40' S of 3/4" IP RCE 9767

PHYSICAL DESCRIPTION OF MONUMENTS REBUILT OR PERPETUATED

Reset #4 (1/2") Rebar, RCE 139'00, 4" dn. from County Road Dept. Ties.

CALIFORNIA COORDINATE SYSTEM ORDER: FIRST  SECOND  THIRD   
 STATIONS USED: NGS (USC & GS)  STATE  COUNTY  OTHER  STATION \_\_\_\_\_ STATION \_\_\_\_\_  
 ZONE \_\_\_\_\_ ELEVATION \_\_\_\_\_ NORTHINGS (Y) \_\_\_\_\_ EASTINGS (X) \_\_\_\_\_

SKETCH: (Include reference tie or witness points, remarks and topo of area)

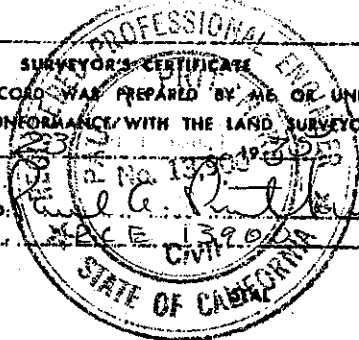


**SURVEYOR'S CERTIFICATE**

THIS CORNER RECORD WAS PREPARED BY ME OR UNDER MY DIRECTION IN CONFORMANCE WITH THE LAND SURVEYORS ACT ON April 23 1975

SIGNED: [Signature]

I.S. or R.C.E. No. RCE 139'00



**COUNTY SURVEYOR'S CERTIFICATE**

THE CORNER RECORD WAS RECEIVED 5-1 1975 AND EXAMINED AND FILED May 6 1975

BY: A.O. Lute

TITLE: County Engineer

DOCUMENT No. 75-17-01

STATEMENT ON BACK OF SHEET

YES  NO