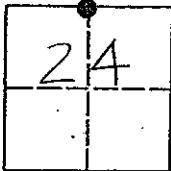


# CORNER RECORD

COUNTY OF MADERA    TOWNSHIP 9    SOUTH,    RANGE 17    EAST, M.D.B.&M.    CALIFORNIA

CORNER TYPE:    GOV'T. CORNER     MEANDER     RANCHO     CONTROL     OTHER

CORNER IDENTIFICATION - DATE OF VISIT: 5-20 19 93



N 1/4 COR. SEC. 24, 9/17.

CORNER - LEFT AS FOUND     FOUND AND TAGGED     REESTABLISHED OBLITERATED CORNER     REBUILT

PHYSICAL DESCRIPTION OF CORNER FOUND; EVIDENCE AND METHOD USED TO IDENTIFY OR REESTABLISH

REESTABLISHED N 1/4 COR. SEC. 24, 9/17 BY  
SINGLE PROPORTIONAL MEASUREMENT FROM  
THE ADJACENT SECTION CORNERS.    (REF: P.M. # 3221)

PHYSICAL DESCRIPTION OF MONUMENTS REBUILT OR PERPETUATED

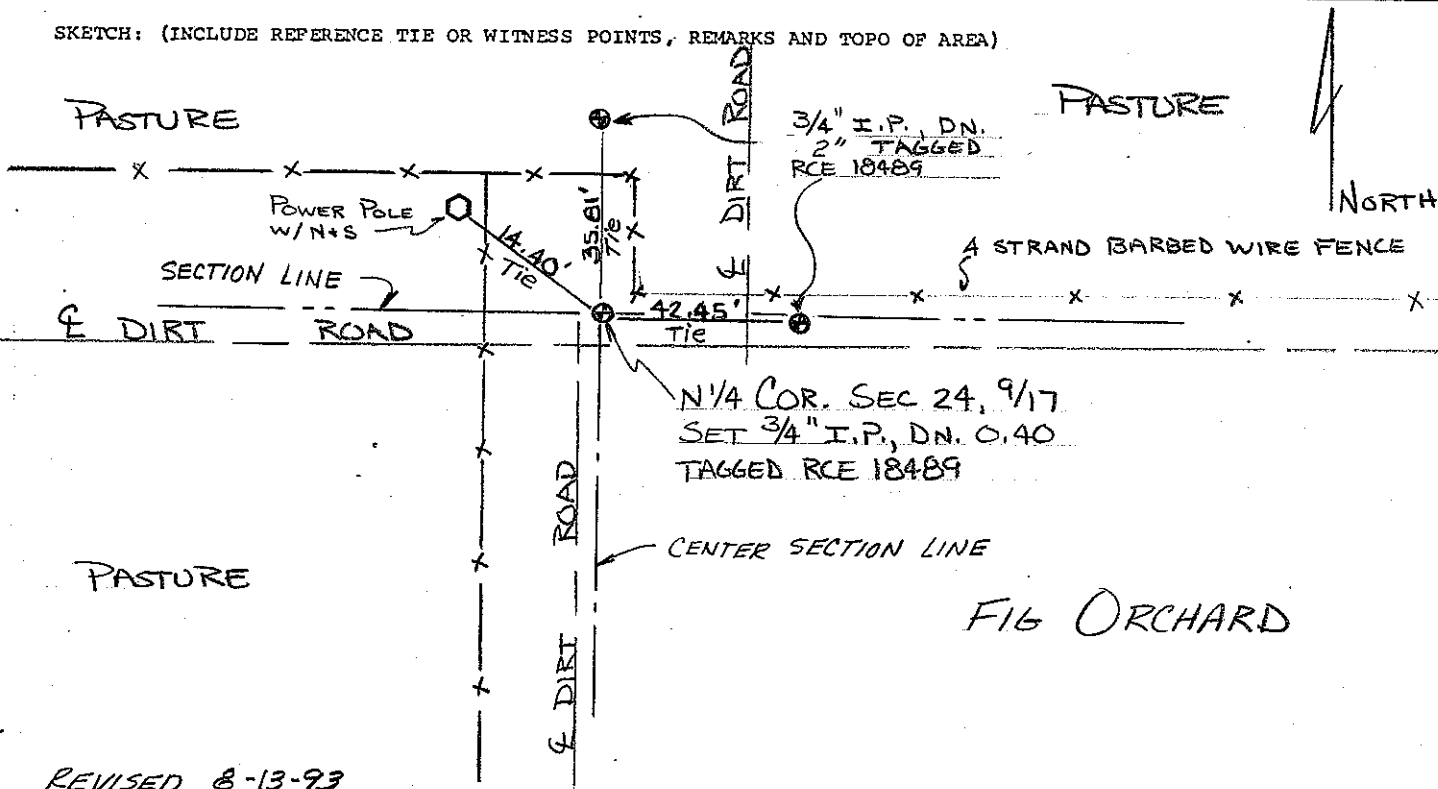
SET 3/4" I.P.; 24" LONG, DN 5", TAGGED  
"RCE 18489".

CALIFORNIA COORDINATE SYSTEM ORDER:    FIRST     SECOND     THIRD

STATIONS USED:    NGS (USC & GS)     STATE     COUNTY     OTHER     STATION \_\_\_\_\_ STATION \_\_\_\_\_

ZONE \_\_\_\_\_ ELEVATION \_\_\_\_\_ NORTHINGS (Y) \_\_\_\_\_ EASTINGS (X) \_\_\_\_\_

SKETCH: (INCLUDE REFERENCE TIE OR WITNESS POINTS, REMARKS AND TOPO OF AREA)



REVISED 8-13-93

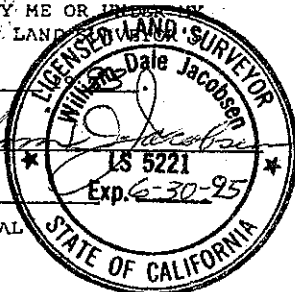
### SURVEYOR'S CERTIFICATE

THIS CORNER RECORD WAS PREPARED BY ME OR UNDER MY DIRECTION IN CONFORMANCE WITH THE LAND SURVEYING ACT ON

SIGNED: Aug. 13,

SIGNED: \_\_\_\_\_

(L.S.) or R.C.E. No: 5221



### COUNTY SURVEYOR'S CERTIFICATE

THE CORNER RECORD WAS RECEIVED \_\_\_\_\_ 19 \_\_\_\_\_  
AND EXAMINED AND FILED 8-23 19 93.

BY: Kell

TITLE: ENG. TECH.

DOCUMENT No: \_\_\_\_\_  
STATEMENT ON BACK OF SHEET:    YES     NO