

CORNER RECORD

COUNTY OF MADEIRA T. 9 S. R. 17 E. M.D.B. MERIDIAN CALIFORNIA

CORNER TYPE: GOV'T. CORNER MEANDER RANCHO CONTROL OTHER

CORNER IDENTIFICATION - DATE OF VISIT MAY 22 1992



N 1/4 COR. SEC. 24, 9/17

CORNER - LEFT AS FOUND FOUND AND TAGGED REESTABLISHED OBLITERATED CORNER RESULT

PHYSICAL DESCRIPTION OF CORNER FOUND; EVIDENCE AND METHOD USED TO IDENTIFY OR REESTABLISH

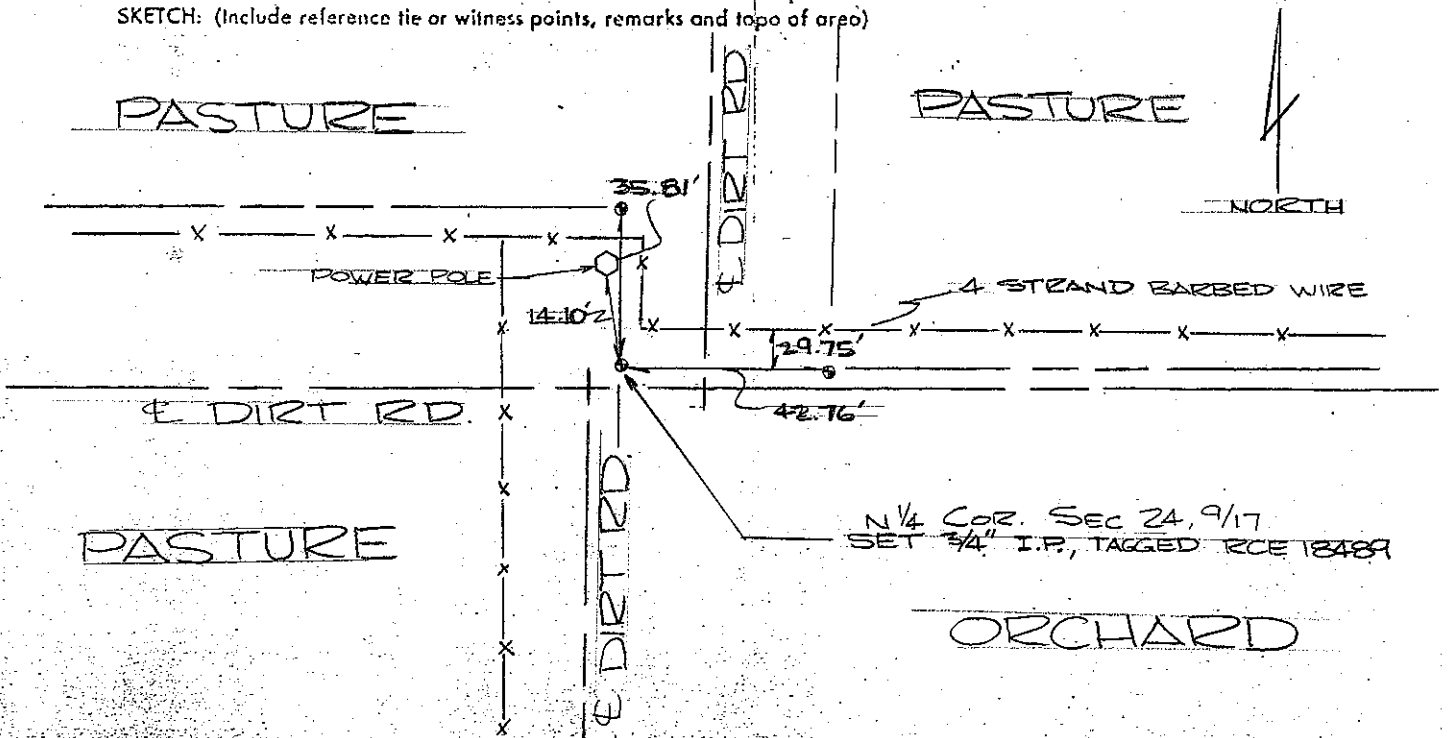
REESTABLISHED N 1/4 COR. SEC. 24, 9/17 BY SINGLE PROPORTIONAL MEASUREMENT FROM THE ADJACENT SECTION CORNERS. (REF. PM #3221)

PHYSICAL DESCRIPTION OF MONUMENTS REBUILT OR PERPETUATED

SET 3/4" I.P.; 24" LONG. DN 0.20', TAGGED "RCE 18489"

CALIFORNIA COORDINATE SYSTEM ORDER: FIRST SECOND THIRD
 STATIONS USED: NGS (USC & GS) STATE COUNTY OTHER STATION _____ STATION _____
 ZONE _____ ELEVATION _____ NORTHINGS (Y) _____ EASTINGS (X) _____

SKETCH: (Include reference tie or witness points, remarks and topo of arpo)



SURVEYOR'S CERTIFICATE

THIS CORNER RECORD WAS PREPARED BY William D. Jacobsen UNDER MY DIRECTION IN CONFORMANCE WITH THE SURVEYING ACT OF 1907 ON July

SIGNED: William D. Jacobsen

L.S. or R.C.E. No. 5221



COUNTY SURVEYOR'S CERTIFICATE

THE CORNER RECORD WAS RECEIVED _____ 19____ AND EXAMINED AND FILED 7-6 pp. 92

BY: Grove Shuman
 TITLE: Co. Eng.

DOCUMENT No. _____

STATEMENT ON BACK OF SHEET

YES NO